



**California State  
University**

---

C H A N N E L  
I S L A N D S




# Student Housing- Living On Campus



Housing Application

Priority Deadline- **June 1st**

**200+**  
EVENTS A YEAR  
IN HOUSING

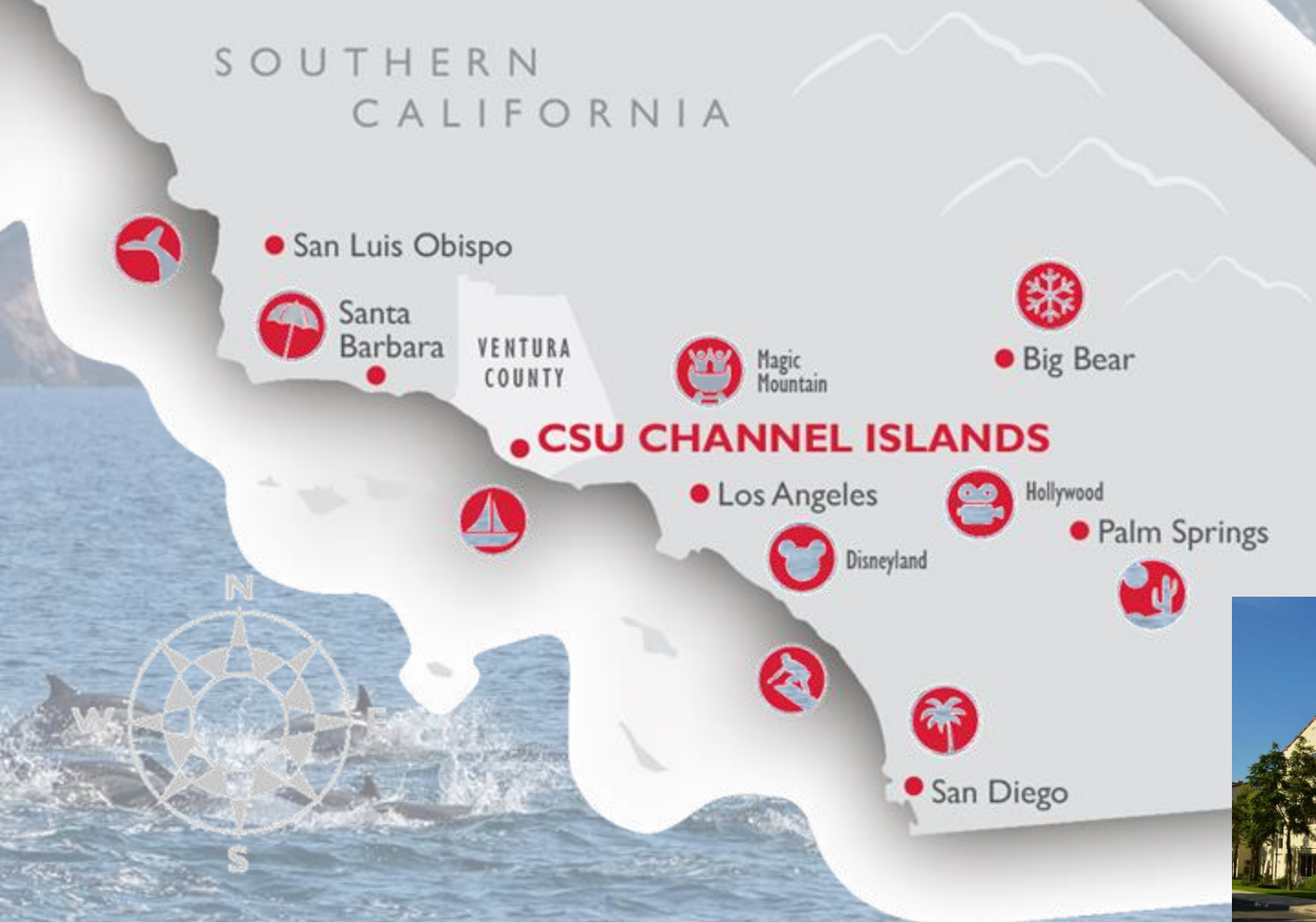
**1,350**   
STUDENTS LIVE  
ON CAMPUS

**80+**  
JOBS IN  
HOUSING

[go.csuci.edu/Housing](https://go.csuci.edu/Housing)

# Why live in Housing?

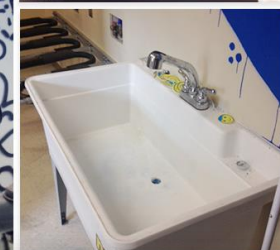
## Location, location, location!





# Why live in Housing?

- Better campus acclimation
- Academic Success- closer proximity to classes, academic support, access to staff/faculty
- Personal development- new ideas and cultures, interpersonal and communication skills
- Sense of community & Involvement
- More holistic educational experience.



## So many amenities!

- Surfboard Room
- Free printing
- Outdoor BBQ
- Presentation Room
- Maintenance support
- Dolphlix media streaming
- Recreation spaces: Game Rooms, Art Rooms, Relaxation Room, Fitness Room, Music Rooms, & more!



# Why live in Housing?

- **LONNIE!**
  - Our Housing & Residential Education Facility Dog
    - 1 of 2 campus dogs
  - Lonnie is available for residents to hang out with or check out for walks through the Certified Lonnie Walkers Program

Come visit me in Aliso Plaza by the Housing Tours.



## Lonnie's Schedule

MON	TUE	WED	THU	FRI
SANTA ROSA VILLAGE	SANTA CRUZ VILLAGE	ANACAPA VILLAGE	TOWN * CENTER OFFICE	SANTA ROSA VILLAGE

**Lonnie's Office Hours**

9 a.m. - 9:30 a.m.: Certified Lonnie Walk \*\*  
9:30 a.m. - 12 p.m.: Lonnie's Office Hours  
12 p.m. - 12:30 p.m.: CLW \*\*  
12:30 p.m. - 3 p.m.: Lonnie's Office Hours  
3 p.m. - 3:30 p.m.: CLW \*\*  
3:30 p.m. - 4:30 p.m.: Lonnie's Office Hours

**Come visit any time!**

\* Lonnie arrives by 10:30 a.m. to Town Center on Thursdays  
\*\* Certified Lonnie Walk (CLW): Certified Lonnie Walkers can check him out for a walk

EXAMPLE OF 2021-2022 Lonnie Rotation



# Get Connected in Your Community



**Theme Communities (TC):** students with common interests engage in extra-curricular activities aligned with a [CSUCI Mission Pillar](#) without course requirements. Students living on campus who engage in a TC will be housed together.

- **Freshmen TC:**

- **Geek Life:** built around Gaming, Animation, Digital Adventures, and all things "geek chic". Potential activities include panels, CI Con, gaming tournaments, floor art show, or a group trip to a local comic con.
- **Outdoor Adventures:** Students with common interests engage in extra-curricular activities without an intentional academic focus. Outdoor Adventures allows students to explore the outdoors at their own pace.

- **Transfer Student TC:** focused on transitioning the student in CSUCI and is open only to transfer students. Students participating in these community will be assigned to [Anacapa Village](#).



Learn more at [go.csuci.edu/Living-Learning](https://go.csuci.edu/Living-Learning)

# What is a Learning Community?

- Learning Communities at CSUCI are proven to build a sense of belonging that keeps students in school and helps them perform better academically.



California State  
University

C H A N N E L  
I S L A N D S

- By participating in a Learning Community (LC), you will join a cohort of your fellow first-year Dolphins to:
  - Take a set of connected courses (2-4) that fulfill General Education and/or Graduation Requirements in the Fall\*.
  - Take 1 or more courses that fulfill General Education and/or Graduation Requirements in the Spring\*.
  - Get a guaranteed seat in high-demand first year courses.
  - Receive peer mentorship from an upper-class Embedded Peer Mentor (EPM) who will help you build skills for social and academic success in college.
  - Participate in co-curricular events, activities and trips related to your LC.

Learn more at [go.csuci.edu/lc](https://go.csuci.edu/lc)

# Get Connected in Your Community



California State  
University  
CHANNEL  
ISLANDS

**Learning Communities (LC):** Includes assigned courses and all below have an on-campus living component. You do not have to live on campus to join any Learning Community!

- **The Bedford and Dr. Irene Pinkard Multicultural LC:** Students work to develop leadership and mentorship skills to encourage a sense of belonging at CI, critically analyze issues that impact the Black and other vulnerable populations of the world, and to imagine and create more inclusive futures.
- **The Health Care Integrative LC:** Students can look forward to guest speakers, movie nights, and trips to local medically related locations or events.
- **Infinity Dolphins: Neurodiversity & Neuroinclusion LC:** Students can look forward to presentations regarding campus resources, guest speakers and events/activities with the CI Mission Centers and various Student Services!
- **Michele Serros Multicultural LC:** Students will focus on social justice and equity through the lens of ChicanX Studies.
- **The Islands SURF Integrative LC:** Students can look forward to presentations, research opportunities and a trip to the Santa Rosa Island Research Station, located on one of our University's namesakes, The Channel Islands!
- **Windows on the World (WOW) International LC:** Students can look forward to the exploration of intercultural themes and experiences to facilitate global perspectives.



Learn more at  
[go.csuci.edu/lc](https://go.csuci.edu/lc)





# Learning Communities Continued

- **Discovery Integrative LC:** *students can look forward to guest speakers, movie nights, cultural celebration and trips to local cultural centers and museums!*
- **CI On-the-Go Integrative LC:** *students can look forward to building community in hybrid and online classes that link, utilize, connect, and grow professional world communication strategies with practical applications.*
- **The MVS Social Impact International LC:** *students will explore the idea of business as a force for good through a speaker series, field trips, and participation in CI's Social Innovation Challenge. All courses fulfill General Education requirements and major requirements for the Business Major!*
- **The Serve it Up Discovery Community Engagement LC:** *Students interested in service, activism, and social justice can look forward to gaining life skills and a sense of community through course discussions, guest speakers, and off-campus service.*
- **Discovery Multicultural LC:** *students can look forward to guest speakers, movie nights, cultural celebrations and trips to local cultural centers and museums!*
- **The Discovery International LC:** *students can look forward to presentations regarding study abroad, guest speakers and events/activities with CSU Channel Islands International Student population!*
- **The Golden Dolphins Integrative LC:** *students can look forward to building community, completing the "golden four" and other GE requirements, presentations on campus resources, Math and writing support, guest speakers, and field trips!*



# Learning Community Events



A PIECE OF BLACK HISTORY

## Colonel Allensworth State Historic Park Trip

May 7, 2022  
Transportation and Meals Provided

RSVP:

[https://csuci.qualtrics.com/jfe/form/SV\\_6LINm0tB3Uw36ES?Q\\_CHL=qra](https://csuci.qualtrics.com/jfe/form/SV_6LINm0tB3Uw36ES?Q_CHL=qra)



The University encourages persons with disabilities to participate in its programs and activities. If you anticipate needing any type of accommodation, or have questions about the physical access provided, please contact Disability Accommodations and Support Services at (805) 437-3311 or [accommodations@csuci.edu](mailto:accommodations@csuci.edu) as soon as possible.



LEARNING COMMUNITIES PRESENT

INSTRUCTIONALLY RELATED ACTIVITIES CHANNEL ISLANDS

## WHEN BUTTERFLIES DANCE

A Ballet Folklorico Event

04.13.22  
5-6PM

CENTRAL MALL (BY FOUNTAIN)

ENJOY A PERFORMANCE, TACOS AND PAN DULCE!

The University encourages persons with disabilities to participate in its programs and activities. If you anticipate needing any type of accommodation, or have questions about the physical access provided, please contact Disability Accommodations and Support Services at (805) 437-3311 or [accommodations@csuci.edu](mailto:accommodations@csuci.edu) as soon as possible.



## FLESH & BONE: THE ART OF ANATOMY

Health Care Learning Community Trip to The Getty Museum

4.29.2022  
9 A.M. - 6 P.M.

TRANSPORTATION AND LUNCH PROVIDED

The University encourages persons with disabilities to participate in its programs and activities. If you anticipate needing any type of accommodation, or have questions about the physical access provided, please contact Disability Accommodations and Support Services at (805) 437-3311 or [accommodations@csuci.edu](mailto:accommodations@csuci.edu) as soon as possible.

RSVP: [www.tinyurl.com/hlcgetty22](http://www.tinyurl.com/hlcgetty22)





# On-Campus Housing Accommodations- Freshmen

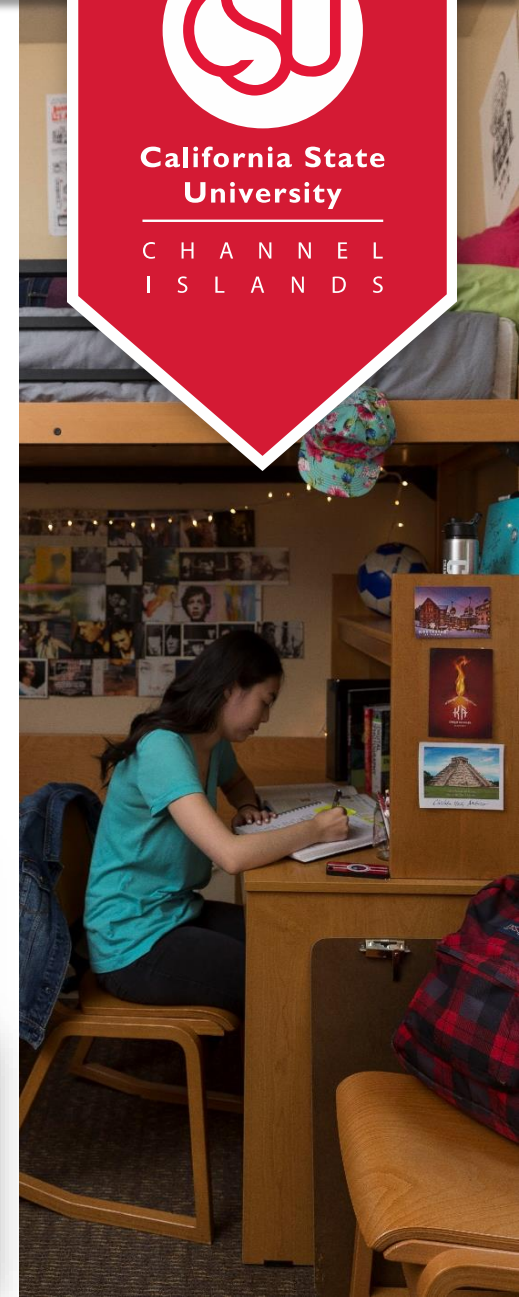
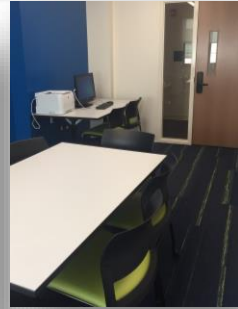


California State  
University

CHANNEL  
ISLANDS

## Santa Rosa Village

- Traditional residence halls
- Each grouping of students per RA is called a Pod
  - 39 residents to a Pod
- Double occupancy bedrooms
  - *Single rooms are reserved for accommodation needs first, then followed by a lottery for those with a single room preference*
- Each Pod has a family room, all-gender restroom, women's restroom, men's restroom, and shared study rooms with adjacent Pod.



# On-Campus Housing Accommodations- Transfer

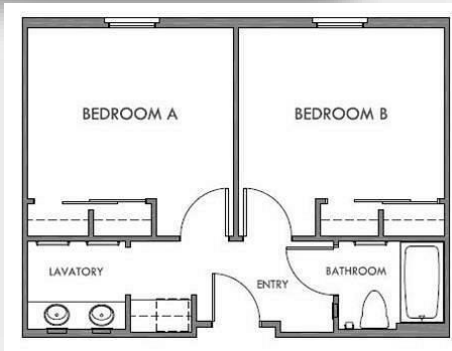


California State University

CHANNEL ISLANDS

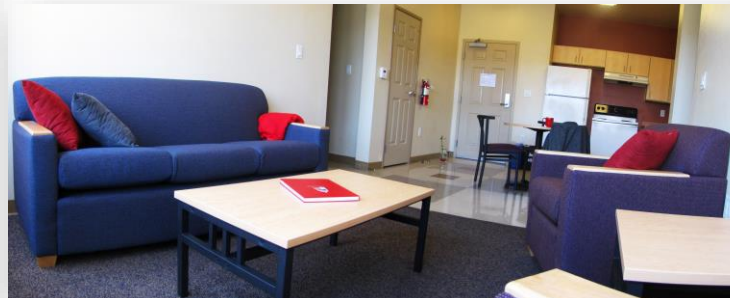
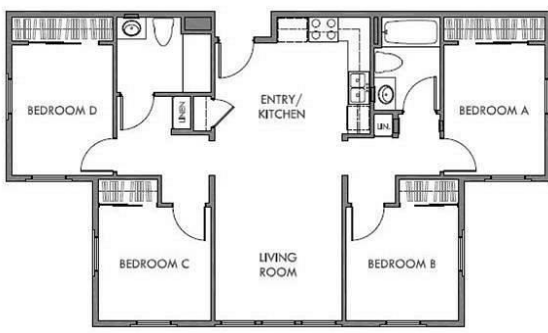
## Santa Cruz Village

- Two-bedroom, one-bathroom suites
- 4 students per suite
- Has single occupancy accommodations
  - *Single rooms are reserved for accommodation needs first, then followed by a lottery for those with a single room preference*



## Anacapa Village

- Apartments contain 4 bedrooms, 2 bathrooms, a kitchen and living room
- Private bedroom in a shared apartment
  - No single apartment units in Anacapa Village



Please note that our Town Center Village only houses approx. 100 residents and typically is occupied by returning, senior standing residents.



# Safety Features

- ▶ CSUCI ranked 9<sup>th</sup>-safest campus in the country (CollegeStats.org)
- ▶ Live-in RAs and professional staff provide 24/7 duty coverage
- ▶ Safe & secure with EMT certified police officers on campus
- ▶ CARE Team & 24/7 phone in-person counseling
- ▶ Location
- ▶ Facility access
- ▶ University Police
- ▶ Community Living Standards
- ▶ CI Alert Notifications



California State  
University

CHANNEL  
ISLANDS



CI alumni and previous Emergency Management Student Assistant becoming a police officer



Caps Clinicians and CARE Case Manager



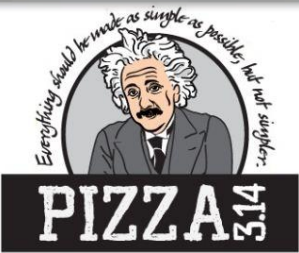
CI Police Sergeant & Officer pictured with our RAs during training.



President Yao pictured with our CI Police Department, Emergency Management Team, and Public Safety Officers

# Meal Plan

- All residents must purchase a meal plan
- Meal plans consist of meal “swipes” in Islands Café and Flex Dollars to spend at the Student Union, Library, and Town Center eateries
- Islands Café has a wide variety of food options; all-you-care-to-eat style
- All campus dining locations allow the purchase of individual meals for guests



[Student.housing@csuci.edu](mailto:Student.housing@csuci.edu)



# Steps to Secure On-Campus Housing

1. Submit Intent to Enroll (select Orientation date)
2. Begin Housing Application, pay \$50 application fee:
  - ✓ Log-on to myCI account
  - ✓ Select “Student Housing” link
3. Sign License Agreement
4. Over 18: electronic signature accepted
  - ✓ Under 18: requires parent guarantor hard copy mailed to HRE office
4. Initial deposit of \$500, due by June 1
  - NOTE: Those meeting requirements will automatically be authorized to defer their housing deposit to August 16.
    - Completed FAFSA by priority filing deadline (March 2)
    - Federal expected family contribution (EFC) of \$6,000 or less
    - Submitted requested financial aid documents required as part of the verification process. Refer to your myCI "To Do List" to confirm information for submission to the Financial Aid office **NO LATER THAN July 1**
5. Due date for fall 2022 fees is August 16: pay in full, or sign up for Housing Installment Payment Plan (HIPP)
6. Move in August 19!



California State  
University

C H A N N E L  
I S L A N D S





California State  
University

CHANNEL  
ISLANDS



# Important Administrative Info

## Communication:

- All information communicated via myCI email – check your junk/spam folder.

## Payments:

- Housing application fee and deposit **MUST** be paid through the Student Housing application. Future payments can be made electronically via myCI student portal.
- We offer Housing Installment Payment Plan (HIPP). The HIPP costs \$33 per semester to use. Sign up via myCI.
  - Fall HIPP payments are due August 16, September 16, and October 16.
  - If you do not choose a payment plan, payment is due in full on August 16.



# Important Financial Aid Info

Refer to your myCI To Do List to confirm documents required for Financial Aid. If you are eligible to defer your housing deposit to the first payment deadline, please note the following criteria must be met,

- 4/1/2022, FASFA priority application deadline (*extended from 3/2 for academic year 2022/2023 only*)
- Estimated Family Contribution (EFC), equates to \$0-6,000
  - **NOTE:** If a change occurs with your reported EFC above \$6,000, students should be prepared to submit payment towards the housing deposit. The submission date of deposit will reflect your updated application priority date for housing accommodations.
- 7/1/2022, document deadline for financial aid documents required as part of the verification process
  - **NOTE:** Students who are selected for verification and miss the 7/1 document deadline, are not guaranteed to receive their financial aid award by the first disbursement for fall 2022.

Financial aid must fund by August 16 to cover Housing license fees. If funding does not occur by the payment deadline, personal payment must be paid out of pocket until financial aid funds to your student account.

If you intend to use student or parent plus loans, be sure to complete the online loan counseling and master promissory note as soon as possible after accepting your awards to avoid delays in with financial aid funding.



California State  
University

C H A N N E L  
I S L A N D S



# Housing Dates & Deadlines

JUNE

JULY

AUG

## June 1

- Priority deadline for Housing and LC/TC applications!

## June 7

- Deadline to submit accommodation requests through Disability Accommodations & Support Services (DASS)

## June 13 Deadlines:

- Transfer students to update room & roommate preferences
- Last day to cancel Housing license agreement without cancellation penalty

## July 1 Deadlines:

- FA verification documents
- Freshmen update roommate & room preferences
- Meal plan preferences (Meal plan subject to change according to village assignment)
- Enroll in 9+ units

## August 5

- Find out who your roommates will be!

## August 11-12

- Financial Aid disbursement.

## August 16

- All University fees are due (Tuition, student fees, room & board)

## August 19

- Move In!



Stay Connected



**Housing Contact Information:**

[Student.housing@csuci.edu](mailto:Student.housing@csuci.edu)

805-437-2733