

Welcome to Housing!

Island View Orientation 2019



Housing & Residential Education



Benefits of Living On Campus

1. More holistic educational experience
2. Higher retention rates and shorter time to graduation
3. Close proximity to classes, academic support, and student activities
4. Peer interaction, sense of community, and involvement



What's Happening?

300+ Events & Activities Annually

- Dances & social events
- Movie & game nights
- Recreation & intramural sports
- Tutoring & advising
- Study groups
- Weekend involvement series



Get a life ... in Housing!

Employment opportunities:

- Residence Hall Association (RHA)
- Summer Conference Assistants
- Desk Assistants (DA)
- Resident Advisor (RA)
- Groundskeepers



Living Learning Communities

- Michelle Serros Multicultural
- Bedford and Dr. Irene Pickard Multicultural
- Windows on the World International
- Student Undergraduate Research Fellows (SURF)
- Outdoor Adventures



Theme Communities

- Outdoor Adventures
- Geek Life



HRE Educational Philosophy

We are committed to:

- Placing students at the center of their educational experience by facilitating holistic growth
- Supporting personal and community responsibility development
- Diversity, equity, and civility
- Learning through problem solving and conflict resolution
- Providing facilities that support student learning



Safety Features

- ▶ CSUCI ranked 9th-safest campus in the country (CollegeStats.org)
- ▶ Live-in RAs and professional staff provide 24/7 duty coverage
- ▶ CARE Team and 24/7 phone or in-person counseling
- ▶ Location
- ▶ Facility access
- ▶ University Police
- ▶ Community Living Standards
- ▶ CI Alert Notifications



Policies & Procedures

Alcohol EDU: required assignment prior to check-in

- Online AlcoholEDU course opens by July 22
- Disciplinary consequences for failing to comply by August 19

6-Step Conduct Process: rights & responsibilities

- Conduct process to enforce Community Living Standards
- Steps are proportionate to the level of severity/disruption to the residential community
- Steps are cumulative with each incident
- Step six may result in removal from student housing, which carries a minimum two-month rent penalty, and possible University sanctions

Refer to Resident Handbook: <https://www.csuci.edu/housing/documents/20182019residenthandbook.pdf>



CSU Smoke & Tobacco Policy

Fall 2017, all CSU campuses became smoke & tobacco FREE.
The following is PROHIBITED anywhere on campus:

- Use of any kind of smoke-emitting products (i.e. cigarettes, pipes, hookahs, cigars, etc.)
- E-cigarettes, vapor products, “vaping”
- Essentially, anything that looks or gives the effects of smoking
- Tobacco and nicotine use in any form (except FDA approved smoking-cessation products when used for this purpose)
 - Smoking-cessation products and information available at CI Student Health Services



CSU Smoke & Tobacco Policy

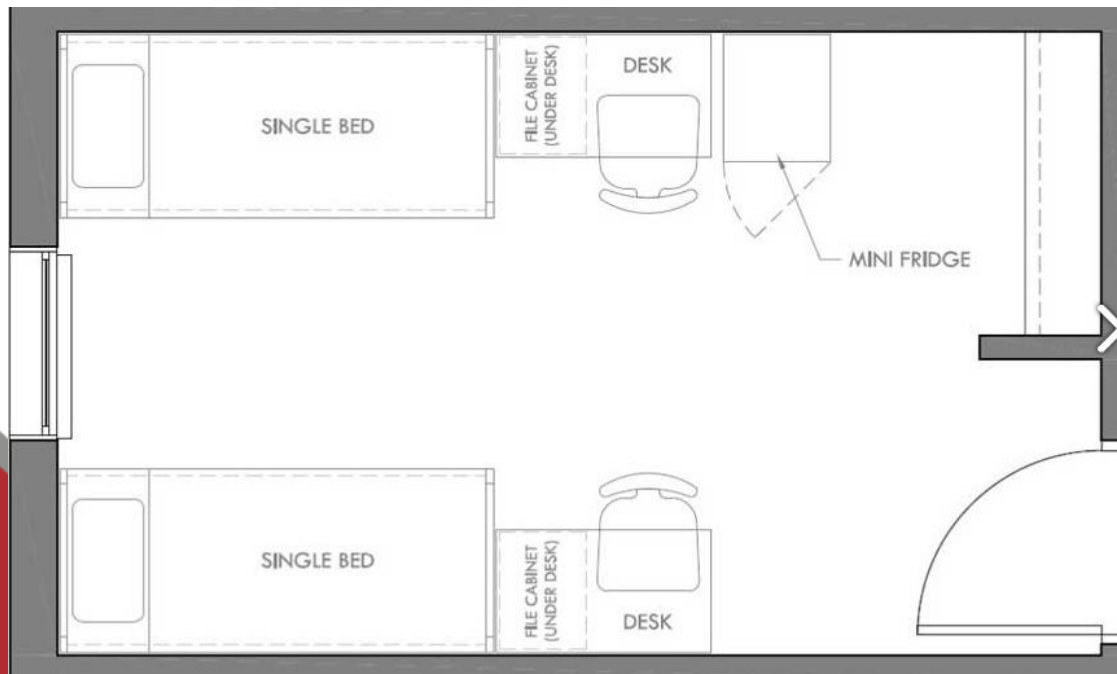
Marijuana is **NOT** allowed on campus. Do **NOT** bring, **smoke**, or **eat** it anywhere on campus.

- Possession of a valid medical marijuana card does **NOT** permit possession or use of marijuana on University property.
 - Violations are serious. Students may be removed from housing for possession/use of marijuana on campus.
- CSUCI is a recipient of Federal financial aid funds. Title IV, Part A, Safe and Drug-Free Schools, and Communities Act, does not permit possession or use of marijuana on campus.



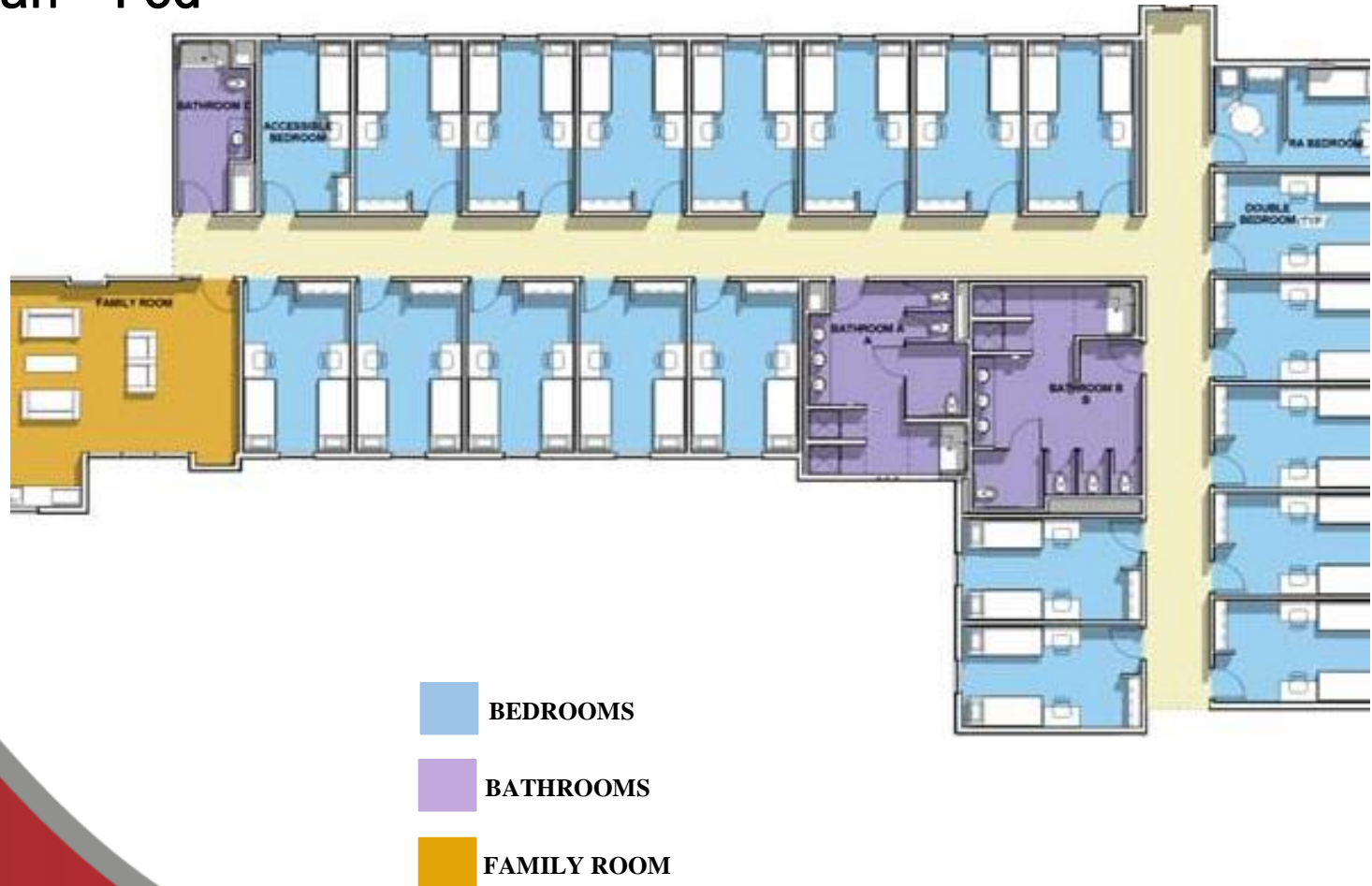
Accommodations – Santa Rosa

- Traditional, hall-style village with double or triple occupancy bedrooms
- XL bed & mattress, desk, bookshelf, filing cabinet, drawers, & chair
- One cube-fridge is provided per bedroom, no additional appliances
- Shared, gender-specific bathrooms, + private all-gender/ADA bathroom
- Pod-style family room with kitchen area, & study room
- Community courtyard, living room, & kitchen

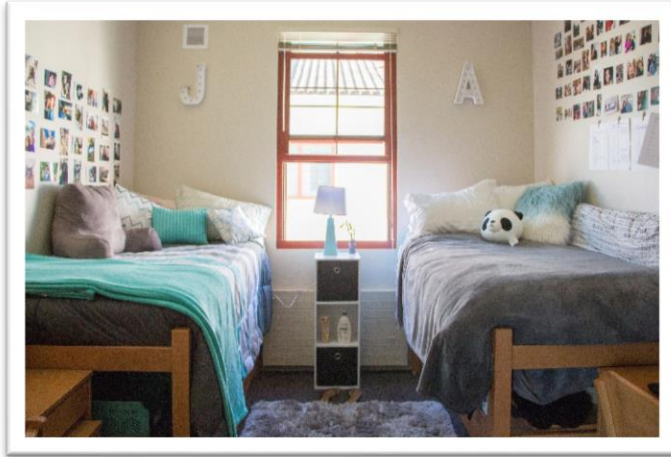


Accommodations – Santa Rosa

Floor Plan – Pod



Accommodations – Santa Rosa



Measurements

- **Room:** Santa Rosa 10'2" x 16'6"
- **Window:** 5'8" x 3'2"
- **Closet:** 58" wide
- **Bed:** 7'1" x 3'2" x 6'
- **Stackable drawer (3):** 1'10" x 2'2" x 10"
- **Desk and bookshelf:** 3'6" x 2' x 4'6"
- **File cabinet:** 1'5" x 1'1" x 1'11"
- **Chair:** 1'8" x 1'5" x 2'8"



Important Administrative Info

Communication:

- All important information communicated via email

Housing Eligibility and Assignments:

- Must be registered in 9 or more units by July 1 to retain room assignment
- Double and triple occupancy bedrooms in Santa Rosa
- Confirm roommate requests are due by July 1 through Student Housing application portal
 - One roommate requests or invites another student to be their roommate, and the other roommate must accept the request to become roommates



Important Administrative Info

Financial Aid:

Refer to your **myCI To Do List** for submission to Financial Aid.

- If you intend to use student loans and or parent plus loans, be sure to complete online loan counseling and master promissory note as soon as possible after accepting the award to avoid delays in loan funding.
- Financial aid must fund by August 20 to cover Housing fees. If it does not fund in time, personal payment must be made until it funds.

Account must be paid in full, or first Housing installment payment paid, by August 20.



HRE Retention Support Specialist

Cynthia County

- Guide, support and navigate you through CSUCI
 - Campus resources including: academic, financial, student involvement, housing, and more
 - Schedule one-on-one appointments, call, email, or drop-in to meet
- Blog: retentionsupporthousing.cikeys.com
- 805-437-1658
- cynthia.county@csuci.edu



Important Administrative Info

Payments:

- The housing application fee and deposit MUST be paid through the Student Housing application, NOT in myCI
 - Future housing and other university fee payments can be made electronically via myCI student portal or parent portal
- Housing Installment Payment Plan (HIPP) are offered each semester for \$33
 - Fall HIPP dates: August 20, September 20, & October 20

Waiting List:

- Late applicants, after May 20, will be accommodated as space is available before move-in or shortly thereafter



Facility Information

We are committed to sustainability and look for students to reduce – reuse – recycle, and refuse!

- Ceiling fans are included in Santa Rosa. Air-conditioning units are not permitted.
- Bathrooms are cleaned regularly by custodians. No custodial service in student bedrooms.
- Community kitchens are available. Rooms are not set up for cooking – meal plan is designed to meet most meal needs.
 - Santa Rosa family rooms have a regular size refrigerator, bedrooms have a cube-size mini-fridge.
- No additional appliances may brought into Housing.



Important Dates

- **July 1:** Confirm roommate requests in Housing application
- **July 1:** Enroll in 9 or more units to retain room assignment
- **July 1:** Cancellation deadline for \$100 cancellation fee
- **July 8:** Pay deposit if fee deferral was revoked
- **July 24:** Last day to cancel license without approval; however, \$200 cancellation fee
 - NOTE: requests after July 24 may be denied and, if approved, will incur daily rental penalties



Important Dates

- **August 9:** Post room assignments (subject to change)
- **August 19:** Complete Alcohol Edu online
- **August 20:** Payment due date
- **August 23:** Move in!



Parent & Supporter Tips

This is an important step for your student – and it's also an important time for you.

- Coach your student through problem solving with roommates, academic problems, and administrative issues. *Avoid stepping in to solve concerns for them.* Contact us if they are encountering too many roadblocks or if you have concerns.
- Most information you need will be on the website.
- Sign up to receive Parent & Family Programs e-newsletter. Link is on website under Resources & Forms.
- Handwritten notes still mean a lot – so do homemade chocolate chip cookies sent in care packages. 😊



Transportation & Parking Services

- Parking permits are available for purchase each semester for designated Student Housing (SH) parking lots
- Purchase permits online through myCI, link will be visible after housing fees are applied to student account
- SH permits are limited & available first-come, first-serve to residents
- Parking regulations are enforced at all times – there are NO “no-cite” days
- Bus pass, RideMatching carpools, & Zipcar also available
- Located in Placer Hall



Connect with Us



CSUCI HRE



@CI_Housing



csucihousing



CI_housing



cihousing – “CI Housing & Residential Education”

Housing website: www.csuci.edu/housing



Virtual tour: YOUVIS.IT/N3ZI1C



References

- CI Housing page: <http://www.csuci.edu/housing/>
- Housing rates: <http://www.csuci.edu/housing/accommodations-rates/index.htm>
- Housing dates: <http://www.csuci.edu/housing/dates.htm>
- FAQ's: <http://www.csuci.edu/housing/apply/faq.htm>
- License agreement: <http://www.csuci.edu/housing/accommodations-rates/license-agreement.htm>
- Disability accommodations:
https://csuci.qualtrics.com/jfe/form/SV_5AsrIY4QImiOp1j
- Resident Handbook: <http://www.csuci.edu/housing/residenthandbook.htm>
- Parent & Family Programs: <https://www.csuci.edu/housing/pfp.htm>



Questions?

