

# Welcome to Housing!

Transfer Island View Orientation 2019



# Housing & Residential Education



# Benefits of Living On Campus

1. More holistic educational experience
2. Higher retention rates and shorter time to graduation
3. Close proximity to classes, academic support, and student activities
4. Peer interaction, sense of community, and involvement



# What's Happening?

## 300+ Events & Activities Annually

- Dances & social events
- Movie & game nights
- Recreation & intramural sports
- Tutoring & advising
- Study groups
- Weekend involvement series



# Get a life ... in Housing!

## Employment opportunities:

- Residence Hall Association (RHA)
- Summer Conference Assistants
- Desk Assistants (DA)
- Resident Advisor (RA)
- Groundskeepers



# HRE Educational Philosophy

**We are committed to:**

- Placing students at the center of their educational experience by facilitating holistic growth
- Supporting personal and community responsibility development
- Diversity, equity, and civility
- Learning through problem solving and conflict resolution
- Providing facilities that support student learning



# Safety Features

- ▶ CSUCI ranked 9<sup>th</sup>-safest campus in the country (CollegeStats.org)
- ▶ Live-in RAs and professional staff provide 24/7 duty coverage
- ▶ CARE Team and 24/7 phone or in-person counseling
- ▶ Location
- ▶ Facility access
- ▶ University Police
- ▶ Community Living Standards
- ▶ CI Alert Notifications



# Policies & Procedures

## **Alcohol EDU: required assignment prior to check-in**

- Online alcohol education course opens by July 22
- Disciplinary consequences for failing to comply by August 19

## **6-Step Conduct Process: rights & responsibilities**

- Conduct process to enforce Community Living Standards
- Steps are proportionate to the level of severity/disruption to the residential community
- Steps are cumulative with each incident
- Step six may result in removal from student housing, which carries a minimum two-month rent penalty, and possible University sanctions

Refer to Resident Handbook: <https://www.csuci.edu/housing/documents/20182019residenthandbook.pdf>





# CSU Smoke & Tobacco Policy

Fall 2017, all CSU campuses became smoke & tobacco FREE.  
The following is PROHIBITED anywhere on campus:

- Use of any kind of smoke-emitting products (i.e. cigarettes, pipes, hookahs, cigars, etc.)
- E-cigarettes, vapor products, “vaping”
- Essentially, anything that looks or gives the effects of smoking
- Tobacco and nicotine use in any form (except FDA approved smoking-cessation products when used for this purpose)
  - Smoking-cessation products and information available at CI Student Health Services



# CSU Smoke & Tobacco Policy

Marijuana is **NOT** allowed on campus. Do **NOT** bring, **smoke**, or **eat** it anywhere on campus.

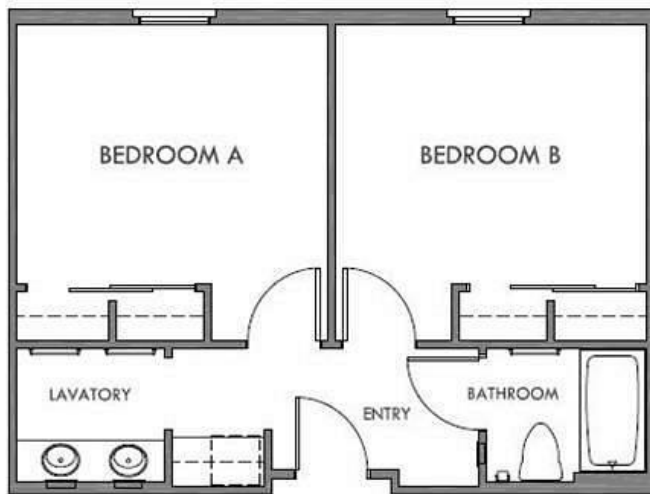
- Possession of a valid medical marijuana card does **NOT** permit possession or use of marijuana on University property.
  - Violations are serious. Students may be removed from housing for possession/use of marijuana on campus.
- CSUCI is a recipient of Federal financial aid funds. Title IV, Part A, Safe and Drug-Free Schools, and Communities Act, does not permit possession or use of marijuana on campus.



# Accommodations

## Santa Cruz Village

- 2-bedroom, 1-bathroom suites
- Separate vanity area
- Shared by 4 students in double occupancy bedrooms
- Minimum required meal plan: Basic 160



## Anacapa Village

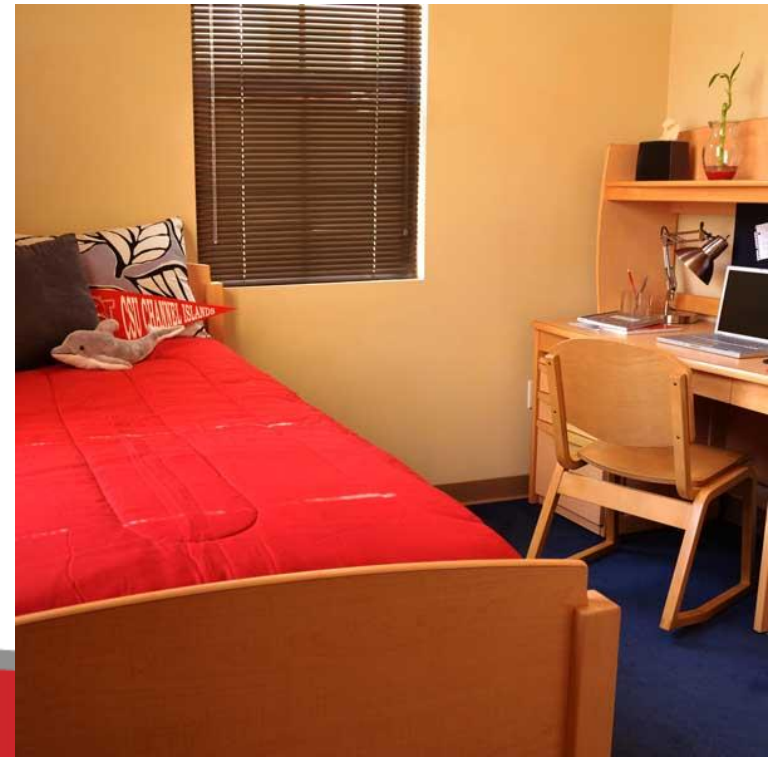
- 4-bedroom, 2-bathroom apartment
- Full kitchen & living room
- Shared by 4 to 6 students in single or double occupancy bedrooms
- Transfer floor community
- Minimum required meal plan: Basic 60



NOTE: Accommodations are typical, but not guaranteed. Occupancy varies based on availability of spaces, and date of application. Select room type preference on application.

# Measurements

- Room: Santa Cruz double 12'7"x10'8"  
Anacapa 8'10" x 11'2" or 9'10" x 9'8"
- Bed: 7'1" x 3'2" x 6'
- Stackable drawer (3): 1'10" x 2'2" x 10"
- Desk and bookshelf: 3'6" x 2' x 4'6"
- File cabinet: 1'5" x 1'1" x 1'11"
- Chair: 1'8" x 1'5" x 2'8"
- Window: 5'8" x 3'2"



# Anacapa Double Occupancy



# Santa Cruz Double Occupancy



# Important Administrative Info

## Communication:

- All important information communicated via email

## Housing Eligibility and Assignments:

- Single and double occupancy bedrooms in Anacapa
- Double occupancy in Santa Cruz
- Must be registered in 9 or more units by July 29 to retain room assignment



# Important Administrative Info

## Financial Aid:

Refer to your **myCI To Do List** for submission to Financial Aid.

- If you intend to use student loans and or parent plus loans, be sure to complete online loan counseling and master promissory note as soon as possible after accepting the award to avoid delays in loan funding.
- Financial aid must fund by August 20 to cover Housing fees. If it does not fund in time, personal payment must be made until it funds.

**Account must be paid in full, or first Housing installment payment paid, by August 20.**





# HRE Retention Support Specialist

## Cynthia County

- Guide, support and navigate you through CSUCI
  - Campus resources including: academic, financial, student involvement, housing, and more
  - Schedule one-on-one appointments, call, email, or drop-in to meet
- Blog: [retentionsupporthousing.cikeys.com](http://retentionsupporthousing.cikeys.com)
- 805-437-1658
- [cynthia.county@csuci.edu](mailto:cynthia.county@csuci.edu)



# Important Administrative Info

## Payments:

- Student Housing application fee and deposit MUST be paid through the Student Housing application portal
  - Future housing and other university fee payments can be made electronically via myCI student portal or parent portal
- Housing Installment Payment Plan (HIPP) are offered each semester for \$33
  - Fall HIPP dates: August 20, September 20, & October 20

## Waiting List:

- Late applicants, after May 20, will be accommodated as space is available before move-in or shortly thereafter



# Facility Information

We are committed to sustainability and look for students to reduce – reuse – recycle, and refuse!

- Ceiling fans are included in Anacapa single bedrooms & living rooms.
- Floor heaters and air-conditioning units are not permitted.
- No custodial service in suites or apartments.
- Anacapa apartments have kitchens, and common living area
- Community kitchens and lounge areas are available in Santa Cruz. Rooms are not set up for cooking – meal plan is designed to meet most meal needs.



# Important July Dates

- **July 8:** Pay deposit if fee deferral was revoked
- **July 24:** Last day to cancel license without approval; however, \$200 cancellation fee
  - NOTE: requests submitted July 24 may be denied and, if approved, will incur daily rental penalties
- **July 29:** Enroll in 9 or more units to retain room assignment



# Important August Dates

- August 9: Post room assignments (subject to change)
- August 19: Complete AlcoholEDU online
- August 20: Payment due date
- August 23: Move in!



# References

- CI Housing page: <http://www.csuci.edu/housing/>
- Housing rates: <http://www.csuci.edu/housing/accommodations-rates/index.htm>
- Housing dates: <http://www.csuci.edu/housing/dates.htm>
- FAQ's: <http://www.csuci.edu/housing/apply/faq.htm>
- Living Learning Communities:  
<http://www.csuci.edu/academics/learningcommunities/>
- License agreement: <http://www.csuci.edu/housing/accommodations-rates/license-agreement.htm>
- Disability accommodations:  
[https://csuci.qualtrics.com/jfe/form/SV\\_5AsrIY4QImiOp1j](https://csuci.qualtrics.com/jfe/form/SV_5AsrIY4QImiOp1j)
- Resident Handbook: <http://www.csuci.edu/housing/residenthandbook.htm>
- Parent & Family Programs: <https://www.csuci.edu/housing/pfp.htm>



# Connect with Us



CSUCI HRE



@CI\_Housing



csucihousing



CI\_housing



cihousing – “CI Housing & Residential Education”

**Housing website:** [www.csuci.edu/housing](http://www.csuci.edu/housing)



**Virtual tour:** [YOUVIS.IT/N3ZI1C](http://YOUVIS.IT/N3ZI1C)



# Transportation & Parking Services

- Parking permits are available for purchase each semester for designated Student Housing (SH) parking lots
- Purchase permits online through myCI, link will be visible after housing fees have been applied to student accounts
- SH permits are limited & available first-come, first-serve to residents
- Parking regulations are enforced at all times – there are NO “no-cite” days
- Bus pass, RideMatching carpools, & Zipcar also available
- Located in Placer Hall





# Questions?

