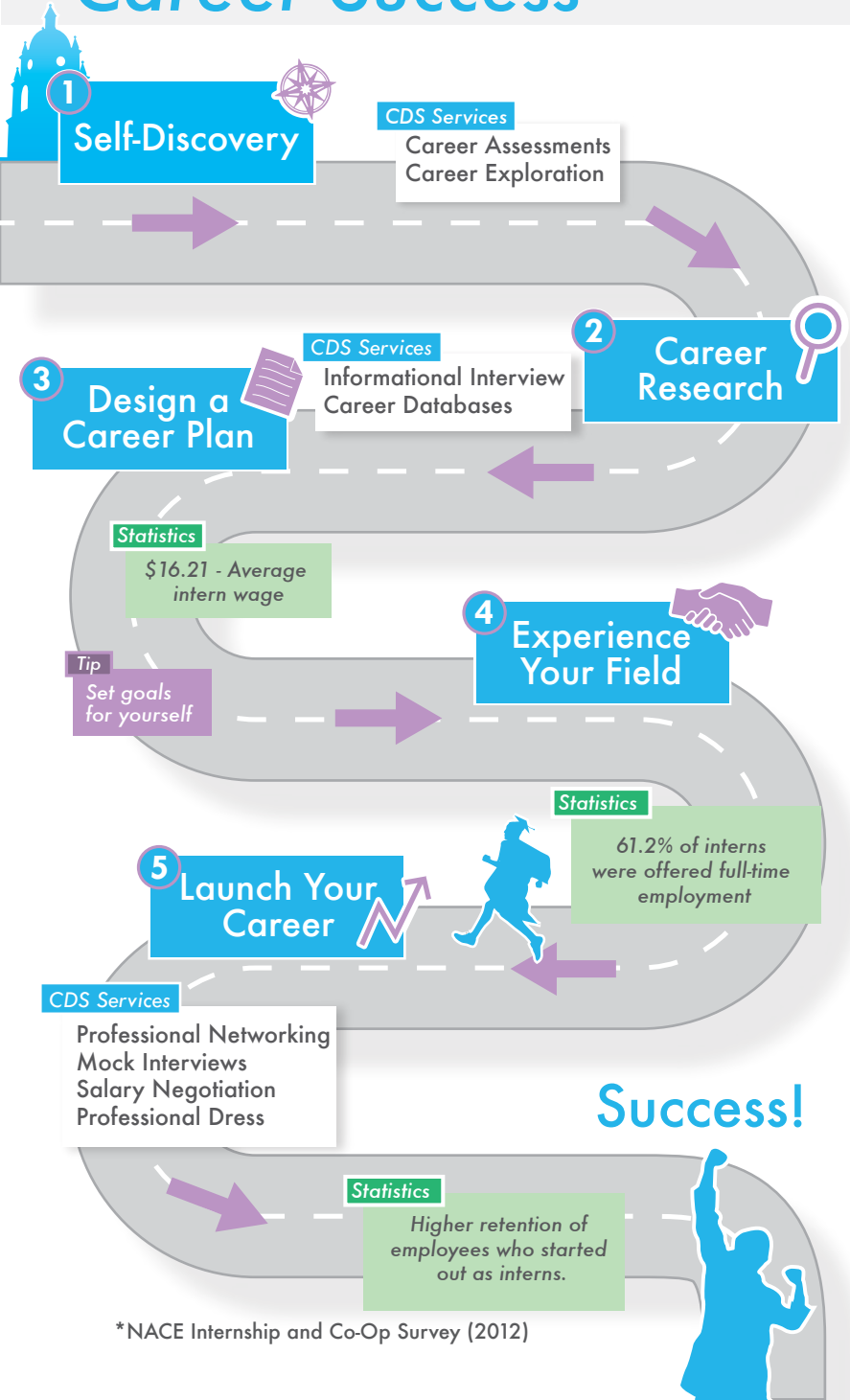


# The Road to Career Success



## Link into your future career today!

Explore your career pathway by visiting Dolphin CareerLink via your [myCI](#) student portal on-line.

To Access Dolphin CareerLink: [www.myci.csuci.edu](http://www.myci.csuci.edu)

- Login to myCI student portal
- Click "Dolphin CareerLink" under "My Links"



### Features Include:

On-Campus/Off-Campus Jobs & Internships  
Resume & Mock Interview Handbooks  
Graduate School Handbook  
Salary Calculator  
Registration for Workshops & Events  
Student Employment Application (On-Campus)  
Career Assessments  
Career Exploration Resources  
Networking Strategies  
Job Search Database (NACElink)

## Contact Us



[go.csuci.edu/cdsweb](http://go.csuci.edu/cdsweb)

One University Drive, Camarillo, CA 93012  
Bell Tower 1548  
(805) 437-3270  
[career.services@csuci.edu](mailto:career.services@csuci.edu)  
[www.csuci.edu/careerdevelopment](http://www.csuci.edu/careerdevelopment)  
M-F 9:00 a.m. - 5:00 p.m.



[go.csuci.edu/cdsFB](http://go.csuci.edu/cdsFB)



[go.csuci.edu/cdstweet](http://go.csuci.edu/cdstweet)



[go.csuci.edu/linkedingroup](http://go.csuci.edu/linkedingroup)

For more information, please contact the Career Development Center at (805) 437-3270 or [career.services@csuci.edu](mailto:career.services@csuci.edu). Persons who, because of a special need or condition, would like to request an accommodation should contact Disability Resource Programs at (805) 437-3331 or email [accommodations@csuci.edu](mailto:accommodations@csuci.edu) as soon as possible, but no later than ten business days before the event, so that appropriate arrangements can be made.



Channel Islands  
CALIFORNIA STATE UNIVERSITY

## Career Development Services

### Events and Workshops Schedule

# SPRING 2014



California State  
University

CAREER  
DEVELOPMENT  
SERVICES

C H A N N E L  
I S L A N D S

## January

**Thur 30** **Open House**  
10:00 a.m. - 2:00 p.m.  
Bell Tower 1548

Meet the Career Development Services team and learn about Spring 2014 workshops and events. Appetizers and refreshments will be served.

## February

**Wed 12** **Exploring Career Pathways**  
11:00 a.m. - 12:00 p.m.  
Bell Tower 1548

Undecided about your career options? Explore how to connect your skills, interests and values with potential career paths.

**Tue 25** **Graduate School Application Planning**  
4:00 p.m. - 5:00 p.m.  
Bell Tower 1548

Plan & prepare for the graduate school application process to meet admission requirements and deadlines.

## March

**Wed 12** **Career Boot Camp**  
4:00 p.m. - 6:00 p.m.  
Bell Tower 1548

Participate in a crash course boot camp to obtain the necessary skills to locate full-time employment, prepare for the interview process, and learn how to secure an employment opportunity. This boot camp is designed for graduating seniors and alumni. However, the boot camp is open to all students interested in internships and/or employment.

**Mon 17** **Plan B: Graduate School or Full-Time Work**  
3:30 p.m. - 5:00 p.m.  
Bell Tower 1548

Are you considering the benefits and limitations of attending graduate school versus working full-time? Find out how to critically analyze your options and prepare for post-graduation.

**Wed 19** **Employer Interviews**  
2:00 p.m. - 4:00 p.m.  
Bell Tower 1548

Polish your interview skills by reserving a 30-minute interview with a local employer on Dolphin CareerLink.

## Weekly Events:

### Résumé Clinic/Drop-In Career Counseling Bell Tower 1548 (February 3rd - May 1st)

Every Monday  
1:00 p.m. - 3:00 p.m.

Every Tuesday & Thursday  
10:00 a.m. - 12:00 p.m.

Every Wednesday  
2:00 p.m. - 4:00 p.m.

## April

★ = Career Week 2014 Events

**Tue 1** **Graduate School to Career Transition**  
5:00 p.m. - 6:00 p.m.  
El Dorado Hall

Learn how to develop a solid resume, implement effective job/internship search strategies, and impress employers with polished interview skills unique to graduate students.  
\*Designed for graduate students

**★ Mon 7** **How To Prepare For The Fair: Workshop**  
1:00 p.m. - 2:00 p.m. &  
2:00 p.m. - 3:00 p.m.  
Bell Tower 1548

Learn last minute tips on how to effectively prepare for the Career & Internship Fair including strategies for success.

**★ Tue 8** **Dress for Success Fashion Show & Employer Panel**  
12:00 p.m. - 1:30 p.m.  
Student Union Building Stage

Engage with local employers regarding professional attire, effective interview communication and strategies for career success.

**★ Thu 10** **12th Annual Career & Internship Fair**  
10:00 a.m. - 2:00 p.m.  
Aliso Plaza

Network with local organizations who are actively recruiting to fill internships, part-time and/or full-time employment opportunities.




For a list of participating employers, visit: [www.csuci.edu/careerdevelopment/news](http://www.csuci.edu/careerdevelopment/news)

## April

(Continued)

**Thu 24** **Career Boot Camp**  
12:00 p.m. - 2:00 p.m.  
Bell Tower 1548

Participate in a crash course boot camp to obtain the necessary skills to locate full-time employment, prepare for the interview process, and learn how to secure an employment opportunity. This boot camp is designed for graduating seniors and alumni. However, the boot camp is open to all students interested in internships and/or employment.

**Tue 29** **LinkedIn 101**   
1:00 p.m. - 2:00 p.m.  
Bell Tower 1548

Discover how employers recruit with social media and how to integrate LinkedIn as a job search tool in this hands-on workshop. \*Please bring a laptop to create or edit your LinkedIn Profile \*

## May

**Thu 1** **Employer Interviews**  
3:00 p.m. - 5:00 p.m.  
Bell Tower 1548

Polish your interview skills by reserving a 30-minute interview with a local employer on Dolphin CareerLink.

### Featured Online Services

#### Resources

- Resume Resources
- Career Assessments
- Career Research

#### Databases

- Virtual Mock Interviews <sup>New!</sup>

#### Workshops:

- Getting Started: Discover Your Career Interests
- Design A Plan That Leads to Your Career Success
- Plan B: Graduate School or Full-Time Work?

### Graduate School Preparation Resources



#### Graduate School Application Advising:

Visit Career Development Services during Drop-In Career Counseling to discuss the basic steps of graduate school research, application process, planning, and preparation methods.



(Online Only)

#### Graduate School Bound Program:

The purpose of Graduate School Bound Program is to assist CI students who are interested in graduate school. The program is offered in a self-paced online module format accessible at: [go.csuci.edu/cdsgraduate](http://go.csuci.edu/cdsgraduate)

Put a face to  
your future

Get a new Linked in  
image at Drop-In  
Career Counseling



California State  
University

CAREER  
DEVELOPMENT  
SERVICES  
CHANNEL  
ISLANDS

