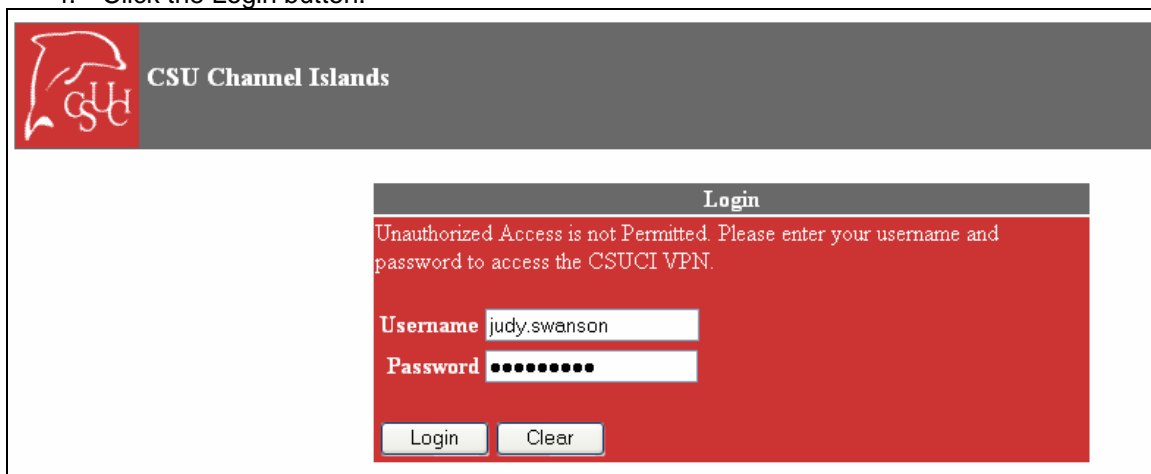


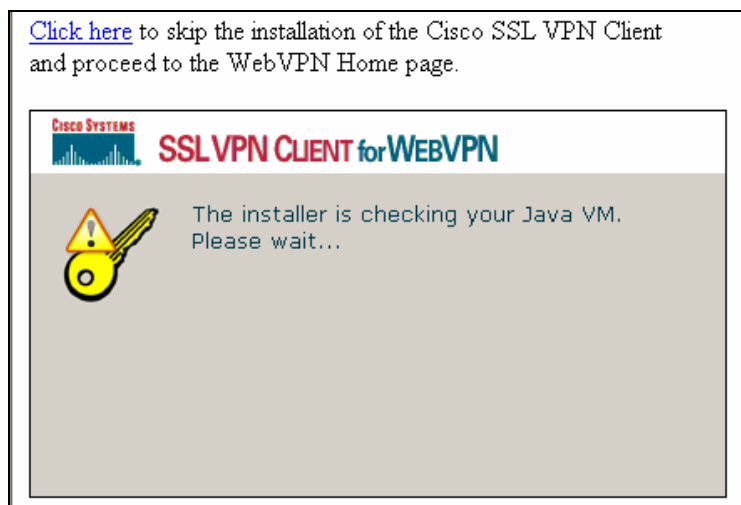
Off Campus Access to Information Technology Resources

Beginning in the spring semester, 2008, web access to departmental and individual folders located on the campus network will be a reality, as well as access to software applications that are available through the campus KeyServer. This is made possible through the implementation of a technology known as Virtual Private Network (VPN). This document will provide the details of making the connection via the web interface.

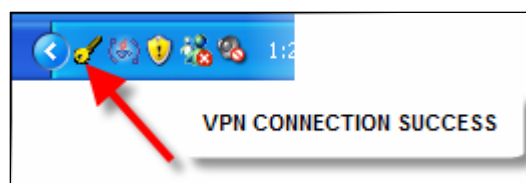
1. Type in <https://access.csuci.edu> into a web browser.
2. The campus authentication page will appear.
3. Enter your Domain Username and password. This information will be the same as used to login into your email, or login to a computer on campus.
4. Click the Login button.




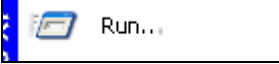
5. The SSLVPN Client for WebVPN will begin and a series of dialog boxes similar to the one shown below will appear as the web browser makes the connection.
6. No action is required by you.

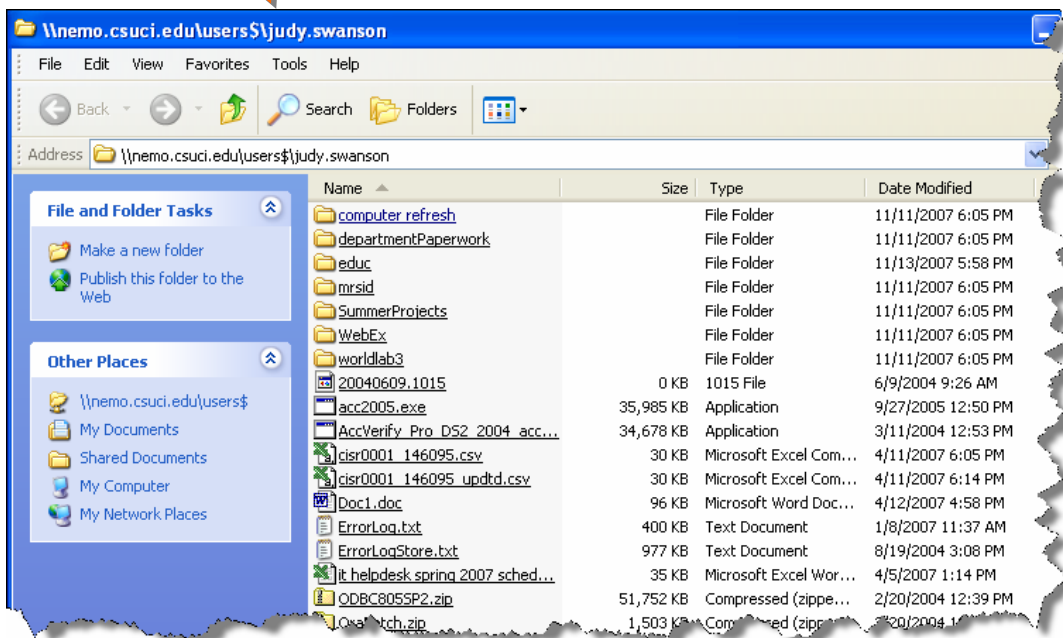
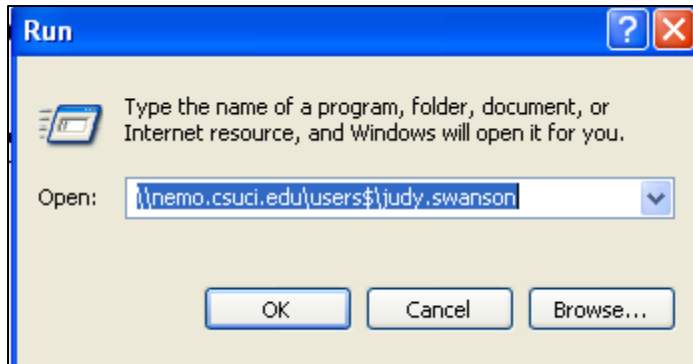


7. Once the connection has been established, the browser window will close and you will see a small key in the right section of your Task Bar.



HOW TO ACCESS YOUR PERSONAL CAMPUS FOLDER LOCATED ON THE NETWORK DRIVE

1. From the START  button, choose the RUN  command from the submenu bar.
2. Type in the path to your personal folder as indicated in the screenshot below, but type in your own name. [\\nemo.csuci.edu\users\\$judy.swanson](http://nemo.csuci.edu/users$judy.swanson) (put your own name).
3. The only person who can access your personal file is you.
4. Click the OK button.
5. A connection will be made to your personal folder where you will see your personal documents and folders.



6. You can now click on any folder or document and make changes or create new documents, in the same manner that is done when on campus.

DISCONNECTING FROM YOUR REMOTE ACCESS CONNECTION

1. To disconnect and end your remote session, click on the gold key located in your task bar. The following dialog box will appear:
2. Click on the DISCONNECT button
3. Your remote connection is now ended.

