

Wireless Setup on a University Owned Macintosh running 10.5

1. Open System Preferences located by clicking the Apple on the top left hand side of the screen, as shown in Figure 1.

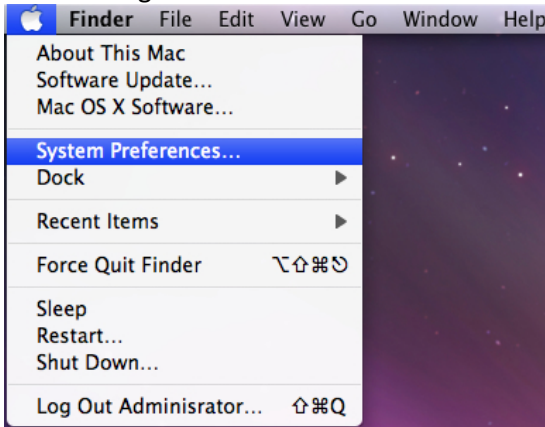


Figure 1: Selecting System Preferences

2. You will then be prompted with the System Preferences screen. Click on "Network"

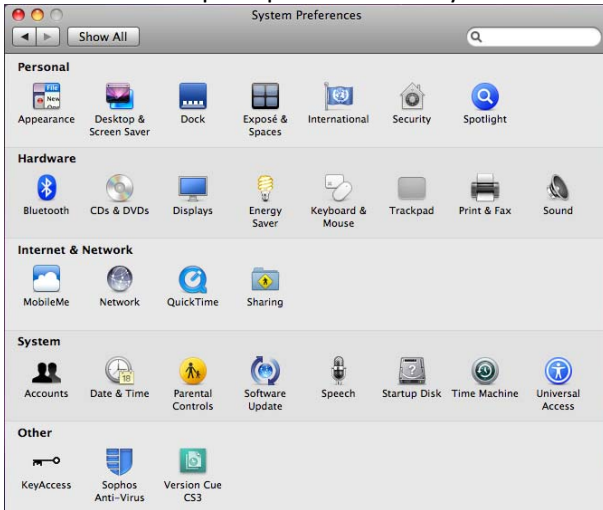


Figure 2: System Preferences

3. Select Airport from the Network Pane. Select “Advanced” located on the lower right hand side of the Network window above “Revert” and “Apply”

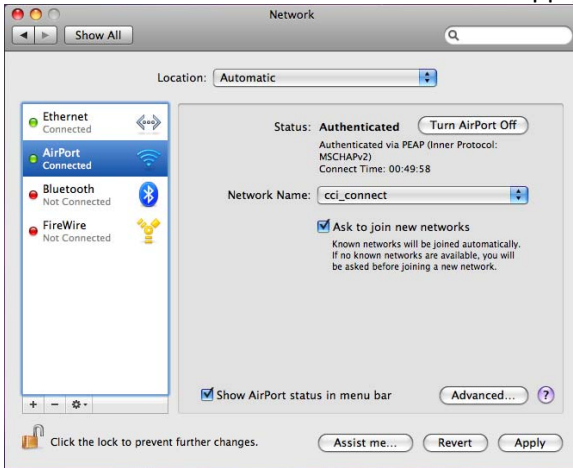


Figure 3: Airport Advanced Settings

4. Select “802.1x” as shown below in Figure 4. Select the Plus Icon located on the lower left hand side of the “Network” pane.

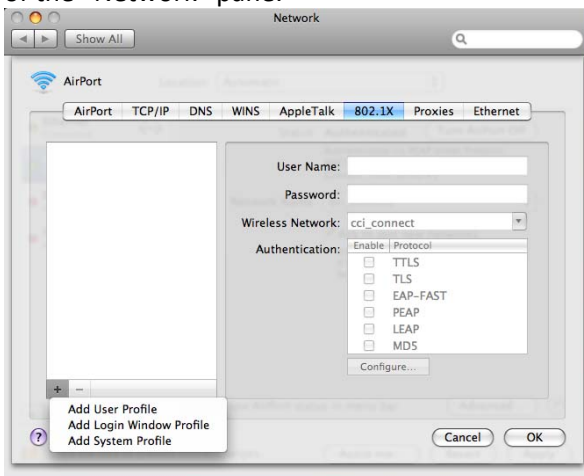


Figure 4: 802.1x Airport Advanced Settings

5. Select “Add system Profile”

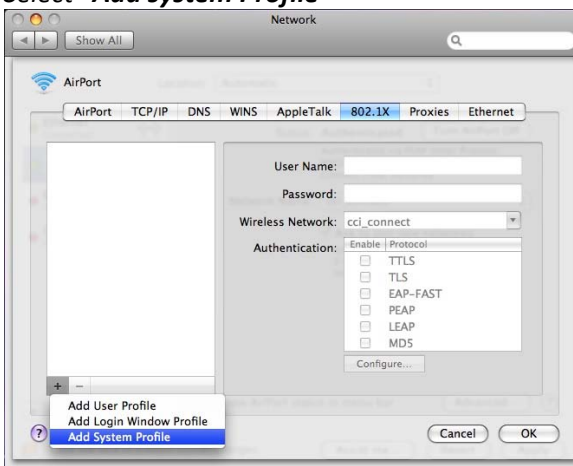


Figure 5: 802.1x Add System Profile

6. Select Wireless Network: “cci_connect” and select **PEAP**

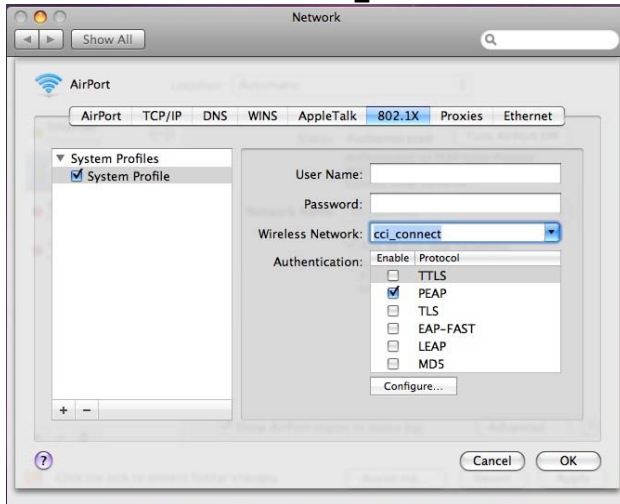


Figure 6: 802.1x PEAP selection

7. Select “**OK**”
8. Select “**Apply**” and close your “System Preferences”