



The California
State University

CSU Channel Islands



CSU Channel Islands (CSUCI) is reimagining higher education for a new generation and era and provides an exceptional higher education experience to students from Ventura and Santa Barbara counties and the LA Basin. With more than 7,000 students, 1,000 employees and 20,000+ alumni, CSUCI is poised to grow in size and distinction, while maintaining one of the most student-focused learning environments in public higher education. Many of our students are the first in their families to attend college and have their lives transformed to benefit themselves, their families and generations to come. Students are provided with immersive, hands on-learning experiences that instills in them the critical thinking, problem-solving, communication, and mathematical skills they need to thrive in today's innovation economy.

BEST COLLEGE FOR
TRANSFER STUDENTS

4th

in the nation by
MONEY magazine

MOST TRANSFORMATIVE
COLLEGE

15th

in the Nation by
MONEY magazine

SOCIAL
MOBILITY INDEX

20th

in the Nation by
CollegeNET

TOP
PUBLIC SCHOOLS

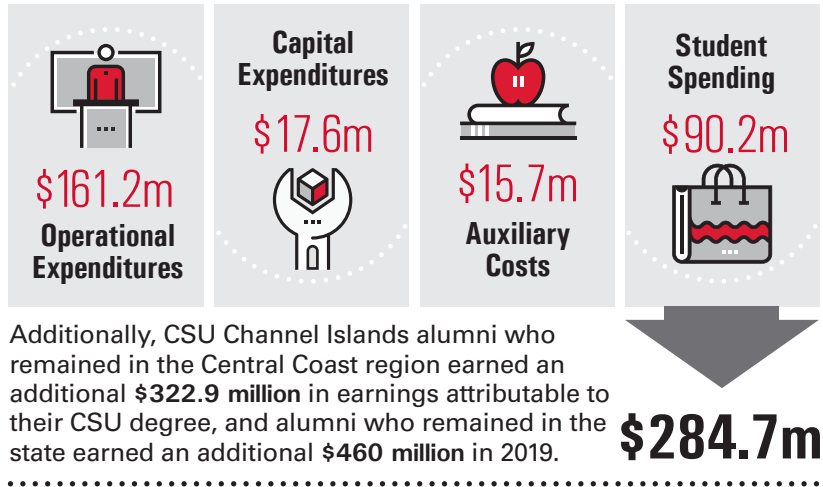
20th

Best College by
U.S. News & World Report



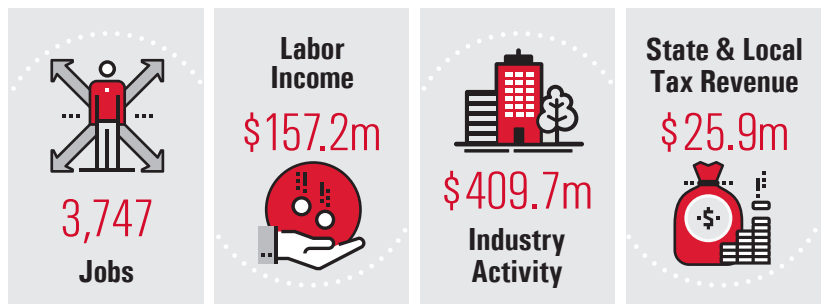
INPUTS:

In the 2018-19 academic year, the CSU Channel Islands campus spent a total of **\$284.7 million**, made up of



REGIONAL OUTPUT:

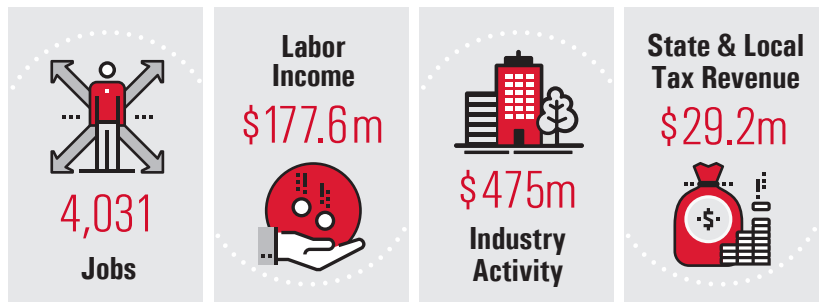
Within the Central Coast, CSU Channel Islands-related activity supported



In addition, CSU Channel Islands alumni in the region supported an additional **1,829 jobs**, **\$97.1 million** in labor income, **\$292.7 million** in industry activity, and **\$22.1 million** in state and local tax revenue.

STATE-LEVEL OUTPUT:

Within California, CSU Channel Islands direct spending supported



CSU Channel Islands alumni who are still in California supported an additional **3,088 jobs**, **\$191.5 million** in labor income, **\$574.1 million** in industry activity, and **\$38.4 million** in state and local tax revenue.

CSU Channel Islands



We know that a CSU Channel Islands education transforms not just students and their families, but entire communities. The data shows just how much we as a society benefit from educated and well-prepared graduates. As CSUCI continues to expand and thrive, this community will also thrive in terms of our economy, the quality of our employees and businesses, and our quality of life."

Interim President Richard Yao, Ph.D.



1 UNIVERSITY DRIVE
CAMARILLO, CALIFORNIA 93012
(805) 437-8400
www.csuci.edu

RETURN ON INVESTMENT:

In 2018-19, the state's investment in CSU Channel Islands (operating and average capital appropriations) totaled **\$84.5 million**.

For every dollar invested
by the state in the campus

\$ 5.62

in statewide
Industry Activity
is generated



When the impact of the enhanced
alumni earnings is included

\$12.42

in statewide
Industry Activity
is generated



IN THE COMMUNITY:



NURSING

More than 250 Nursing students and faculty have assisted with the COVID-19 vaccine rollout in Ventura, Santa Barbara and Los Angeles counties.

Program Chair and Professor of Nursing Lynette Landry, Ph.D., R.N., said she appreciates area hospitals and health agencies who have been great partners to CSUCI's Nursing students, training all of them on how to vaccinate, educate or do health screenings during this extraordinary time. "They amaze me," Landry said. "They're willing to jump right into the fire...they want to contribute. When most of us are afraid to go to the supermarket, there they are, right out on the front lines. I am so proud of them."



MICRO-INTERNSHIPS

A virtual micro-internship program launched during the first months of the pandemic has proved to be so successful, it has continued with even more student participants. The micro-internships, which

are hands-on learning projects with pay, are offered through CSUCI's Martin V. Smith School of Business & Economics. "One way to offer our students a path to professional careers and entrepreneurship is through the connections we build with our small business partners and industry mentors. Having a portfolio before students graduate puts them a step ahead of other graduates," said Associate Professor of Marketing Ekin Pehlivan, Ph.D.



COLLABORATION

A compact microscope co-designed by Physics Lecturer Brian Rasnow, Ph.D. is circling the globe aboard the International Space Station (ISS). When the SpaceX Falcon 9 rocket blasted off from NASA's

Kennedy Space Center in Florida, it carried three Lumascopes in the so-called Dragon cargo capsule. The microscopes were part of a system installed in the ISS where they are being used to research the effect of microgravity on human cells. There are a number of human cell research investigations taking place at any given time on the ISS, including stem cell research, DNA extraction, and the effects of microgravity on the cells of the human heart, to name a few projects. Results could help establish screening measures to predict cardiovascular risk in humans prior to spaceflight, and lead to new treatments for people with heart disease on Earth. "We're glad to be a tiny part of ISS," said Rasnow.