



# Continuous Improvement @ Channel Islands

Jessica Lavariega  
Monforti

JANUARY 19, 2023

# Agenda

Why

Compliance Doesn't Work

Continuous Improvement Framework

Questions

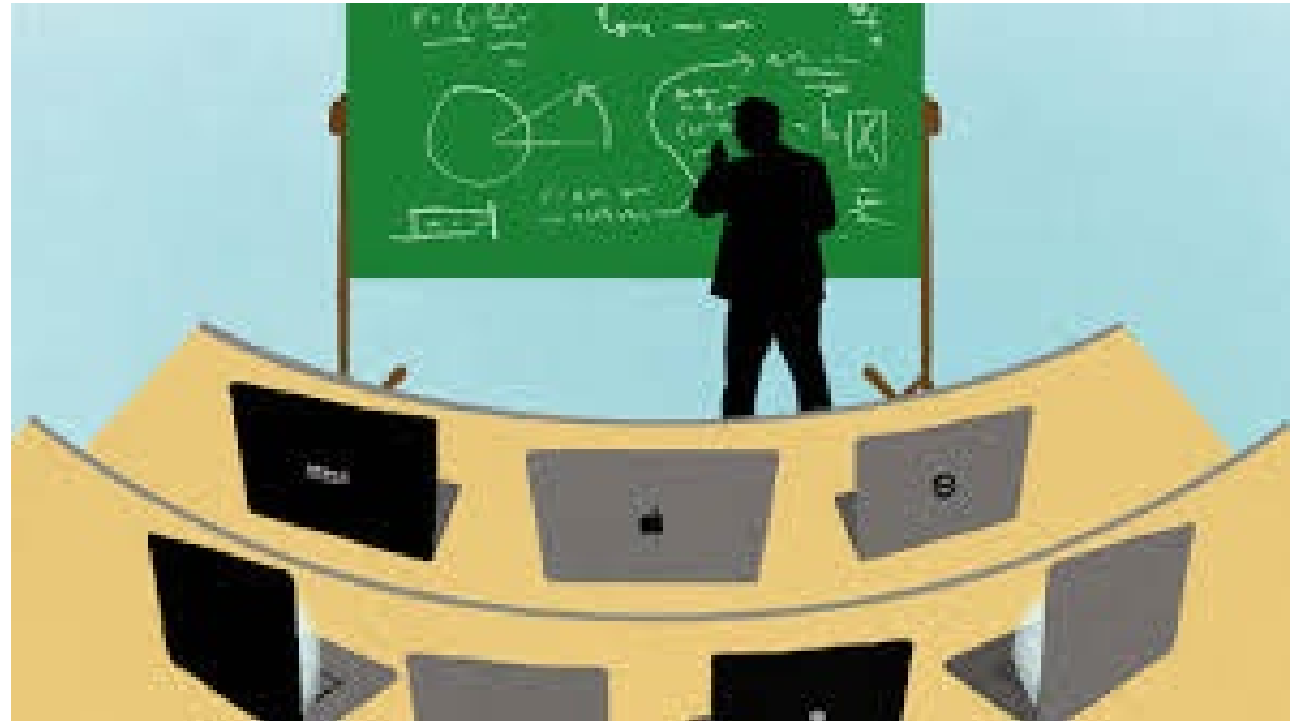
Break

What is WSCUC

What is TPR

Key takeaways

Call to action



## WHY

Placing students at the center of the educational experience, California State University Channel Islands provides undergraduate and graduate education that facilitates learning within and across disciplines through integrative approaches, emphasizes experiential and service learning, and graduates students with multicultural and international perspectives.




Our mission is about students, not about compliance

Primary focus on adherence and violations rather than learning and success.

Results in box-checking, not engagement and discussion – alienates faculty, staff, and students.



## Compliance Framework Doesn't Get the Job Done



*Process improvement = leveraging data (evidence) and primary focus on the findings about the quality of learning that assessment generates.*

Craig Mapp

# Continuous Improvement

Ongoing improvement through  
incremental (over time) and  
breakthrough (all at once)  
improvements as a result of  
implemented changes..

Iterative and designed to identify,  
analyze, and improve existing  
processes or outcomes.

# Closing the Loop

**ARTICULATE**  
what the problem or opportunity is

**GATHER**  
information/data to quantify the extent of the problem

**ASSESS**  
any improvement effort if they are successful or not

**DEFINE**  
what the success metrics are

**EXECUTE**  
your solution into a much larger-scale environment

**ADJUST**  
your solution approach and re-test it again if needed



**TEST**  
each solution in a small-scale project or environment

**TRACK**  
data based on the success metrics

**ANALYZE**  
the aftermath of the experiment

**ASSESS**  
each solution's viability and effectiveness

**REVIEW**  
how the results go against the success metrics

**HIGHLIGHT**  
any issues that appeared during the experiment



# Questions & Break



# What is WSCUC?

Our accreditor

aids institutions in developing and sustaining effective educational programs and assures the educational community and the general public that an accredited institution has met high standards of quality and effectiveness.



WSCUC developed the Thematic Pathway for Reaffirmation, or TPR, as an alternate pathway for reaffirmation for eligible institutions that demonstrate consistent evidence of a healthy fiscal condition, strong student achievement indicators, and sustained quality performance.

Encourages institutions to be creative, to build on processes already in place, and to focus on a limited number of key issues that can be addressed in depth. This process is intended to promote significant engagement and improvement among faculty, staff, and administrators. CSUCI's theme establishes a framework for connecting its mission and priorities with the WSCUC Core Commitments, Standards of Accreditation, and Criteria for Review.



## Brechas por Cerrar/Escaleras por Construir

CSUCI's three priorities: 1) Academic Quality & Student-Centered Infrastructure, 2) Student Services, Support, & Development, and 3) Diversity, Equity, Inclusion, & Accessibility (DEIA) are directly informed by the quantitative and qualitative data collection efforts.

# New 2022 Standards

CSUCI Site Visit: Spring 2024  
ONE YEAR AWAY





## Key takeaways

We assess to honor CSUCI's mission

"WSCUC says" doesn't fit our why

Continuous Improvement Framework being adopted and implemented so we can close the loop!

TPR is underway, have our themes, WSCUC is coming in Spring 2024

A man with dark hair and a beard, wearing a yellow sweater over a white collared shirt, is shown in a thoughtful pose with his hand on his chin and looking upwards and to the left. The image is framed by a thin black border.

## Call to Action

What are you doing to support CSUCI's CI@CI mission?

Is that work connected to assessment, program review, TPR and associated offices?

Are you talking about it with your colleagues regularly? Is it iterative and used to improvement?

See Spring 2023 schedule of events and attend. Bring a friend or two!