



CSU Channel Islands



Welcome to CSUCI!

High School Counselor
Breakfast

October 4, 2019

CSU Channel Islands



AGENDA

1. Welcome
2. Excellence in Academic Preparation (EAP)
3. Housing & Residential Education Services
4. Disability Accommodation & Support Services
5. Break
6. Admission Updates
7. Educational Opportunity Program (EOP)
8. Cal State Apply Updates
9. Learning Communities
10. Campus & Housing Tour (optional)

2015-19 Campus Enrollment



FALL	HEADCOUNT	FTE	% FTE Increase
2015	6167	5448	5.2%
2016	6611	5817	6.8%
2017	7100	6170	6.0%
2018	7095	6272	1.65%
2019	7093	6405	2.12%

Fall 2019 data are as of Census (9.23.19).

Fall 2019 Freshman Enrollment



Stage of Enrollment	Fall 2018	Fall 2019	Difference
Applications Received	11,328	10,433	-895
Admitted	9,101	8,941	-160
Denied	2,189	1,442	-747
Enrolled	970	887	-83

Applicant, Admitted, and Denied data are as of 9.23.19. Enrolled data are as of Census.

Entering Freshmen Top 21 Feeder High Schools



- | | |
|--------------------------|---------------------------------------|
| 1. Oxnard (34) | 12. Saugus (10) |
| 2. Pacifica (29) | 13. Granada Hills (9) |
| 3. Santa Paula (29) | 14. Moorpark (9) |
| 4. Hueneme (21) | 15. Hemet (9) |
| 5. Rancho Campana (19) | 16. Simi Valley (8) |
| 6. Channel Islands (19) | 17. Francis (John H.) Polytechnic (8) |
| 7. Adolfo Camarillo (18) | 18. Canyon (8) |
| 8. Newbury Park (17) | 19. Buena (7) |
| 9. Rio Mesa (12) | 20. El Camino (7) |
| 10. Royal (11) | 21. La Quinta (7) |
| 11. Chatsworth (11) | |

Test Scores / GPA



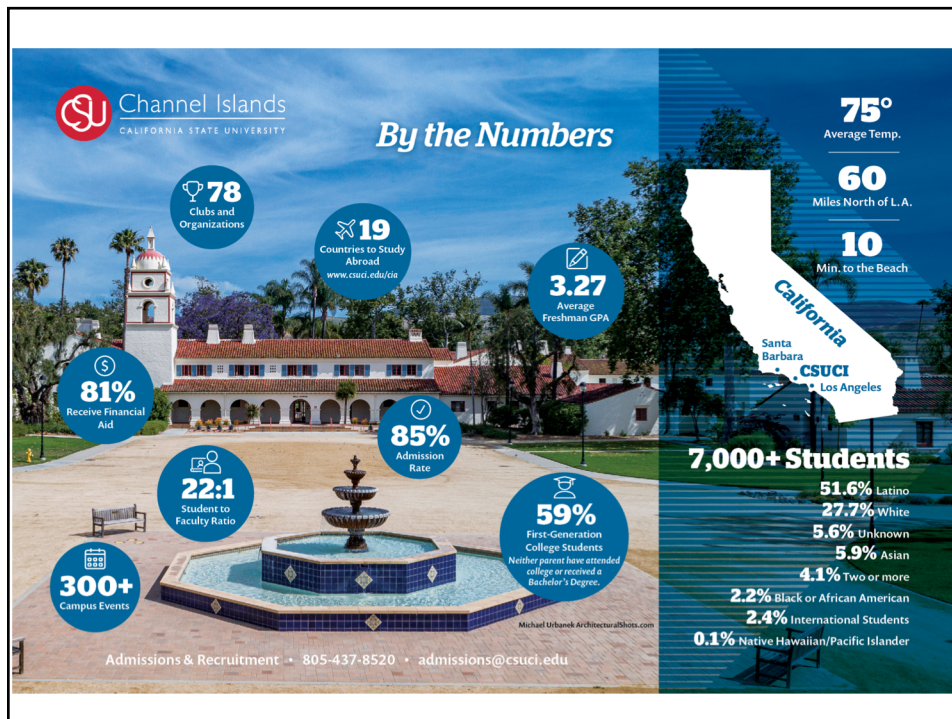
SAT & ACT Test Scores

Mean SAT Verbal	Mean SAT Math	Mean ACT Composite Score
526	507	19

High School GPA

Mean HS GPA
3.27

Based on Fall 2018 Census



Academic Programs

26 undergraduate programs
6 Master's Programs

Most Popular Majors

1. Psychology
2. Business
3. Biology
4. Nursing/Pre-Nursing
5. Health Science



go.csuci.edu/academics



California State
University
CHANNEL
ISLANDS

Impacted Programs

Nursing

- Freshmen are **not** eligible to apply directly to Nursing.
 - Freshman apply to Pre-Nursing.

Mechatronics Engineering

- Applicants must select an alternate major..
- Applicants will be rank ordered according to eligibility index.
- Additional GPA points will be added to students who meet the below criteria:

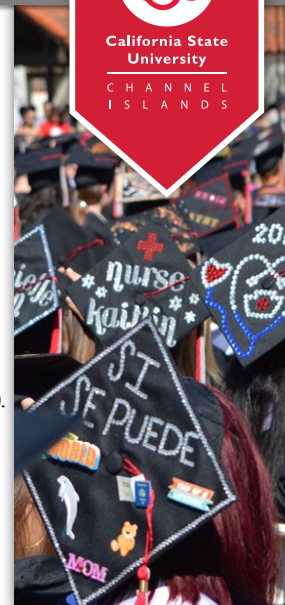
+ .05 GPA points for an applicant's enrollment in a verified engineering academy (e.g., MESA Program, STEM Grant Program, or a CSUCI Partner Schools Program).

+ .10 GPA points for an applicant eligible to enroll in a GE Mathematics/Quantitative Reasoning course appropriate for STEM majors.

+ .10 GPA points for applicants from high schools in the local admission area.



California State
University
CHANNEL
ISLANDS



Mechatronics Engineering Alternate Major Selection

Select an Alternate Program

Mechatronics Engineering (Freshmen Only) at Channel Islands Undergraduate requires you to select an alternate program. If your primary program runs out of space, you will be considered for the alternate program.

Campus Cal State Channel Islands

Source Source

Start Term Start Term

[Reset Filters](#)

PROGRAM NAME	DEGREE TYPE	START TERM	ACADEMIC YEAR	LOCATION
Channel Islands Undergraduate				
+ Undeclared (Freshmen)	OTHER	Fall	2020	Main Campus

☐ I am not interested in an Alternate Program

Selected Alternate Program: -

Save
Cancel

Campus Resources

- EOP & Student Support Services
- Study Abroad & International Programs
- Career Development Center
- Educational Access Center
- Writing Center & Learning Resource Center

- Recreation Center
- Intramural & Sport Clubs
- 70+ Student Clubs & Organizations
- Waterfront Program, CI Boating Center

- 1,600 students live on campus.
- Pool, community kitchens, computer labs
- Learning Communities

www.csuci.edu/student-life/

Campus Recreation



California State
University
CHANNEL
ISLANDS

Recreation Center

- Cardiovascular machines
- Resistance training
- Basketball court
- Free weights
- Fitness classes



Sports (non-NCAA)

- Intramural teams
- Club sports
- Recreation fields



<http://www.csuci.edu/recreation/>

Outdoor Recreation



California State
University
CHANNEL
ISLANDS

Outdoor Adventures

- Hiking day trips
- Overnight camping trips
 - Kern river rafting
 - Santa Barbara rock climbing
 - Santa Rosa Island trips

Waterfront Program

- Sailing
- Kayaking
- Stand Up Paddle Boarding



Financial Resources & Scholarship Information

President's Scholars Program

CSUCI Scholarships (financial need & merit)
Over \$620,000 awarded annually

Financial Literacy Workshops & Resources

Basic Needs and Emergency Intervention Program

<https://www.csuci.edu/basicneeds/>



<http://www.csuci.edu/financialaid/>



Next Steps

Admission Decisions

- Fall 2020 admission acceptance offers to be sent via postal mail along with an Enrollment Guide beginning mid-December.
- Denial decisions will be sent in January. Students will have opportunity to appeal. A majority of admission decisions are reversed due to application input error.

Admitted Dolphin Day (April 4, 2020)

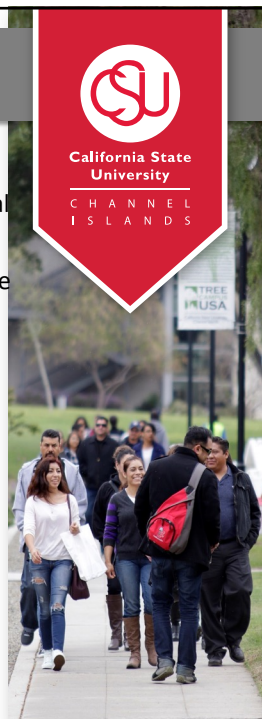
Intent to Enroll Deadline + Orientation Fee (May 1)

- Freshmen: \$175

Final Transcript Deadline (July 13, 2019)

- In-progress transcripts from freshmen are **NOT** required.
- Students must check their myCI regularly for deadlines or missing items required for admission.

<http://www.csuci.edu/visit-campus/>



Counselor Resources

General Resources for Counselors

<https://www.csuci.edu/admissions/coun-educ.htm>

Admitted Freshman Website

<https://www.csuci.edu/admissions/freshman/admitted/index.htm>

Admitted Transfer Student Website

<https://www.csuci.edu/admissions/transfer/admitted-transfer/index.htm>

Denied Freshman Website

<https://www.csuci.edu/admissions/freshman/freshman-appeal.htm>

Denied Transfer Student Website

<https://www.csuci.edu/admissions/transfer/appeal.htm>

<http://www.csuci.edu/visit-campus/>



Office of Admissions



Catherine Villa-Real
Associate Director of Admissions &
Recruitment
catherine.villa-real@csuci.edu
(805) 437-3506

Contact Information

[csuci.edu/admissions/](https://www.csuci.edu/admissions/)
admissions@csuci.edu



Katelynn Ellison
Admission Counselor
katelynn.ellison@csuci.edu
Start Date: October 7th



Cesar Rangel
Admissions Counselor
cesar.rangel@csuci.edu
(805) 437- 3928



Steven Cosgrove
Lead Recruitment Counselor
steven.cosgrove@csuci.edu
(805) 437-3265

Stay Connected:



Student Questions

csuci.edu/admissions/
admissions@csuci.edu
 One University Drive
 Camarillo, CA 93012



Stay Connected:



Visiting Campus

Campus Preview Days
 (select Saturdays)

Weekday Family & Group
Tours/Presentations

Virtual Tour:
<http://www.youvisit.com/tour/csuci>

<http://www.csuci.edu/visit-campus/>

