

**How to Prepare for  
Graduate School:  
*The Graduate School  
Application Process***

---

Presented by:  
Academic Advising Center

# LEARNING OUTCOMES

---

Identify two reasons to attend graduate school.

Summarize how to select and prepare for graduate school entrance exams.

Estimate how far in advance a letter of recommendation should be requested.

List the important things to consider when writing a statement of purpose.

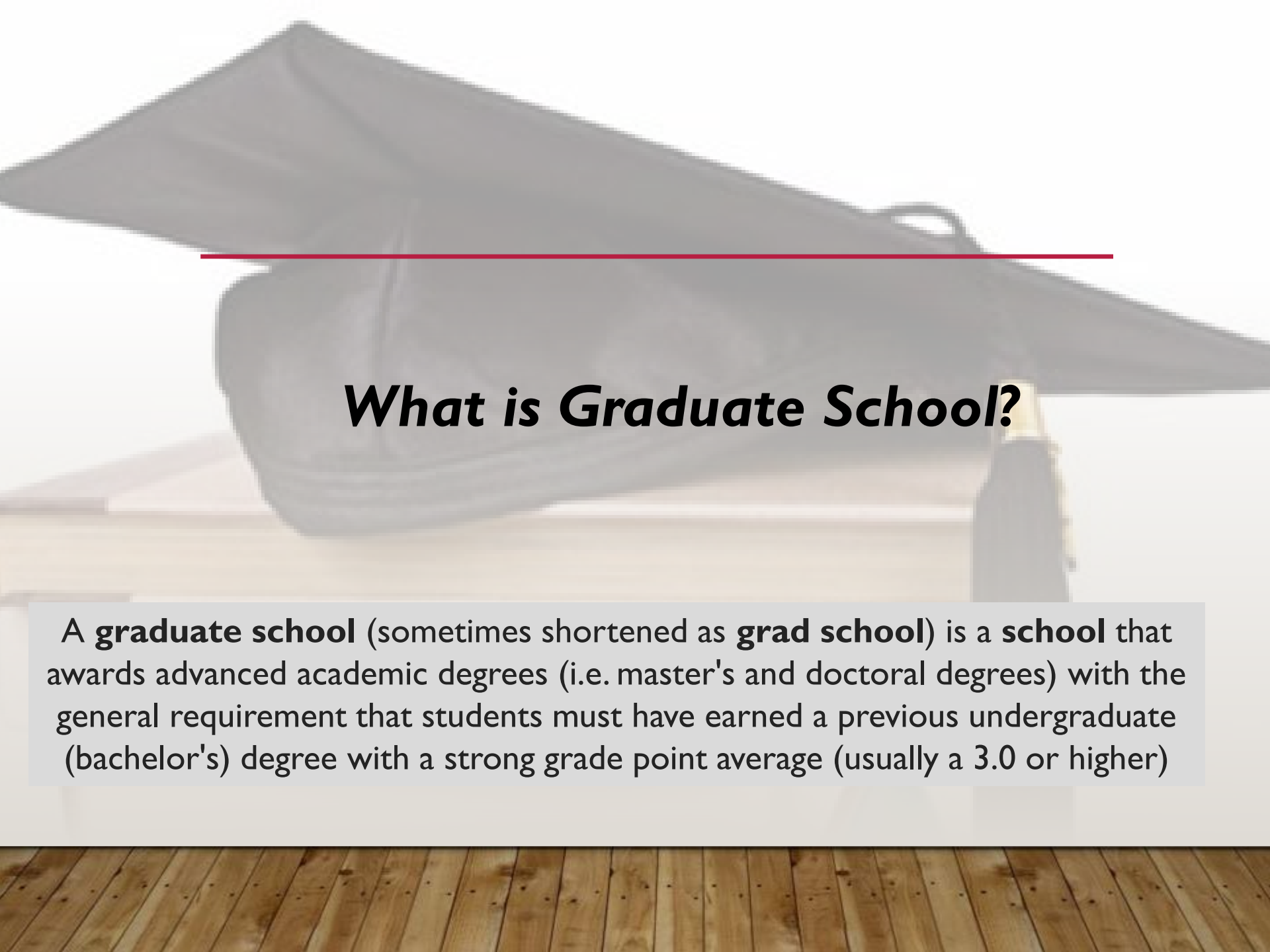
# TODAY'S AGENDA

The background of the slide features a spiral-bound notebook with a silver ring binder. The notebook is open to a page with horizontal lines. At the top of the page, there are labels in multiple languages: "Goals/Notes" in English, "Ziele / Anmerkungen" in German, "Objectifs / Notes" in French, "Obiettivi / Note" in Italian, and "Objetos / Notas" in Spanish. A silver pen with a black grip is resting on the right side of the notebook. The notebook is placed on a wooden floor with a light brown finish. A red horizontal line is drawn across the page, positioned above the first bullet point.

- Graduate School preparation
- Graduate School Resources

# *Questions to assist you in thinking about Graduate School*

- 1) Why do you want to attend graduate school?*
- 2) How will this degree align with your career?*



---

## ***What is Graduate School?***

A **graduate school** (sometimes shortened as **grad school**) is a **school** that awards advanced academic degrees (i.e. master's and doctoral degrees) with the general requirement that students must have earned a previous undergraduate (bachelor's) degree with a strong grade point average (usually a 3.0 or higher)



# HOW YOU CAN PREPARE:

---



- Talk with professors to learn about options and opportunities
- Research careers and job descriptions
  - Career Center
- Job shadow / informational interview with professionals in your field of interest
- Visit websites of professional associations
- Intern and work in areas of interest

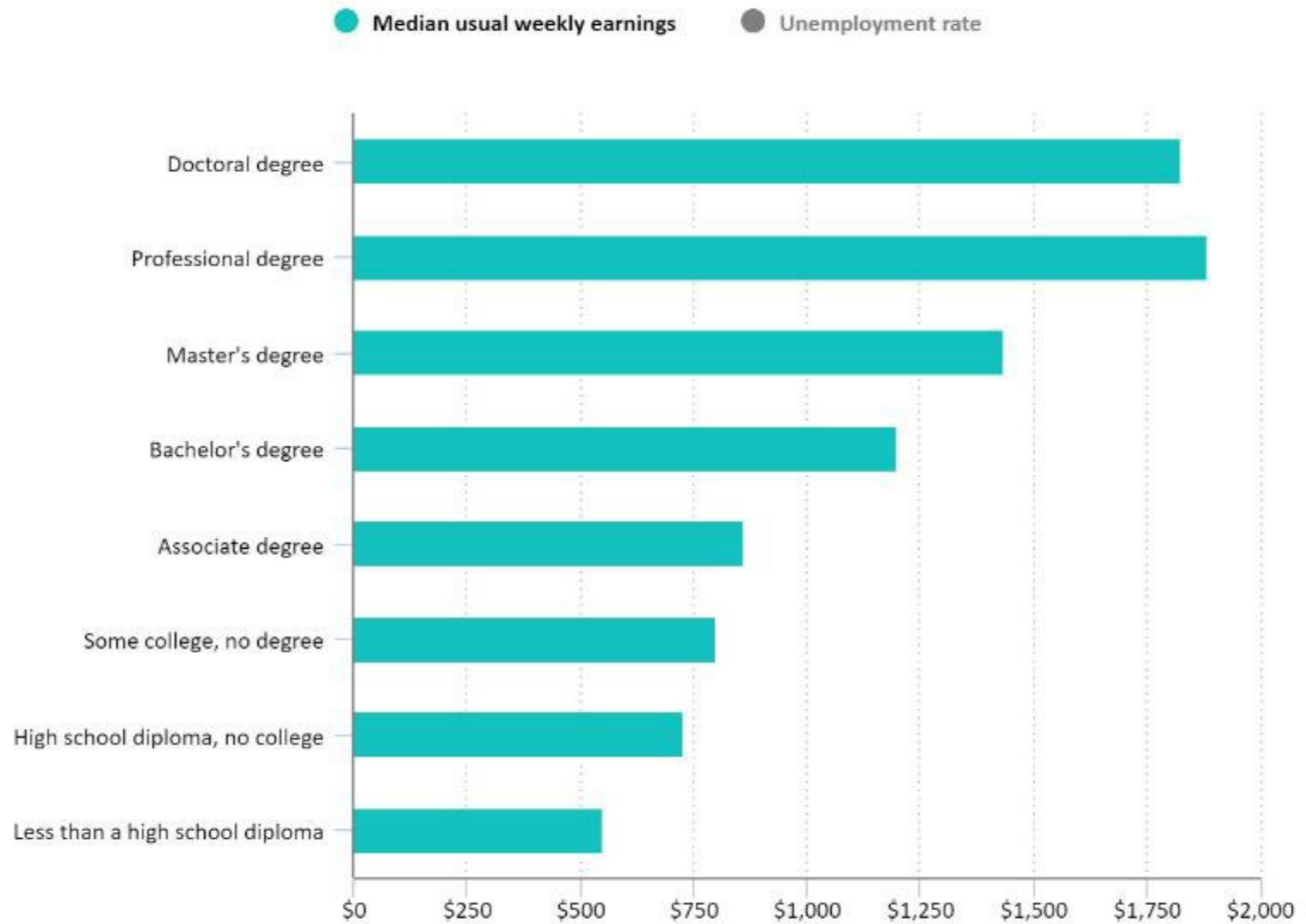
# ***WHY GRADUATE SCHOOL?***

---



# EDUCATION PAYS

Median weekly earnings and unemployment rate by educational attainment, 2018



Click legend items to change data display. Hover over chart to view data.

Note: Data are for persons age 25 and over. Earnings are for full-time wage and salary workers.

Source: U.S. Bureau of Labor Statistics, Current Population Survey.





# GRAD SCHOOL Application Timeline

by Academical.

the smart way



**research programs**  
decide where  
you're applying



**gain experience**  
in research & related  
areas



**study** for the GRE  
and TOEFL



write unique  
**statements of  
purpose**



take necessary  
**exams**



Decide on **recommenders**  
and guide them on  
writing your letters



**perfect your CV**  
and application  
materials



submit your  
applications  
**before the deadline**



wait for your  
**acceptance  
letter**



Academical.  
[howtogetintograduateschool.com](http://howtogetintograduateschool.com)

Success

# Research

CSU degrees <http://degrees.Calstate.Edu>

UC degrees <http://graduate.Universityofcalifornia.Edu/admissions/degree-search>

Petersons guide <https://www.Petersons.Com>

U.S. News-beyond college <http://www.Usnews.Com/education>

Graduate school guide <http://www.Graduateguide.Com>

Gradschools.Com <http://www.Gradschools.Com>

Gradsourc.Com <http://www.Gradsourc.Com>



# ***Research Programs***

- Select programs and schools of interests
- Find out about pre-requisites
- Application requirements
- Should start around February-July of the previous year you plan on starting your program  
(Research Spring to be admitted for Fall)



# APPLICATION REQUIREMENTS

(VARY BY SCHOOL/PROGRAM):

---



# APPLICATION REQUIREMENTS (VARY BY SCHOOL/PROGRAM)

---

- Application
- GPA Requirements
- Standardized Test
- Prerequisites
- Personal Statement
- Letters of Recommendation
- Professional Résumé / CV
- Interview





# APPLICATION

---



- *Specifically follow the directions of the application.*
- *Indicate N/A (Not Applicable) for any blank that does not apply to you.*
- *Start applying early*
- *Fees vary by program; there may be fee waivers*
- *Submit application early*
  - *contact schools to be sure your application has been received*

# GPA REQUIREMENTS

---

- The GPA is one of the many indicators of how well you perform your job as a graduate student
- Masters
  - 3.0 or 3.3 GPA is typically required
- Doctoral programs
  - 3.3 or 3.5 is typically required
- GPA calculations will vary by program

# PREREQUISITE COURSES

---

- *Find out which pre-reqs are required*
- *How many have you taken/ need?*
- *Are community college pre-reqs accepted?*
- *Does your program need a # of volunteer hours or full-time experience?*

# RÉSUMÉ / CV

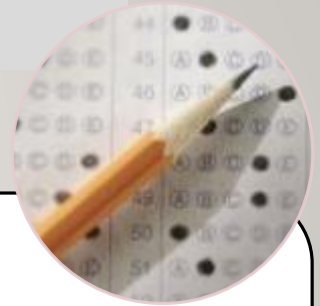
---

Make sure to ask if the school needs a CV or a resume

Must reflect work related to your academic pursuits

Visit CI's Career Development Resource Center for assistance

# Entrance Exams



- **GRE, GMAT, LSAT, or MCAT**
  - Depends on graduate program admissions requirement
- Study for exam (May-August)  
(80-120 hours of test prep)
- Buy a test prep book and register for a prep course
- Pay and Schedule exam  
(3 weeks – 2 months prior to exam day for best date & location)
- Take a free practice test [www.kaplan.com](http://www.kaplan.com) or [www.ets.org](http://www.ets.org)
- Take the Exam (July-September)
- Update on Exams



# ***Letters of Recommendation***

- Check with each school to check how many are required
- Contact professional references (professors, supervisors, and mentors)
- Provide summary, transcripts, and resume
- Request letters at least 6-8 weeks in advance of the deadline. Provide with soft deadline.
- Obtain instructions on how recommendations will be submitted to campus



# ***Statement of Purpose/ Personal Statement***

- Research writing prompt & pay attention to details
- Write rough draft (summer)  
(Never too early to start)
- Reviewed & edited by friends, professionals and faculty (fall)  
\*\* Graduate Writing Studio consultant (FREE)
- Final version



# ***ATTEND ANNUAL PROGRAMS AND EVENTS AT CSUCI***

---

**Graduate School Workshops**

**Graduate School Night Panel**

**Graduate & Professional School Fair**

**Pre-Doctoral Information Sessions**

# Submit Your Application

---

- October – January (application period)
- Submit application at least 1-2 weeks early
- Interviews (March-May)\*

\*Timeline is based upon fall admission and varies by school and program\*

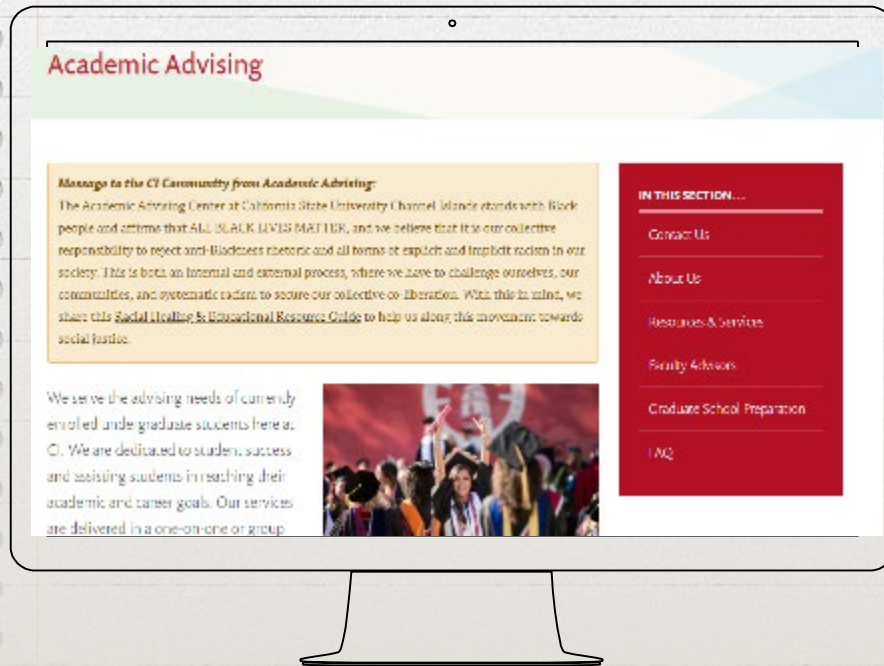


# Interviews

- Types of Interviews
  - Closed
  - Open
  - I-I
  - Panel
- Length
- Sample & mock interviews
- Follow up with *Thank You* note





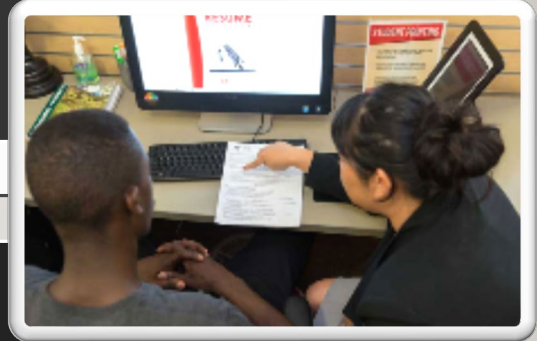


**Visit our Graduate School Preparation website to stay up to date with events, workshops, and more!**

[www.csuci.edu/gsc](http://www.csuci.edu/gsc)

# GRADUATE SCHOOL SUPPORT

Graduate School Counseling



Career Center

Test Preparation Books



Graduate School Handbook