



# Disqualification Options



# Agenda

- Understanding why you were disqualified
- Appeal Process
- Reinstatement Process
- Open University



## Other Topics:

- GPA Calculator
- Repeat Policy
- Examples of appeals



# Academic Disqualification

When a student's CI and/or Cumulative GPA falls below the required GPA for their current academic standing after being previously on Academic Notice

## GPA Required:

Freshmen (0-29 units)	1.5
Sophomore (30-59 units)	1.7
Junior (60-89 units)	1.85
Senior (90+ units)	1.95

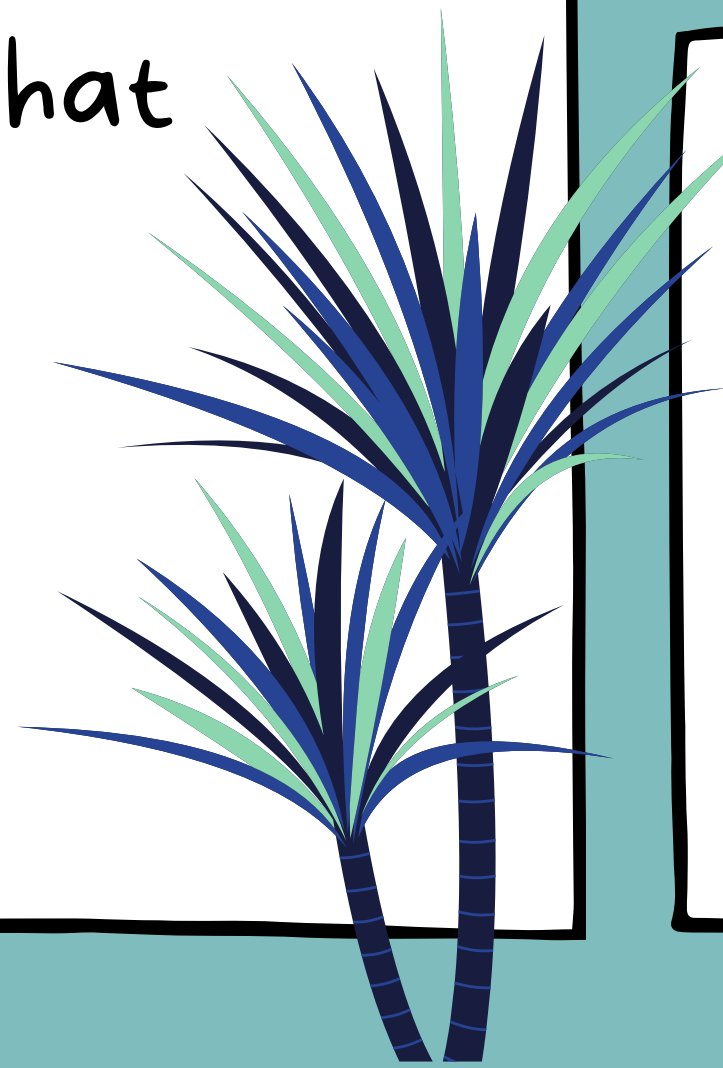
## Note:

Students could have been in good academic standing the semester prior to being disqualified, but had been on academic notice before



# Appeal Process

Applies to students that had exceptional circumstances outside of their control that affected their academics



## To Do List..

- Write Appeal Letter
- Submit Documentation

Deadline to Appeal:  
Depends on semester.  
Students will be emailed the deadline

# Appeal Letter

## What to include:

- The circumstances that have contributed to your academic performance, including how they affected your schoolwork.
- How circumstances have changed since you were disqualified, and the steps you have taken to resolve the difficulties in your academic or personal life.
- What your academic plan will be upon reinstatement to ensure success (i.e. services you will seek, study methods/actions you will follow, etc.).

## Important Notes:

Be detailed

Have a clear plan

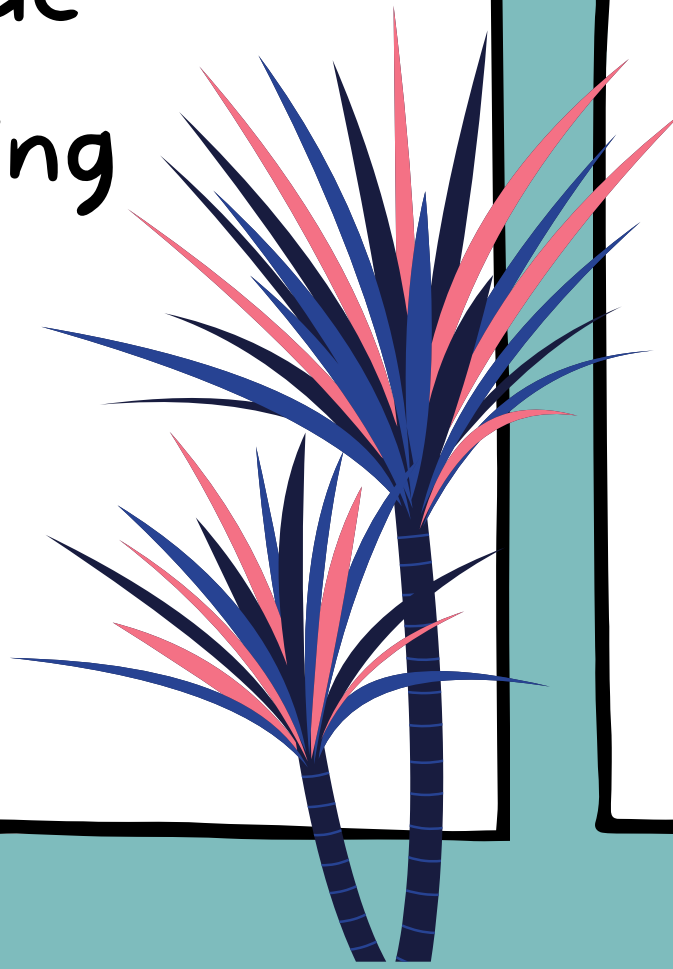
Include documentation if you have it

## Where to Submit:

Disqualification Appeal Form

# Grade Appeal

If one or more of your grades are incorrect you can do a grade appeal by contacting your instructor

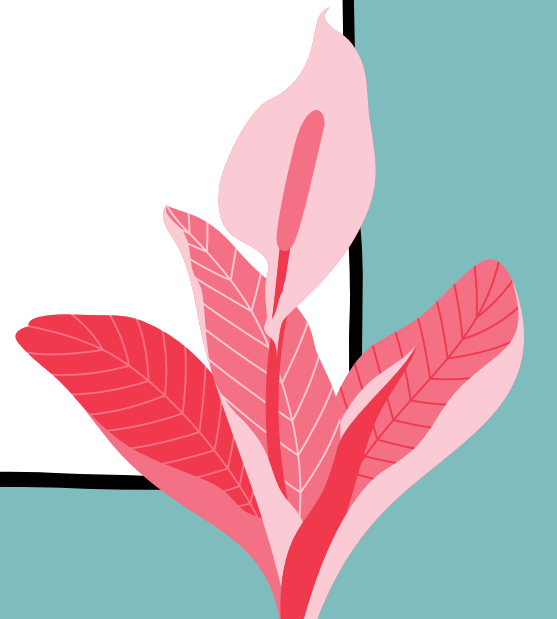


## Note:

If grade changes academic standing, you will be reinstated/ disqualification will be removed

## Deadline:

7th week of following semester

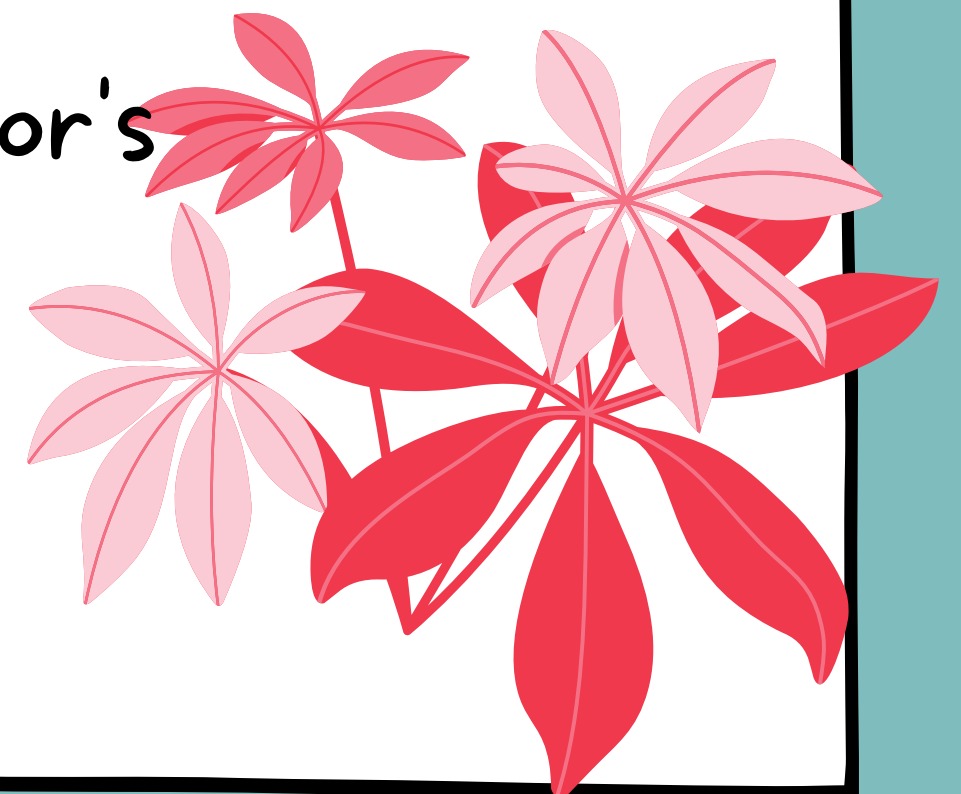




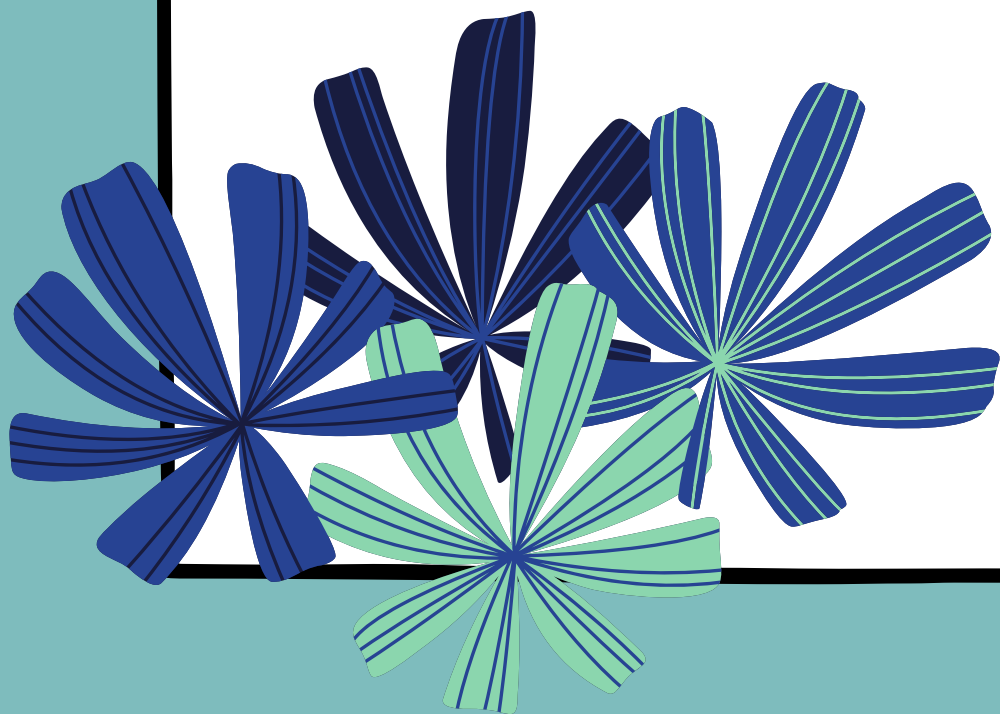
# Types of Documentation:

Depends on your situation, here are some examples

- If someone passed away can include memorial card
- If you were in a car accident can include pictures of car crash
- If you or family member is sick can include doctor's note
- You can still submit an appeal if you don't have documentation



What if my appeal  
gets denied?





# Reinstatement

To be able to return to CI as a continuing student, students must demonstrate that they can do well in school by taking classes through Open University or at a Community College

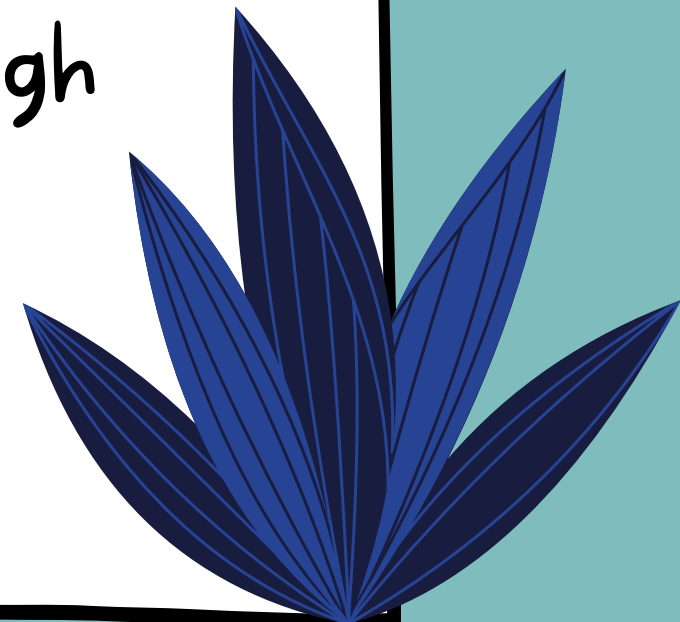


## Goal:

- Raise GPA back up to a 2.00 or as close as possible

## Plan:

- Take classes through Open U
- Take classes at Community College



# Open University.

- Fill out Intent to Enroll
  - Available in August
- Fee is \$270 per unit
  - Not eligible for Financial Aid
  - Payment Plan available for Fall/Spring
- 3 weeks to add classes
  - have to wait to add until 1st day of classes

## Note:

You are taking the exact same classes as everyone else , you are just enrolling in them differently and paying a different fee

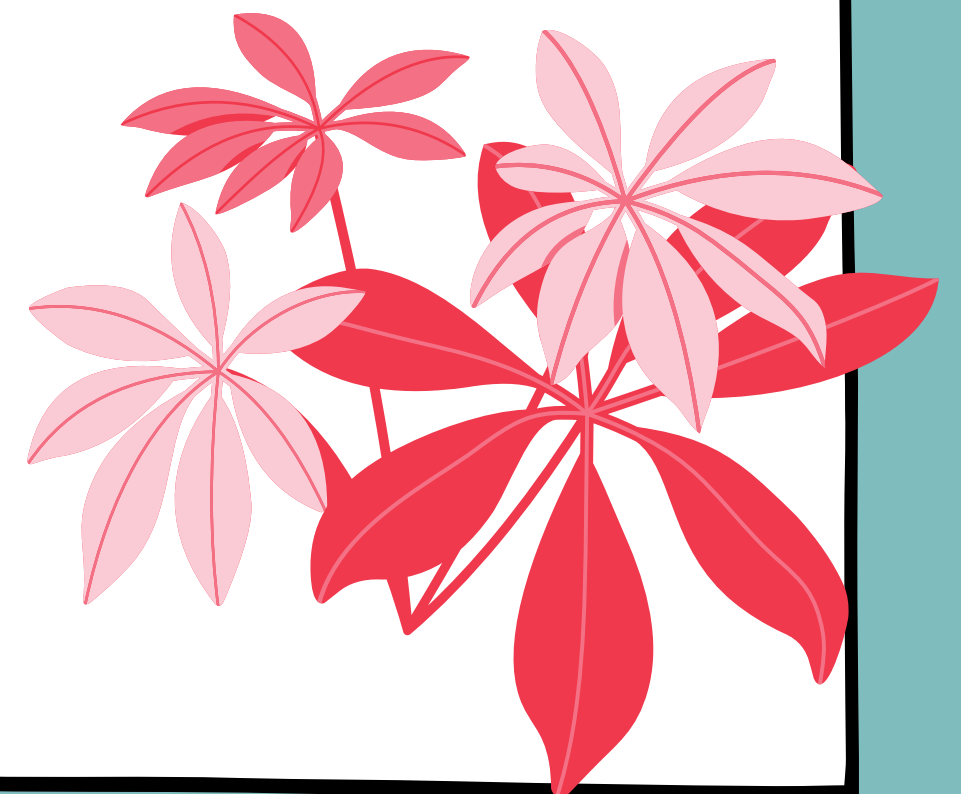
## Payment Info:

Have to pay fees in full within 48 hours of enrolling in courses



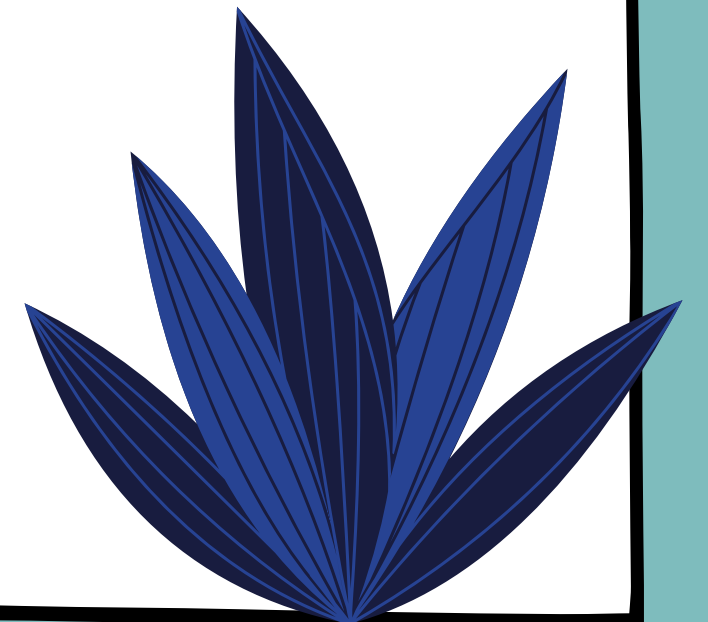
# How long do I attend Open U:

- Until you're at or near a 2.0 GPA
- Things to consider:
  - What is your current GPA
  - Will you be repeating classes
  - How many classes can you afford
  - How many classes are manageable for you to pass with A's and B's



# Can't afford Open U:

- Take a break from school
  - work, save money and attend in future
- Attend your community college in meantime
  - can take any missing lower division requirements (100-200 level)
- Can consider transferring to another school



# I raised my GPA, now what?

- Submit a Petition for Reinstatement
  - attach documentation of hardship
  - attach letter addressed to Appeals Board (see next slide)
  - schedule appointment with advisor to complete re-entry form

## Note:

- Students with a 2.0 GPA automatically reinstated;
- Students below 2.0 get reviewed by Appeal Committee

## Deadline:

July 1st for Fall  
Dec. 1st for Spring



# Letter to Appeals Board

- Why did you receive "D, F, WU" grades in semesters at CI?
- What has changed since then?
- How have you improved academically or personally since being disqualified?
- What is your academic plan upon reinstatement?
- How do you plan to be successful? -
- What resources will you utilize?

## Important Notes:

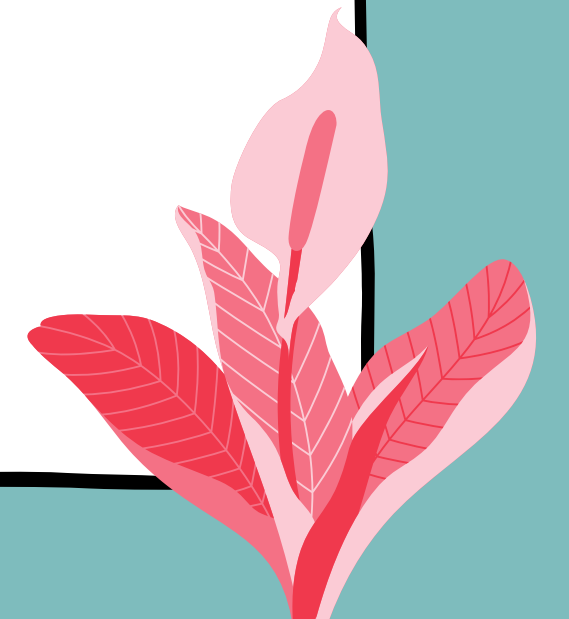
Be detailed

Have a clear plan

Include documentation if you have it

## Where to Submit:

Petition for Reinstatement  
Form





# GPA Calculator

Tool to help you determine how many classes you need to take to raise your GPA

Take the guesswork out. Add your current records... [Sign in to myCI](#)

### Initial GPA and Unit Settings

Use this calculator to estimate the outcome of this semester's grades on your overall campus GPA.

Desired GPA e.g. 2.00	Current GPA e.g. 1.75
Graded Attempted Units e.g. 15	Graded Units Enrolled in Current Semester e.g. 12

Past semesters only.



## Repeat/Grade Forgiveness Policy:

- Any course with grade of C- or lower, or WU or IC, or NC, may be repeated

F

The better of the two grades will be factored into the GPA

A

## Note:

- Only one repeat allowed per course
- Grade forgiveness applies only to courses taken and repeated at CSUCI- up to 16 units
- Additional 12 units may be repeated, but grades will not be replaced



# Reviewing your Academic Record

**Academics**

[Search](#)  
[Plan](#)  
[Enroll](#)  
[My Academics](#)

Deadlines URL

**This Week's Schedule**

	Class	Schedule
	PAMU 100-01 LEC (3917)	MoWe 12:00PM - 1:15PM NAPA 1123
	PSY 310-01 LEC (3703)	Mo 9:00AM - 11:50AM DEL NORTE 1535
	PSY 315-01 LEC (3728)	TuTh 6:00PM - 7:15PM DEL NORTE 1535
	PSY 317-01 LEC (3729)	MoWe 6:00PM - 7:15PM DEL NORTE 1500
	PSY 346-03 LEC (3738)	TuTh 7:30PM - 8:45PM DEL NORTE 1535

other academic... >>

weekly sched

**My Academics**

**Academic Requirements** [View my advisement report](#)

**What-If Report** [Create a what-if scenario](#)

**Transfer Credit** [View my transfer credit report](#)

**Course History** [View my course history](#)

**Transcript** [View my unofficial transcript](#)

**My Program:**

**Current Academic Objective**

Career:	Undergraduate	Fal
Program:	Undergraduate	Fal
Plan:	BA: Psychology	Fal

**Graduation Status:** Not Applied

**Current Academic Summary**

Last Term Registered:	Spring 2015
Academic Standing:	Good Standing
Overall GPA:	2.772
CI GPA:	2.724

[View my Advisor Notes](#)

# Reviewing your Academic Record

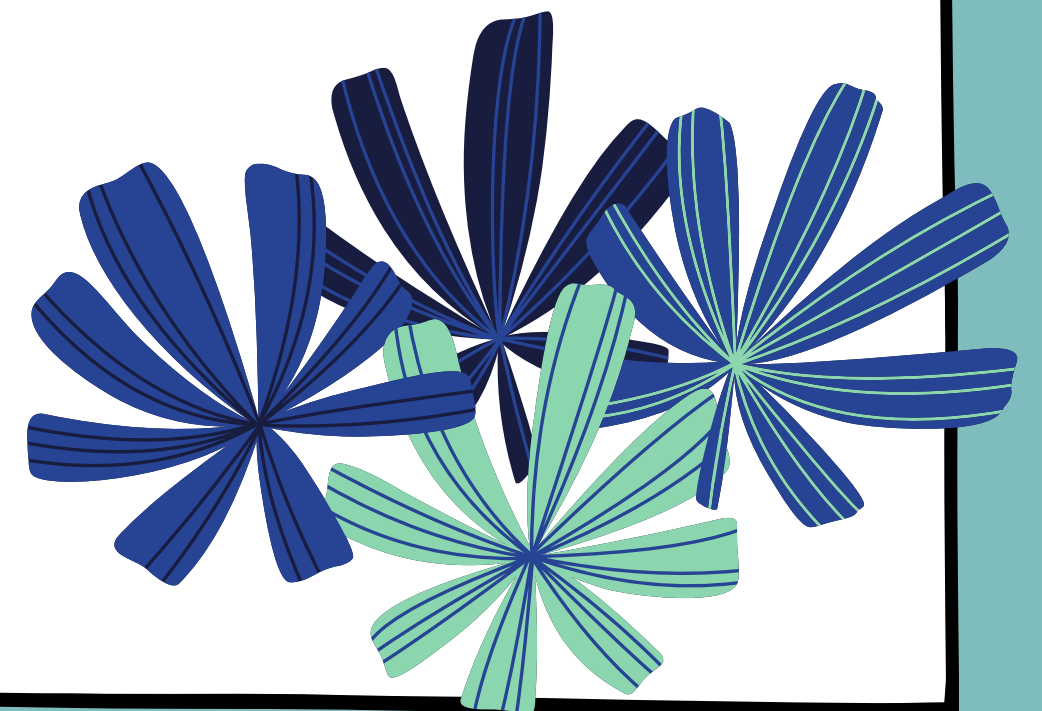
Course	Description	Term	Grade	Units	GPA Points	Repeat Code
ACCT 210	Financial Accounting	Fall 2017	B	3.00	9.000	
ACCT 220	Managerial Accounting	Fall 2017	B	3.00	9.000	
ACCT 300	Applied Managerial Accounting	Spring 2019	WU	3.00		
ANTH 104	Intro To Bioanthropology	Fall 2017	C	4.00	8.000	
BUS 110	Business Law	Fall 2017	A	3.00	12.000	
BUS 320	Business Operations	Fall 2018	B-	3.00	8.100	
BUS 349	History Of Business/Economics	Fall 2017	C-	3.00	5.100	
COMM 101	Public Speaking	Fall 2017	A	3.00	12.000	
COMP 101	Computer Literacy	Fall 2017	B	3.00	9.000	
ECON 110	Principles Of Microeconomics	Fall 2017	B	3.00	9.000	
ECON 111	Principles Of Macroeconomics	Fall 2017	200	3.00	6.000	
ECON 310	Intermediate Microeconomics	Fall 2018	D+	3.00	3.900	Included in Statistics
ECON 310	Intermediate Microeconomics	Spring 2019	WU	3.00		Excluded from Statistics
ECON 311	Intermediate Macroeconomics	Spring 2018	F	3.00		Excluded from Statistics
ECON 311	Intermediate Macroeconomics	Spring 2019	F	3.00		Included in Statistics
ENGL 107	Advanced Composition/Rhetoric	Fall 2017	B	3.00	9.000	
ENGL 330	Interdisciplinary Writing	Spring 2019	F	3.00		
FIN 300	Business Finance	Fall 2018	WU	3.00		Excluded from Statistics
FIN 300	Business Finance	Spring 2019	F	3.00		Included in Statistics

# Other things to know

## Catalog Rights

- If you've attended CI continuously through Open University (at least 1 semester per year), you maintain catalog rights
- If not maintained, you will follow new catalog rights for GE, major, graduation, etc.
  - Petition for Exception

2nd Disqualification – cannot return to CI



# Need an appointment?

Call the Academic Advising Office at:

- 805-437-8571

Email us at [advisement@csuci.edu](mailto:advisement@csuci.edu)

Attend Drop-In advising M-F from 1:30-3:30pm

- quick 5-10 minute chat only

