

The CSU Channel Islands University Park is a regional educational and recreation area owned and operated by California State University Channel Islands (CI). As an extension of the academic campus, the Park embraces the mission, values and objectives of CI. The purpose of the Park is to provide educational and recreational opportunities open to all through habitat restoration activities, maintenance of open spaces, and development of ecological, cultural, and recreational facilities and programs.

Site and History

Description of the Park and Surrounding Area: The Park is a 367-acre parcel located to the north of the academic campus. The topography of the Park is characteristic of the foothills of the Santa Monica Mountains. The Park is located on the east bank of Calleguas Creek and downstream from its confluence with Conejo Creek. Calleguas Creek is confined by flood control levees to protect agricultural lands from flooding events. Wetland habitats have developed on the upslope side of the left bank levee. The southern portions of the Park contain the ruins of an old dairy and fill material that was brought onsite for a proposed federal prison. This fill area now contains a paved model airplane runway and unpaved parking lot.

The northern portion of the Park contains a permanent pond. Three settling ponds are owned and operated by Camrosa Water District. Immediately upslope from the Camrosa ponds is an approximate 11.7-acre Alkaline Meadow wetland surrounded by approximately 10 acres of riparian scrub and forest habitat. The Park itself does not contain any infrastructure improvements.

Over the past twenty years, significant development has occurred in the area. Northeast of the park on Lewis Road, Casa Pacifica broke ground in 1993, followed by other facilities, Casa de Esperanza, Las Posadas and Villa Calleguas. To the east, in 2000, the 2,300-acre first phase of Dos Vientos Ranch (1,500 homes) project broke ground. That project is now on its final phase nearing completion. Finally, a first phase of University Glen was developed southwest of the park. It is currently a residential community of 658 housing units (single-family homes, townhomes and apartments) and is situated on CSU Channel Islands land.

Park History: The land was conveyed to the University by the County of Ventura in 2009. Prior to acquisition, the County had acquired three parcels of land and had begun work to develop a golf course and amphitheater. An Environmental Impact Report for the project was released in September of 1997 but the project was later abandoned. In October of 1986 the County received a proposal to create a model airplane park on the fill area in the southern valley. Beginning in June of 1987 the County entered into an annual license agreement with the Condors Club with provision to terminate given 15 days prior notice. This agreement was renewed through 1997. In 1997 an effort was made by the County to relocate the club. The Club currently has property in the form of storage units located on site. In addition, documents indicate that a hobby boating club, the Camarillo Pond Rats, began using the Park pond prior to 1997 for club activities. The University has not entered into agreements with either of these clubs.

CSU Channel Islands Ownership

Three parcels of land comprised the land conveyed by the County to the CSU and now referred to as the Park:

- A 236-acre parcel originally acquired from the U.S. National Park Service, through the Federal Lands to Parks Program, required submission of a Program of Utilization to the National Park Service.
- A 43-acre parcel acquired from the Operating Engineers Funds, Inc., required payment of \$150,000 to the County as reimbursement for expenditures associated with acquisition of the parcel.
- A 91-acre surplus federal property parcel was purchased by the County with funds from the Urban Open-Space and Recreation Grant Program; the parcel was transferred to the CSU on the condition that the CSU assumed the obligations as imposed by the grant program.

Early CSU Channel Islands Planning

In January of 2010, an 11-member Park Master Plan committee was convened. Membership included campus staff, students and community members. The charge to the committee was to discuss and make recommendations for a Master Plan, and to develop operational procedures, processes and fees related to use of the property.

In July of 2010, a Rivers, Trails, and Conservation Assistance Program application was submitted to the National Park Service for assistance with park planning. Assistance was granted and Planning Framework documents were presented at the November 2011 meeting. Ambitious plans to complete outreach activities by May of 2012 began in February of 2012 with plans to complete a draft of the Master Plan by August 2012. With the recognition that additional due diligence in planning is needed, the University has taken steps to engage a consulting firm to continue master planning work for the Park.

Management

The Park serves as a community and University amenity and is currently open daily, year-round, during daylight hours for passive recreational uses. In addition, the park is in use for academic purposes.

Development of the Park for Current Use: Infrastructure and facilities are minimal. An airstrip exists in the south meadow with a shade structure, benches, portable toilets and an unpaved parking area. Dirt roads exist as remnants of farming operations and as a route to Camrosa Water District ponds. Fences have been erected around existing structures and planning and implementation is ongoing for further safety measures. A parking program has been implemented. The Police Department oversees the Park use. The campus' Operations Department is responsible for maintaining roads, brush clearance, collection of garbage and servicing of the portable toilets.

Park Management Issues: Two fires have been started by model planes crashing in the Park (July 2011 and July 2012). The State Fire Marshal prohibited the flying of motorized model flying planes following a fire on the site in July 2012. Vandalism and graffiti is evident in the Park. Trespassing is a problem at night as well as occasional dumping on the property. In addition, prior to July of 2012, a hobby boating group, the Camarillo Pond Rats, had been using the enclosed pond in the northern portion of the Park. The University maintains an easement agreement with Camrosa Water District's for the same pond for use as part of its water treatment system. Access issues both through the Park and to the pond are currently under review.

Special Use Activity of the Park: A proposal from the Condors Club was received for flying gliders. As a public amenity, temporary glider activity shall be open to the public through the end of the current academic year to June 30, 2013 and completion of Phase One planning. A specific set of rules and guidelines (including a use fee) has been developed for this activity.

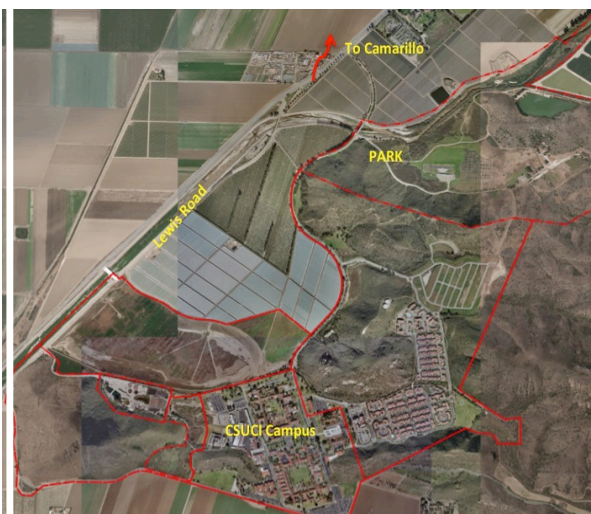
Capital and Operating Budgets: Although no special funding is available for the Park, a modest budget has been created and funding allocated for fiscal year 2012/2013. The University's department of Operations, Planning & Construction has been budgeted a small, one-time operating fund of \$20,000 from the General Fund and one-time funds of \$60,000 have been allocated to mitigate safety issues. The University's Police department has been budgeted one-time General Funds of \$45,000 for police operations. The Parking Services department will cover operating expenses through parking fees collected.

Planning Activities

Short-term Master Plan Goals (phase one): Services of a consultant will be used to complete community outreach and assess environmental issues. The target date for completion of this phase is June 30, 2013.

Long-term Master Plan: Based on phase one outcomes, formal planning will continue as resources allow to complete the Park Master Plan.

CSU CHANNEL ISLANDS



UNIVERSITY PARK FLY ZONE

