

# CSU CHANNEL ISLANDS WELCOME HANDBOOK

FOR F-1 INTERNATIONAL STUDENTS





## TABLE OF CONTENTS

International Programs .....	2
Pre-departure and arrival information .....	3
Applying for a visa .....	4
F-1 Visa, I-94 & I-20 .....	5
SEVIS .....	6
Arrival to U.S. and transportation to campus .....	7
Orientation .....	8
Housing Accommodations .....	9
Health Insurance and Health Center .....	10
Banking .....	11
Weather .....	12
Public Transportation .....	13
Purchasing a Car .....	14
Necessities .....	15

## INTERNATIONAL PROGRAMS

Welcome to California State University Channel Islands (CI). The International Programs (IP) mission is to facilitate the exchange of intercultural experiences by welcoming international students to US culture, and by providing opportunities for experiential learning in a foreign environment to US students, who integrate their international experience into the Channel Islands campus upon their return, so as to facilitate further cultural exchange.

The International Programs office achieves this mission through:

- Recruitment of international students to our Graduate, Undergraduate, and Semester programs
- Hosting events to provide information regarding orientation, visa regulations, campus resources and extra-curricular activities
- Study Abroad Program through CSU IP to outgoing universities
- Exchange programs through partner universities

The mission of International Programs provides the multicultural and international perspectives promised by the mission statement of California State University Channel Islands.

## CONTACT INFORMATION

Should you need assistance at any point before, during or after your arrival in the USA, please do not hesitate to contact any one of the following individuals. We are happy to assist in any way we can.

Your primary contacts for your program are:

International Programs  
206I Sage Hall  
One University Drive  
California State University Channel Islands  
Camarillo, CA 93012-8599, USA



International Programs General Office Contact	international@csuci.edu	(805) 437-3107
Mayumi Kowta, Director	mayumi.kowta@csuci.edu	(805) 437-3107
Scott Trevino, Assistant Director	scott.trevino@csuci.edu	(805) 437-3935
Edith Ramos, International Programs Coordinator	edith.ramos@csuci.edu	(805) 437-3107

## PRE-DEPARTURE & ARRIVAL INFORMATION

### THINGS TO DO BEFORE YOU DEPART:

- Check emails often
- Obtain I-20
- Obtain Visa
- Make flight reservations:
  - Please be sure to arrive in time for the mandatory orientation which will be held before the semester begins. The date of orientation is listed on your admission letter. We recommend making plans early, the cost of flights is unpredictable so we recommend shopping around.
- Research on-campus and off-campus housing (including deadlines)
  - You will not be able to register for on campus housing until the housing application is open. You will need your myCI portal account information, you will receive the portal account information via email shortly after you submit your application to the university.
  - See page 9-10 for more information regarding housing
- Purchase and inform yourself about health insurance. Insurance policy must be purchased from [www.jcbins.com](http://www.jcbins.com).
- Research the city of Camarillo including:
  - Public transportation
  - Local restaurants
  - Location of campus in the city
- Follow CI related social media accounts to learn more about different events and happenings on campus. (Listed below are a couple Instagram accounts to get you started):

@ci_studyabroad	@internationalcsucistudents
@ci_basicneeds	@csucialumni
@csuci	@ci_tutoring
@csuci_rec	@csuci_rha
@csuci_guide	@ci_asi
@csucitps	@eucsuci
@csuci_mdc	



### THINGS TO DO UPON ARRIVAL:

International Programs will assist you with these tasks during your mandatory orientation.

- The International Programs office is required to report your arrival no later than 30 days from the start date indicated on your I-20. If you arrive close to 30 days after the start date on your I-20, report your arrival to us immediately if you are not at the orientation ([international@csuci.edu](mailto:international@csuci.edu) or 805-437-3107)
- Fill out a New International Student Information Sheet with your local contact information (this form will be provided at your orientation)
- Obtain your CI Student ID card. To obtain a university identification card, go to the Enrollment Service Office in Sage Hall. You will need to bring your photo ID (passport is fine)



## HOW TO APPLY FOR AN F-1 VISA

You need to apply for an F-1 visa to enter the United States to study. You should apply for the visa at the nearest U.S. your home country using the I-20 form that will be sent to you after acceptance embassy or consulate in . Do not enter the U.S. through the visa waiver program, if available for your country.

Visa procedures vary from one U.S. embassy or consulate to another; before you apply for your visa, check with the U.S. embassy or consulate where you plan to apply, to learn about their specific procedures and policies regarding F-1 visa applications as well as to determine exactly which supporting documentation is required. For example, some U.S. embassies and consulates will operate on a walk-in basis, which may cause an issue as wait times can be long, while others will require that you make an appointment several days in advance. Others may accept F-1 visa applications only during certain hours of the day. Please do some research in advance of your visit so that you will be prepared as much as possible.



Several standard items are required in support of your application for a U.S. visa:

- Signed and valid I-20 form issued by the International Programs office
- Current & original financial documentation
- Valid passport
- Proof that you have a permanent residence outside of the U.S.
- One or more passport-type photographs
- Non-immigrant visa application (available at the U.S. embassy or consulate)
- Please pay the SEVIS fee and bring the receipt before going to the U.S. embassy or consulate for their visa interview

### Maintenance of Status

The following is a quick reference guide for maintaining status as an F-1 nonimmigrant student:

- Keep your passport valid at all times
- Maintain full-time enrollment (12 units per semester for undergraduate students and 8 units per semester for students), and make normal progress toward your degree objective
- Do not accept any employment off campus without the permission of the International Programs office.
- Maintain correct address housing address on myCI account.
- Notify the International Programs office if you plan to transfer to another school graduate
- File an application to extend your I-20 PRIOR to the end of the program date on your current I-20. You may request an extension as early as 30 days. The I-20 request form must be authorized by your academic advisor/professor
- Be employed only with authorization
- Carry health insurance as required by Federal regulations
- **Report any change of address to the International Programs office within 10 days of change**

## THE F-1 VISA, THE I-94 CARD, MAINTAINING F-1 STATUS

### THE ENTRY VISA

The entry visa is issued at an American Consulate in a country outside the U.S. These visas are either for single entry to the U.S. or for multiple entries as noted on the visa. There is a time limit for the use of the visa. Sometimes a multiple entry visa is valid for the amount of time expected to complete the program sought, and, sometimes it is only good for one year or less. During this time period an F-1 student may leave the U.S. and be able to return. If he/she leaves the U.S. after that time period, however, a new visa will be required to return. An important thing to remember is that this visa is an entry visa and, therefore only needed when entering the U.S. from another country. It does not control your stay in the U.S.

<https://www.usembassy.gov>

### THE I-94 NUMBER\*

The I-94 number is another necessary number that is issued by the United States Citizenship and Immigration Service (USCIS) officer at the airport when you arrive in the United States. The I-94 number is valid as long as you remain in the country and are in status. The number is issued electronically, you can access your I-94 information here- <https://i94.cbp.dhs.gov/i94/#/home>. This link will direct you to the i94 website's home page. From here there will be an option to "Get Most Recent I-94". Once this is clicked, this will direct you to a new page that will allow you to answer some questions and once done, will provide you with your most recent I-94. You may need to print the I-94 number if you apply for a driver's license or obtain employment

### THE I-20 FORM

The I-20 Form is the document that CSU Channel Islands issues to you after you accept the offer of admission. It records information that the U.S. government needs for its records and to grant an entry visa. On the I-20 form there is a place to record the beginning and ending dates of your program. This ending date is important because it is the date by which you must complete your program. Failure to do so may result in your being out of status with Homeland Security. If you lose, or damage your I-20, please contact the International Programs office so that we can issue a new document for you.

Department of Homeland Security U.S. Immigration and Customs Enforcement		I-20, Certificate of Eligibility for Nonimmigrant Student Status OMB NO. 1653-0038	
<b>SEVIS ID: N0004705512</b>			
<b>SURNAME/PRIMARY NAME</b> Doe Smith  <b>PREFERRED NAME</b> John Doe-Smith  <b>COUNTRY OF BIRTH</b> UNITED KINGDOM  <b>DATE OF BIRTH</b> 01 JANUARY 1980  <b>FORM ISSUE REASON</b> INITIAL ATTENDANCE		<b>GIVEN NAME</b> John  <b>PASSPORT NAME</b>   <b>COUNTRY OF CITIZENSHIP</b> UNITED KINGDOM  <b>ADMISSION NUMBER</b>   <b>LEGACY NAME</b> John Doe-Smith	
		<b>CLASS</b>  <b>F-1</b>  <b>ACADEMIC AND LANGUAGE</b>	
<b>SCHOOL INFORMATION</b>			
<b>SCHOOL NAME</b> SEVP School for Advanced SEVIS Studies SEVP School for Advanced SEVIS Studies  <b>SCHOOL OFFICIAL TO CONTACT UPON ARRIVAL</b> Helene Robertson EDSO		<b>SCHOOL ADDRESS</b> 9002 Nancy Lane, P.O. Washington, MD 20711  <b>SCHOOL CODE AND APPROVAL DATE</b> BAL214F44444000 03 APRIL 2015	
<b>PROGRAM OF STUDY</b>			
<b>EDUCATION LEVEL</b> DOCTORATE  <b>NORMAL PROGRAM LENGTH</b> 72 Months  <b>PROGRAM START DATE</b>	<b>MAJOR1</b> Economics, General 45.0601  <b>PROGRAM ENGLISH PROFICIENCY</b> Required  <b>PROGRAM ENROLLMENT DATE</b>	<b>MAJOR2</b> None 00.0000  <b>ENGLISH PROFICIENCY NOTES</b> Student is proficient  <b>PROGRAM ENROLLMENT DATE</b>	

## SEVIS FEE INFORMATION FOR F-1 STUDENTS AND VISITING SCHOLARS

The Student & Exchange Visitor Information System (SEVIS) is an internet-based system that allows schools and the U.S. Citizenship and Immigration Services (USCIS) and U.S. Immigration and Customs Information (USICI) to exchange data on the visa status of international students. Information is transmitted electronically throughout the student's academic career. U.S. Consulates and other U.S. government agencies will have access to this information.

### SEVIS FEE

SEVIS Fee Amounts	<a href="http://www.ice.gov/sevis/i901">http://www.ice.gov/sevis/i901</a>
I-901 SEVIS Fee Payment Tutorial	<a href="http://www.ice.gov/sevis/i901">http://www.ice.gov/sevis/i901</a>
I-901 SEVIS Fee Assistance	<a href="mailto:Fmjfee.SEVIS@ice.dhs.gov">Fmjfee.SEVIS@ice.dhs.gov</a> or 703-603-3400

Applicants who require a visa to enter the United States must pay the SEVIS fee before going to the U.S. embassy or consulate for their visa interview. Applicants who are citizens of Canada, Bermuda, Bahamas and residents of certain other islands (see 8 CFR 212.1a) wishing to apply for F-1, F-3, M-1, M-3, or J-1 status at a Port of Entry into the United States must pay and process the SEVIS fee before appearing at the Port of Entry. Nonimmigrant's currently in the United States who apply for student or exchange visitor status must pay the fee prior to filing their change of status application.

International students and exchange visitors are subject to this fee which will be used to administer and maintain the Student and Exchange Visitor Information System (SEVIS), support compliance activities, and establish SEVIS Liaison Officers. SEVIS, the automated system for collecting, maintaining and managing information about foreign student and exchange visitors during their entry to, stay in, and exit from the United States, will be used to record and track the I-901 fee payment.

### PAYMENT OF THE SEVIS FEE

On-line submission of Form I-901 to DHS using a credit card (Visa, MasterCard, or American Express accepted). Mail-in submission of Form I-901 to DHS address on form, along with the current J visa applicant SEVIS fee paid by check, money order, or foreign draft drawn on a financial institution in the U.S. and payable U.S. currency. Another person (friend or family) can make the payment for an exchange visitor by one of the two methods above.

### Receipts

DHS will issue and mail an official paper receipt I-797 acknowledging every payment regardless of payment method. Express delivery service for the I-797 receipt may be requested at an additional cost. Anyone who submits an individual fee electronically will be able to print out an electronic receipt immediately at the time of payment for use in advance of the mail delivery of the official paper receipt.

Although SEVIS fee payments will be recorded by DHS in the F-1 students' SEVIS records and will eventually be used by government officials to document the SEVIS fee payment, it is recommended that a SEVIS fee receipt be used to request any status-related benefit (i.e., application for visa, admission at U.S. port-of-entry, application to change status).

NOTE: DHS will not refund the SEVIS fee if F-1 students are not granted a visa or choose not to come to the U.S. after their visas are granted.

Additional questions or concerns should be directed to the International Programs, 2061 Sage Hall, 805-437-3107, [international@csuci.edu](mailto:international@csuci.edu)

## ARRIVAL IN THE USA & Transportation to Campus

Before departing, make sure you have the following documents with you in your carry-on luggage as immigration documents:

- All appropriate and required application forms
- Valid Passport (must be valid 6 months beyond program end date)
- Certificate of Eligibility for F-1 Status (I-20 Form)
- Acceptance letter
- Evidence of finances (sponsor letter or personal funds as shown on personal bank statement)
- Evidence of degrees earned or transcripts and proof of student status
- Any other documentation your embassy/consulate requires – check their web sites
- International Credit Card (hotels in the USA require a credit card) officers may ask you for these

Leave copies at home and carry an extra copy in your luggage. These might include copies of: passport, driver's license, identification cards, I-20, power of attorney, banking/financial information, emergency contact lists, pre-arrival information, travel itinerary and tickets.

Always make sure to know the address you will be using in the United States prior to arriving. Immigration officers will need to know your address in the United States to enter into their system. If you are first staying at a hotel you should know the address of the hotel (IMPORTANT for students who will not be moving directly into Housing )

**Important Note:** Coordinate move in information with campus housing, if applicable.

### TRANSPORTATION FROM THE AIRPORT TO CAMPUS

The nearest international airport is Los Angeles International Airport (LAX). Airport transportation is available through the following companies. For the most accurate information go to the transportation section of LAX Airport. Please visit their web sites for making a reservation. You can also check out rideshare apps such as Uber and Lyft.

LAX Ground Transportation:

Website: <https://www.flylax.com/lax-traffic-and-ground-transportation>

Santa Barbara Airbus (Shuttle from LAX to Camarillo Metrolink Stations:

<https://www.sbairbus.com/>

Super Shuttle Reservations:

Tel: +1 (800) 258-3826 – Website: [www.supershuttle.com](http://www.supershuttle.com)

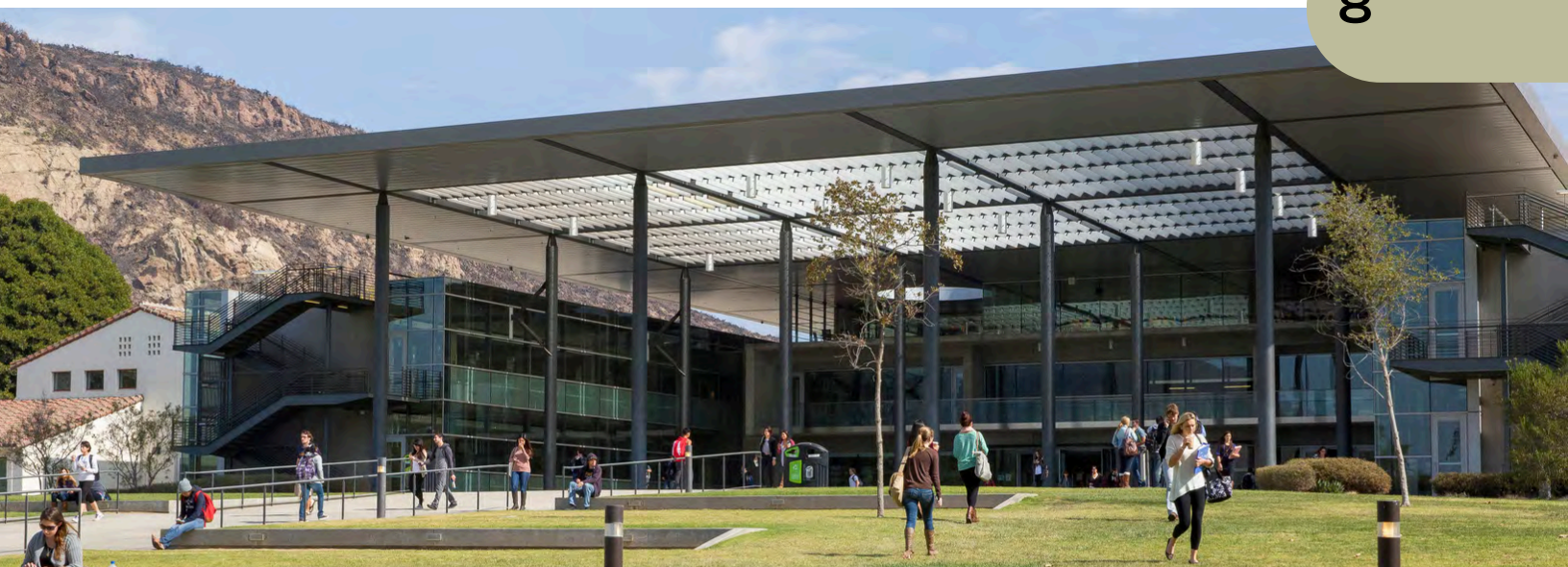
Prime Time Shuttle Reservations:

Tel: +1 (310) 536 7922 – Toll Free in the US: +1 (800) 733-8267 – Website: [www.primeshuttle.com](http://www.primeshuttle.com)

Ventura Shuttle (Drops off at a hotel in Ventura, and 2nd location at Oxnard Airport). You will need to take a taxi or ride share to the University from there) Please pay attention to baggage limits:

Tel: +1 (805) 650-6600 – Website: [www.venturashuttle.com](http://www.venturashuttle.com)





## ORIENTATION AT CI

Upon arriving in the United States, you must complete a New Student Data Sheet as required by the Department of Homeland Security. You must attend the mandatory orientation organized by the International Programs (IP) office where the IP staff will provide the New Student Data Sheet for you to complete.

You must report to the International Programs office within 7 days of your program start date so that the International Programs office can activate your record. If your SEVIS record is not activated within 30 days of the program start date, you are out of status and must leave the country. This start date can be found on your form I-20 issued by CSU Channel Islands.

When you come to the International Student Orientation; you must bring the following documents:

- Passport/Visa
- I-94 information\* (online)

Additionally, take a note on your local address and contact information as we will be verifying these information during orientation.

The following information will be covered at orientation:

- Immigration regulations
  - Important Documents
  - Health Insurance
  - Maintaining Status
- Course Registration
- Allowable Employment
- Travel
- Classroom Culture in the United States
- When to come to the International Programs office

## The Course Numbering System

Most CSU Bachelor degrees are four years in length. Lower division courses are designed for first-year and second-year CSU students undertaking an undergraduate degree although courses may be taken by other students. Many upper division courses have prerequisite course work which must be satisfied in order to take the course. Prerequisites are provided in course descriptions which can be found online in the course catalog: <http://www.csuci.edu/academics/catalog-and-schedule/>. Graduation requirements can be found in the catalog. Detailed course outlines and/or syllabi are not available online but are given to students on the first day of class.

100-299	Lower division (undergraduate)
300-499	Upper division (undergraduate)
500-699	Graduate (exchange students are not eligible for these courses)

## HOUSING ACCOMODATIONS

Do not leave finding housing accommodations for the last minute! Many students assume they will be able to find housing rather quickly and that is most often not the case. These students usually end up spending much more money on a hotel/motel while looking for last minute housing. Please use extra caution against scams if you are finding your own housing. Do your best to make sure it is legitimate. Use extra caution when asked to transfer money up front.

---

### ON CAMPUS HOUSING

On campus housing is available to international students and scholars. You cannot register for housing until you have received your myCI letter portal account letter. Once you have the myCI information then you will be able to access the student housing portal and make payments (after the housing application is open).

Please visit the housing web site at <http://www.csuci.edu/housing/index.htm> to reserve space. Please note that a \$50 non-refundable application fee is charged for applying to housing. Housing is on a first come, first served basis. Further, in order to reserve a bed space, the deposit payment must be paid in the amount of \$500.

If you want to apply for on campus housing for the Fall semester which begins in August, you must be admitted and apply for housing by mid-April in order to secure a room. All housing applications received for fall after mid-April will be placed on a waiting list.

### Housing Links:

Housing amenities and fees: <https://www.csuci.edu/housing/accommodations-rates/index.htm>

Facebook: CI Housing: <https://www.facebook.com/cihousing>

### Housing Contact for International Students

Email: [student.housing@csuci.edu](mailto:student.housing@csuci.edu)

Telephone: (805) 437-8577



## OFF CAMPUS HOUSING

### Home/Apartments/Rooms for Rent

Off Campus Housing Search Engine: <http://csuci.och101.com/>

Facebook Group: "CI Off-Campus Housing (CSUCI)"

### University Glen

University Glen is situated on university land less than eight miles from the charming, historic town center of Camarillo. Its residents enjoy a secluded residential setting – surrounded by colorful orchards, views of rolling hills, and adjacency to campus activities. The new community affords a variety of architecturally distinctive Spanish Colonial and Monterey- style residences, all well-appointed to fit the Southern California lifestyle with private courtyards, balconies, and generously sized room interiors. Please visit the website at more information <http://universityglen.csuci.edu/>, or email [universityglen@csuci.edu](mailto:universityglen@csuci.edu)

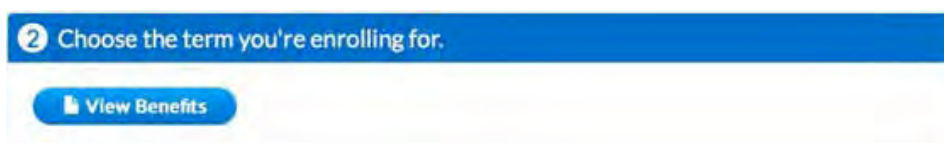
## MANDATORY HEALTH INSURANCE REQUIREMENT

for Health insurance is a requirement for all CSU Channel Islands international students. JCB Insurance Solutions is the university's designated insurance company [www.jcbins.com](http://www.jcbins.com). Purchasing this insurance is part of the conditions of attendance. If the student refuses to purchase this insurance, the student's acceptance status will be terminated.

The IP office will send you information regarding purchasing insurance. When you receive the information be sure to following the directions that will be provided.

For now, you can inform yourself of the insurance plan by reading the summary of benefits and coverage: purchase the insurance <https://student.jcbins.com/138>

The insurance benefits can be found under step two at the enrollment web page of the medical insurance.



## UNIVERSITY'S HEALTH CENTER

CSU Channel Islands Student Health and Counseling Center is located in Yuba Hall, behind Sage Hall/Enrollment Center. The Student Health Services hours during the semester are listed at <https://www.csuci.edu/studenthealth/clinic-hours.htm> For more information, please visit the Student Health Services web site at <http://www.csuci.edu/studenthealth/>.

## IMMUNIZATIONS

The health center is also the office to contact regarding immunizations. Immunization information can be found on their website at <https://www.csuci.edu/studenthealth/services/immunizations.htm>. Please visit this website for information on the required immunizations, and how you can submit your verification.

## Counseling and Psychological Services

<https://www.csuci.edu/caps/>

## Disability Accommodations and Support Services (DASS)

<https://www.csuci.edu/dass/>

## OFF CAMPUS CLINICS AND URGENT CARE

If you are ill and the Student Health and Counseling Center is closed or you cannot get to campus, health care services are available through the Ventura County Ambulatory Care Clinics. Students must present their CSUCI student identification card before receiving services. As with the campus clinic, fees will be charged for lab services, x-rays, and care beyond basic student health services. You should call the clinic in your area for an appointment or urgent care information.

Channel Islands Family Practice Urgent Care 2103 Pickwick Dr. Camarillo, CA 93010 (805) 484-7448	Solar Urgent Care 2100 Solar Dr. Ste. 100 Oxnard, CA 93036 (805) 988-9000
Exer Urgent Care 359 Carmen Dr CA 93010 (805) 482-5592	Ventura Urgent Care Center 5725 Ralston St. Ste. 101 Ventura, CA 93003 (805) 656-6585

## BANKING

### Checking Accounts:

A checking account at a bank is essential in this country. It is convenient and practical to write a check instead of paying cash when you do business. Many business transactions require payment by checks. Sometimes a small monthly charge and/or a minimum balance is required for a checking account. You should establish an account as soon as possible so that you may have easy access to your money for initial expenses.

### Saving Accounts:

You may also wish to open a savings account if you have large amounts of money. A savings account allows you to save and earn interest on your money. There are several types of savings accounts. The three main types are: General Savings of deposit (CDs). Account, Money Market Account and certificates Money market accounts are designed for those with relatively large amounts of money, such as \$2,500 or more, to sometimes earn a high rate of interest. deposit. These accounts A CD is a type of savings account in which the depositor agrees to have funds on deposit for a specific period of time, such as six months. The only fees that are associated with CD's are penalty fees charged for an early withdrawal.

### Identification:

To open a checking or savings account, you will need to present two pieces of identification (ID). One must be your passport; the other may be a driver's license or a CSUCI card. It is not required that you have a social security number to open a bank account.

### **BANKING & ATMs**

Citibank: 430 Arneill Rd, Camarillo, CA 93010. 805-465-6503
Bank of America: 2400 E. Ponderosa Dr., Camarillo 805-383-8300
Wells Fargo: 11 E. Ponderosa Dr., Camarillo 805-484-2787
Chase Bank: 2300 E. Ponderosa, Camarillo 805-987-1099

### ATM:

With either a checking or savings account you may ask for an Automatic Teller Machine (ATM) card. This card will enable you to make deposits or withdrawals at banking machines located outside banks and in other locations. We recommend that you take precautions when using an ATM late at night.



## CREDIT CARDS:

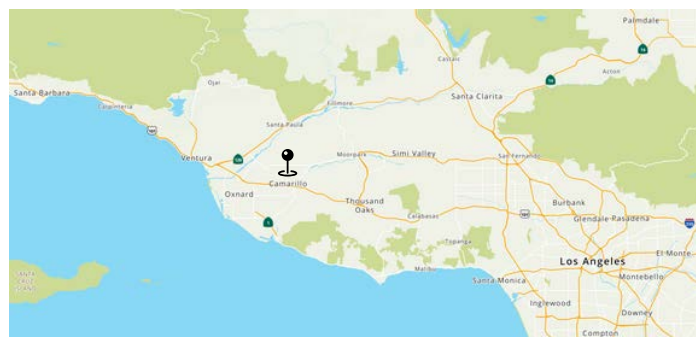
12 Credit cards (MasterCard, Visa, and American Express, for example) are also available through banks. These cards are used to purchase items or services. At the end of every month, you will be billed for your monthly charges. You may pay the entire bill or only a portion. If you pay only a portion of the bill, an interest charge will be added to the remaining balance. Beware! Credit card companies charge high interest on unpaid balances and this can be very expensive!

## **CAMARILLO & VENTURA COUNTY WEATHER**

Camarillo is surrounded by rolling hills, fields of strawberries and avocado and citrus orchards, where mild ocean breezes and temperatures prevail throughout the year. Camarillo evokes a feeling of the Mediterranean. The city enjoys more than 300 days of sunshine annually. Rainfall occurs most frequently in January and February, with an average of 15 inches (38 centimeters) of precipitation each year.

Recognizing that clean, healthful air is an important factor in sustaining a community's livability, the City is committed to attracting non-polluting industry and business and strengthening the economic viability of firms already here. Camarillo enjoys smog-free skies most of the year – in fact, the federal threshold for ozone (the primary ingredient of smog) was exceeded in the city on only four days in the most recent five-year period for which records are available. This remarkable record – one of the best in Ventura County – can be credited to both the city's location and its careful attention to the Council-approved General Plan, which incorporates appropriate land use and transportation planning strategies into the environmental review and community development processes.

Camarillo is a thriving community of 65,000 in the heart of Ventura County. Situated in the Oxnard Plain, and just nine miles from the ocean, Camarillo offers an appealing mix of both rural and suburban lifestyles. With an average temperature in the low 70's in Fahrenheit (about 20 degrees Celsius) and over 300 days of sunshine annually, Camarillo's climate is hard to beat anywhere. But these are just a few of the reasons why Camarillo is the best place to live, work, and play!



Located along U.S. Highway 101, Camarillo is midway between Los Angeles to the south, and Santa Barbara to the north. While Camarillo is worlds away from the hustle and bustle of Los Angeles, there are a number of convenient transportation options to reach L.A.'s important business contacts.

A recent survey by the Pacific Coast Business Times lists the top 50 publicly traded, and top 50 private companies in the tri-counties of Ventura, Santa Barbara, and San Luis Obispo. While Camarillo ranks only 4th in population among the ten cities in Ventura County, twelve Camarillo-based companies were among these 100 firms. Additionally, among the top private companies are Delta Exchange Corp. and Hi-Temp Insulation. Additionally, other prominent firms such as Rockwell Scientific and Decker's Outdoor have a significant presence in Camarillo.

Rainfall is concentrated in a six-month period from late October through April. Average total rainfall per year is 15 inches (38 centimeters). Fall weather is typically warm during the day, but sudden 20 degree Fahrenheit drops often occur at nightfall. Winter ranges from dry, sunny or overcast days and 30-degree night drops at nightfall. Brisk springs with average temperatures of 62 degrees Fahrenheit (about 16 degrees Celsius) in February gradually give way to sunny, warm weather in July through September with highs reaching often into the 90's in Fahrenheit (about 32 degrees Celsius). Cooling evening fog from the ocean moderates summer weather. Winds on the coast become blustering, but the buffer of coastal hills keep wind speeds down to an average of 4 to 12 miles per hour.

## PUBLIC TRANSPORTATION

As you transition from your home country to California, it is important to know that California is mostly navigated by cars not public transportation. Most Californians have their own car and many do not use public transportation. This is why the public transportation system in California is not the most convenient. We hope the following information will help you as you transition to your life here in Ventura County. Public Transportation Options are as follows:

### OPTION 1: Vista Bus

Vista Bus: <https://www.csuci.edu/publicsafety/parking/vctc-intercity-bus.htm>

**WHO:** All students, faculty and staff of CSU Channel Islands are welcome to enjoy the benefits transportation via the Vista Bus.

**WHEN:** The Vista Bus Shuttle Service is available

Monday through Friday 7:00am to 10:30pm. It is best to use Google Maps to find times and your route or pick up brochures in Placer Hall. Go to <https://www.google.com/maps>

**WHERE:** The Vista Bus Shuttle stop on the CI campus is located on Santa Barbara St. and University Dr. The Vista Bus connects to Oxnard C Street Transfer Center and to the Camarillo Metrolink Station.

**COST:** There is no cost to use the Vista Bus. Although you will need your student ID, that is activated, to use the shuttle bus. You can activate your student ID at the Police and Parking Services customer services located in Placer Hall, you must activate your ID card every semester.



For the routes and schedule visit here: <http://www.goventura.org/?q=travel-ventura>

### OPTION 2: Camarillo Trolley

Once you get to the Camarillo Metro link station there is a free Trolley that can take you to restaurants and shopping centers in Camarillo (including the Camarillo Outlets).

For more information visit: [Camarillo Trolley Information](#)



### OPTION 3: Zipcar

Zipcar is "wheels when you want them"! Cars by the hour/day, on-demand 24/7, all-inclusive for students, faculty, staff and University Glen residents. Fuel, insurance, maintenance, roadside assistance and reserved campus parking are all included for a \$15 annual membership fee - plus we'll credit you \$35 in free driving in your first 30 days!

Rates are as low as \$8.50/hour - \$69/day weekdays and \$9.50/hour - \$77/day weekends. Vehicles are in two CI locations: Town Center and Lot A-5 between Anacapa and Santa Cruz Villages. For more information visit:

<https://www.csuci.edu/publicsafety/parking/zipcar.htm>



### OPTION 4: CI Carpool Program

To join the carpool program as students, each student must visit Transportation & Parking at Placer Hall at the same time. Each carpooling group will be allowed one carpool permit. To receive the carpool permit, the carpooling group must (1) pay \$195 with either cash or check, which can be split whichever way the students choose, (2) register all vehicles that are to be used interchangeably with the carpool permit, and (3) link all 13 cars not public carpoolers to the carpool permit.

Each carpool participant will receive three complimentary permits that can be used if they need to drive to campus alone.

If you have questions or concerns, please contact the Parking Services office at 805-437-8430, [parking@csuci.edu](mailto:parking@csuci.edu), or visit Placer Hall during office hours: Monday-Friday, 8 a.m. to 5 p.m.



## PURCHASING A CAR & PARKING

As stated in the previous section, public transportation is not very convenient in Ventura County. It is highly recommended to students who will be living off campus to purchase a car. Remember, if you purchase a car you will also need to purchase car insurance; it is illegal to drive a car without car insurance. Many students have shared a car, thus splitting the cost of gas, insurance, and the purchase price of the car.

### Buying a Car

The International Programs office can in no way assist you with purchasing a car. If you wish to purchase a car while studying in the U.S., you must independently purchase a car. A simple Google search can provide helpful resources in helping you purchase a car. Please make sure that the car is in working order. Unfortunately, there are people who trick buyers into buying cars that are not working correctly. If you can, bring someone with you who knows the mechanics of cars. Please use extra caution to avoid scams and try to make sure it is legitimate. Use extra caution when purchasing and transferring money.

### Renting a Car

Renting a car is also an option. This is a nice option since the insurance policy can be included in the rental agreement so the student will only have to pay for rental fees. If the car has internal problems, the company will replace the car. This can be a more expensive option, but sometimes it evens out since purchasing a car also requires maintenance and purchasing insurance.

### Car Insurance

You must purchase car insurance, driving without car insurance is illegal. Students in the past have purchased car insurance through local car insurance options. A Google search can provide helpful resources.

### Driving in the U.S.

- Driving over the speed limit and being caught means you will be fined an expensive traffic ticket fee and the incident may raise your auto insurance rate.
- Always having your driver's license with you, along with vehicle registration and proof of auto insurance in your car.
- The Department of Motor Vehicles in each state issues current driving regulations. Contact the local Bureau of Motor Vehicles for more information regarding driving rules in that state.
- **Do not drink and drive.** Not only are you putting yourself and others in danger, but you could also lose your license or be put in jail. To be legally drunk in most states, you only need to have a blood alcohol concentration of 0.08 percent.
- Carry jumper cables in your car trunk in case the car does not start. Other useful items include a flashlight, first- warm wool blanket and car maps. aid kit, spare tire, warm wool blanket and car maps.

### Parking Permits

If you purchase a car you will need to purchase a parking permit in order to park on campus during the semester. There is no free parking. Tickets will be given to those who do not have a permit, the campus police are always checking cars for parking permits. Parking permit fees vary, the semester parking permit is nearly \$200. For the most recent price see information here: [http://www.csuci.edu/publicsafety/parking/Parking\\_Fee.htm](http://www.csuci.edu/publicsafety/parking/Parking_Fee.htm).

If you plan to have a car, the parking permit registration can be found here: <http://mycampuspermit.com/>

## CAMPUS RECREATION

We encourage you to take advantage of the campus recreation opportunities. There is a fitness center on campus. Please note that if you are not a degree seeking student, you are classified as an Extended University student. There is a \$75 fee for a semester pass to the fitness center.

## NECESSITIES

### Groceries

Camarillo has a fair number of stores students can go to for things such as groceries and/or dorm necessities. Listed below are a couple of grocery stores that are within reasonable distance from CSUCI. Some stores will have multiple branches in Camarillo.

<p>Vons (1st Location) 820 Arneill Rd, Camarillo, CA 93010 Tel: (805) 482-8802 Website: <a href="http://www.vons.com">www.vons.com</a></p>	<p>Vons (2nd Location) 5275 Mission Oaks Blvd, Camarillo, CA 93012 Tel: (805) 482-7933 Website: <a href="http://www.vons.com">www.vons.com</a></p>
<p>Sprouts Farmers Market 2400 Las Posas Rd, Camarillo, CA 93010 Tel: (805) 233-3755 Website: <a href="http://www.sprouts.com">www.sprouts.com</a></p>	<p>Walmart Neighborhood Market 277 W Ventura Blvd, Camarillo, CA 93010 Tel: (805) 233-3378</p>
<p>Smart &amp; Final Extra! 389 Arneill Rd, Camarillo, CA 93010 Tel: (805) 282-1020</p>	<p>Ralphs Fresh Fare 674 Las Posas Rd, Camarillo, CA 93010 Tel: (805) 388-1781 Website: <a href="http://www.ralphs.com">www.ralphs.com</a></p>
<p>Trader Joe's 363 Carmen Dr, Camarillo, CA 93010 Tel: (805) 388-1925</p>	<p>Target 209 W Ventura Blvd, Camarillo, CA 93010 Tel: (805) 384-0040 Website: <a href="http://www.target.com">www.target.com</a></p>



**WE HOPE YOU WILL ENJOY YOUR TIME STUDYING HERE.**  
**WELCOME TO CI!**