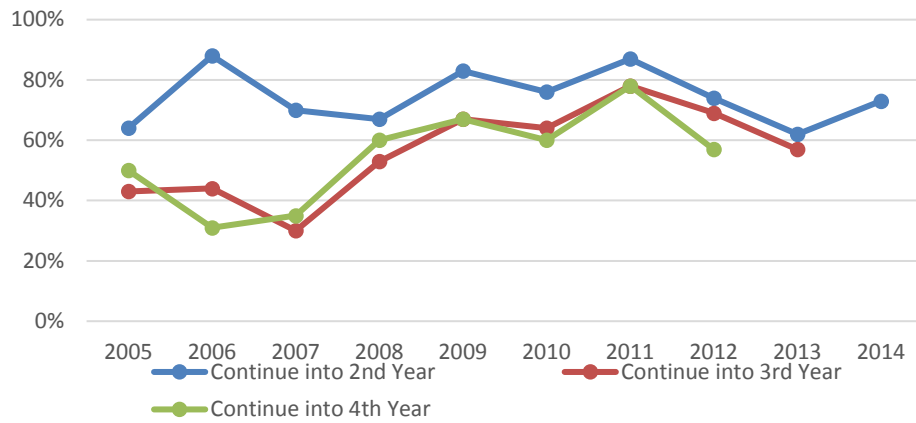
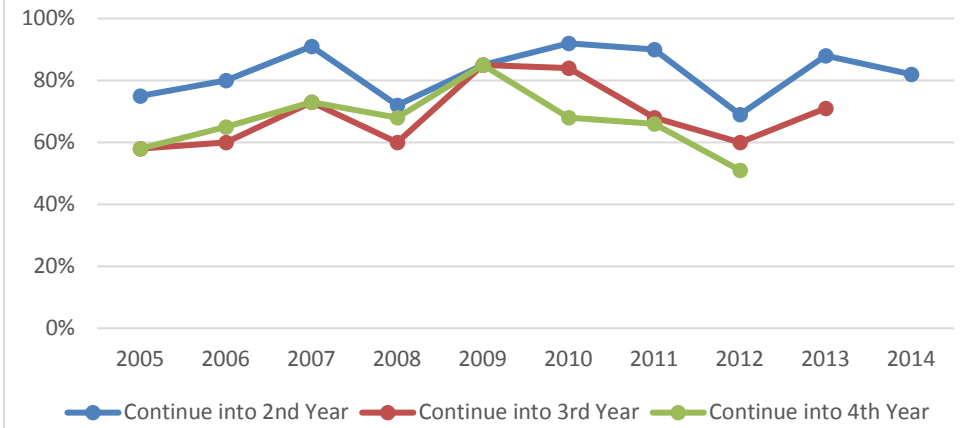


First Time Full-Time Continuation by Ethnicity:
African American



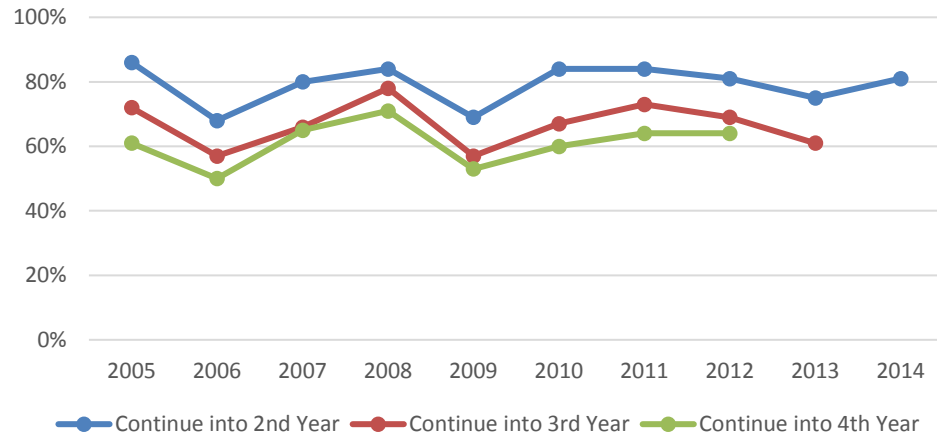
Fall Cohort (African American)	Headcount	Continue into 2nd Year	Continue into 3rd Year	Continue into 4th Year
2005	14	64%	43%	50%
2006	16	88%	44%	31%
2007	20	70%	30%	35%
2008	15	67%	53%	60%
2009	6	83%	67%	67%
2010	25	76%	64%	60%
2011	23	87%	78%	78%
2012	35	74%	69%	57%
2013	21	62%	57%	
2014	41	73%		

First Time Full-Time Continuation by Ethnicity:
Asian

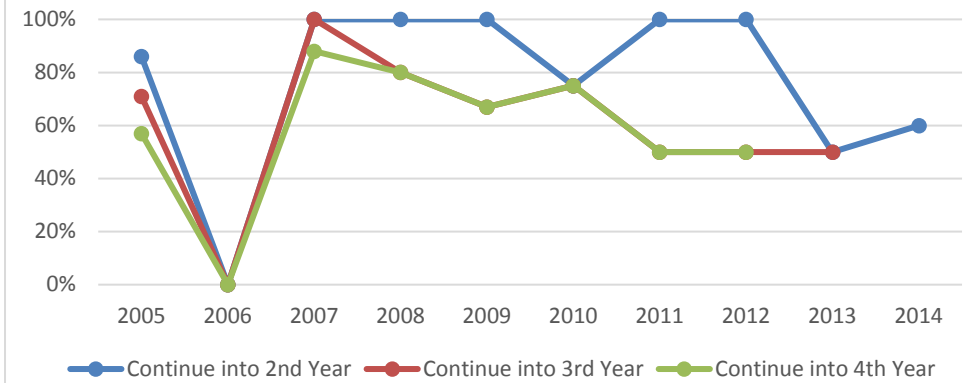


Fall Cohort (Asian)	Headcount	Continue into 2nd Year	Continue into 3rd Year	Continue into 4th Year
2005	12	75%	58%	58%
2006	20	80%	60%	65%
2007	11	91%	73%	73%
2008	25	72%	60%	68%
2009	13	85%	85%	85%
2010	25	92%	84%	68%
2011	41	90%	68%	66%
2012	35	69%	60%	51%
2013	42	88%	71%	
2014	57	82%		

First Time Full-Time Continuation by Ethnicity:
Latino/a



First Time Full-Time Continuation Rates by
Ethnicity:
Native American/Alaskan



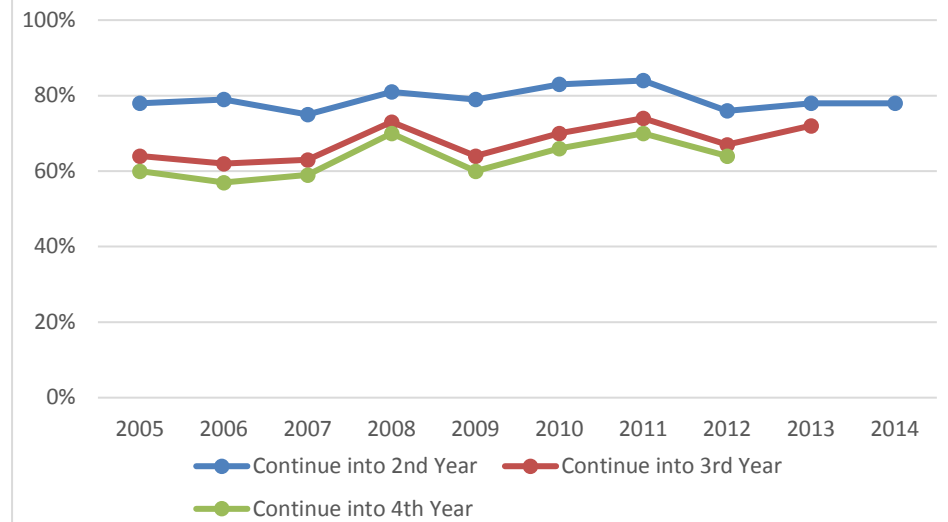
Fall Cohort (Latino/a)	Headcount	Continue into 2nd Year	Continue into 3rd Year	Continue into 4th Year
2005	70	86%	72%	61%
2006	113	68%	57%	50%
2007	157	80%	66%	65%
2008	135	84%	78%	71%
2009	154	69%	57%	53%
2010	184	84%	67%	60%
2011	247	84%	73%	64%
2012	355	81%	69%	64%
2013	438	75%	61%	
2014	511	81%		

Fall Cohort (NA/ALAS)	Headcount*	Continue into 2nd Year	Continue into 3rd Year	Continue into 4th Year
2005	7	86%	71%	57%
2006	3	0%	0%	0%
2007	8	100%	100%	88%
2008	5	100%	80%	80%
2009	3	100%	67%	67%
2010	4	75%	75%	75%
2011	2	100%	50%	50%
2012	2	100%	50%	50%
2013	4	50%	50%	
2014	5	60%		

First Time Full-Time Continuation by Ethnicity:
Pacific Islander/Hawaiian



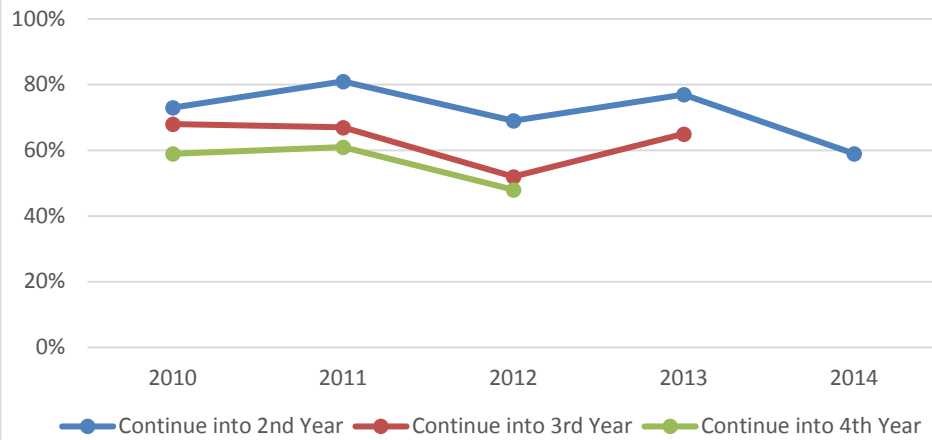
First Time Full-Time Continuation by Ethnicity:
White



Fall Cohort (PI/HAW)	Headcount	Continue into 2nd Year	Continue into 3rd Year	Continue into 4th Year
2005	14	64%	50%	36%
2006	19	79%	74%	58%
2007	16	81%	81%	75%
2008	24	83%	75%	71%
2009	21	71%	67%	57%
2010	0			
2011	2	100%	100%	50%
2012	2	100%	100%	100%
2013	3	33%	33%	
2014	1	0%		

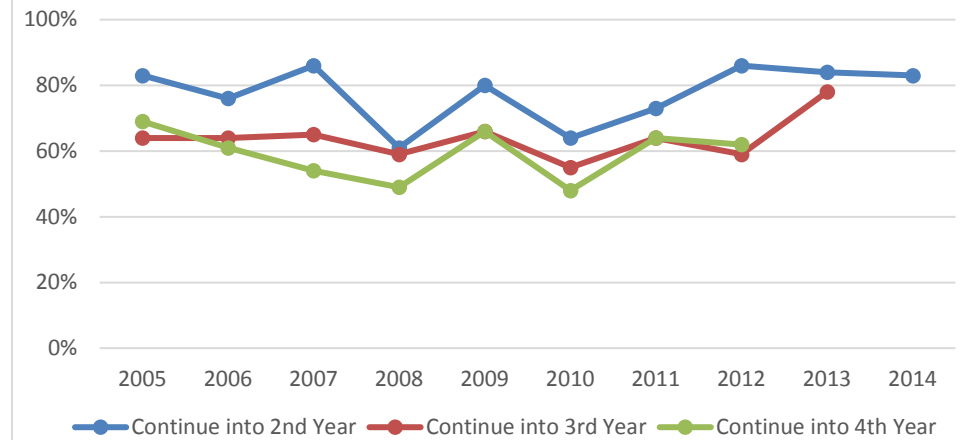
Fall Cohort (White)	Headcount	Continue into 2nd Year	Continue into 3rd Year	Continue into 4th Year
2005	221	78%	64%	60%
2006	242	79%	62%	57%
2007	263	75%	63%	59%
2008	280	81%	73%	70%
2009	230	79%	64%	60%
2010	223	83%	70%	66%
2011	229	84%	74%	70%
2012	232	76%	67%	64%
2013	235	78%	72%	
2014	247	78%		

First Time Full-Time Continuation by Ethnicity:
Two or More



Fall Cohort (2 +)	Headcount	Continue into 2nd Year	Continue into 3rd Year	Continue into 4th Year
2010	22	73%	68%	59%
2011	36	81%	67%	61%
2012	42	69%	52%	48%
2013	48	77%	65%	
2014	37	59%		

First Time Full-Time Continuation by Ethnicity:
Unknown



Fall Cohort (Unknown)	Headcount	Continue into 2nd Year	Continue into 3rd Year	Continue into 4th Year
2005	36	83%	64%	69%
2006	33	76%	64%	61%
2007	37	86%	65%	54%
2008	41	61%	59%	49%
2009	56	80%	66%	66%
2010	33	64%	55%	48%
2011	22	73%	64%	64%
2012	29	86%	59%	62%
2013	32	84%	78%	
2014	29	83%		