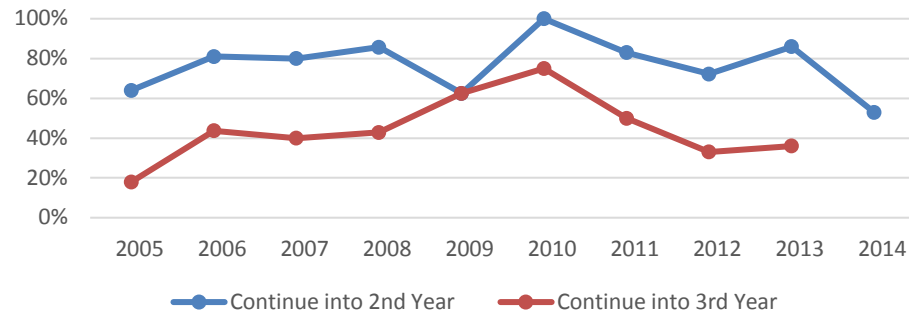
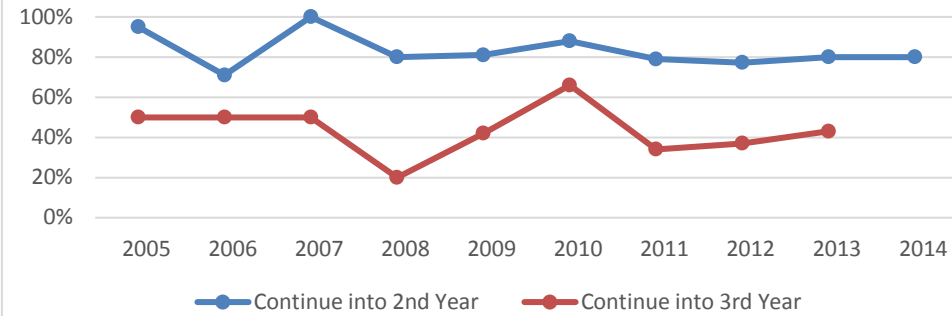


Transfer Continuation by Ethnicity:
African American



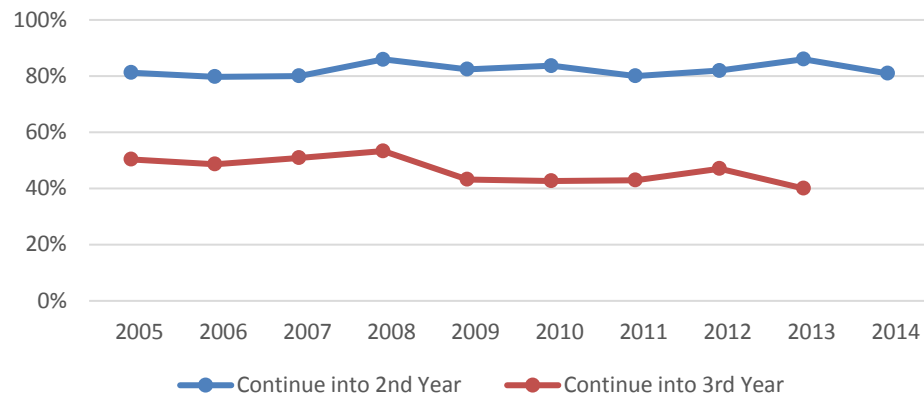
Fall Cohort (African American)	Headcount	Continue into 2nd Year	Continue into 3rd Year
2005	11	64.0%	18.0%
2006	16	81.0%	43.8%
2007	10	80.0%	40.0%
2008	7	85.7%	42.9%
2009	8	62.5%	62.5%
2010	8	100.0%	75.0%
2011	6	83.0%	50.0%
2012	18	72.2%	33.0%
2013	14	86.0%	36.0%
2014	19	53.0%	

Transfer Continuation by Ethnicity:
Asian

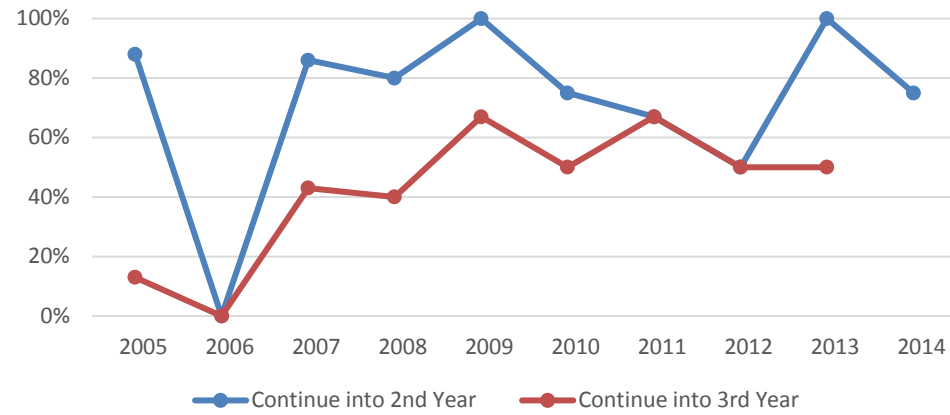


Fall Cohort (Asian)	Headcount	Continue into 2nd Year	Continue into 3rd Year
2005	22	95.0%	50.0%
2006	14	71.0%	50.0%
2007	8	100.0%	50.0%
2008	10	80.0%	20.0%
2009	36	81.0%	42.0%
2010	32	88.0%	66.0%
2011	38	79.0%	34.0%
2012	57	77.2%	37.0%
2013	46	80.0%	43.0%
2014	50	80.0%	

Transfer Continuation by Ethnicity:
Latino/a



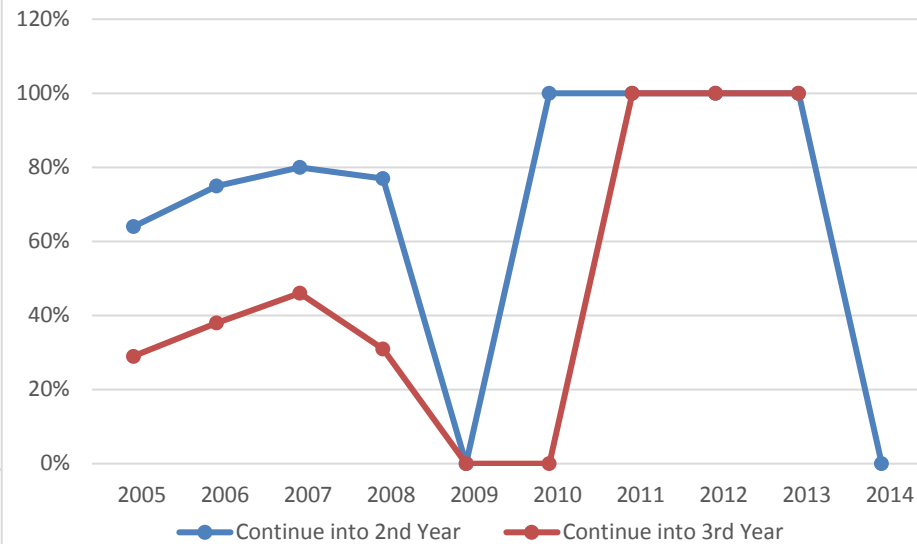
Transfer Continuation by Ethnicity:
Native American/ Alaskan



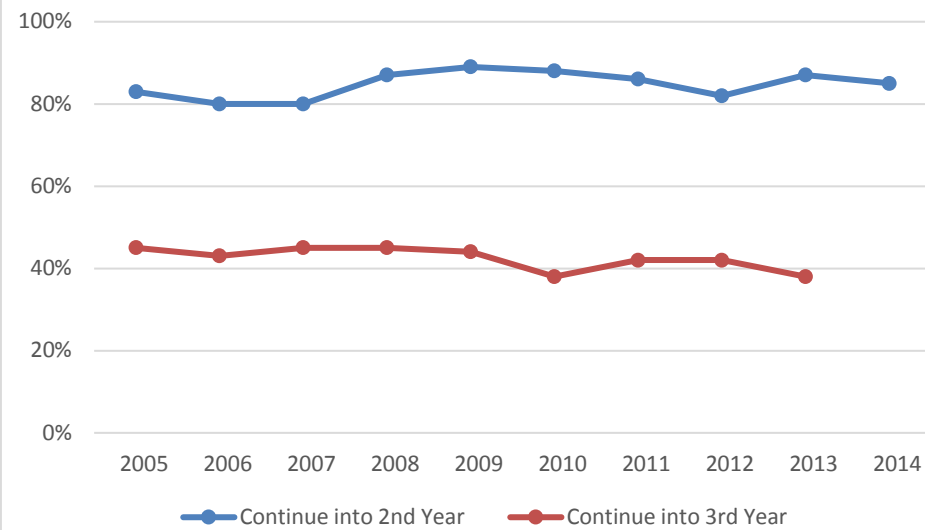
Fall Cohort (Latino/a)	Headcount	Continue into 2nd Year	Continue into 3rd Year
2005	133	81.2%	50.4%
2006	148	79.7%	48.6%
2007	165	80.0%	50.9%
2008	135	85.9%	53.3%
2009	199	82.4%	43.2%
2010	239	83.7%	42.7%
2011	282	80.0%	43.0%
2012	360	81.9%	47.0%
2013	365	86.0%	40.0%
2014	524	81.0%	

Fall Cohort (NA/ALAS)	Headcount	Continue into 2nd Year	Continue into 3rd Year
2005	8	88.0%	13.0%
2006	1	0.0%	0.0%
2007	7	86.0%	43.0%
2008	5	80.0%	40.0%
2009	3	100.0%	67.0%
2010	4	75.0%	50.0%
2011	3	67.0%	67.0%
2012	2	50.0%	50.0%
2013	4	100.0%	50.0%
2014	4	75.0%	

Transfer Continuation by Ethnicity:
Pacific Islander/ Hawaiian

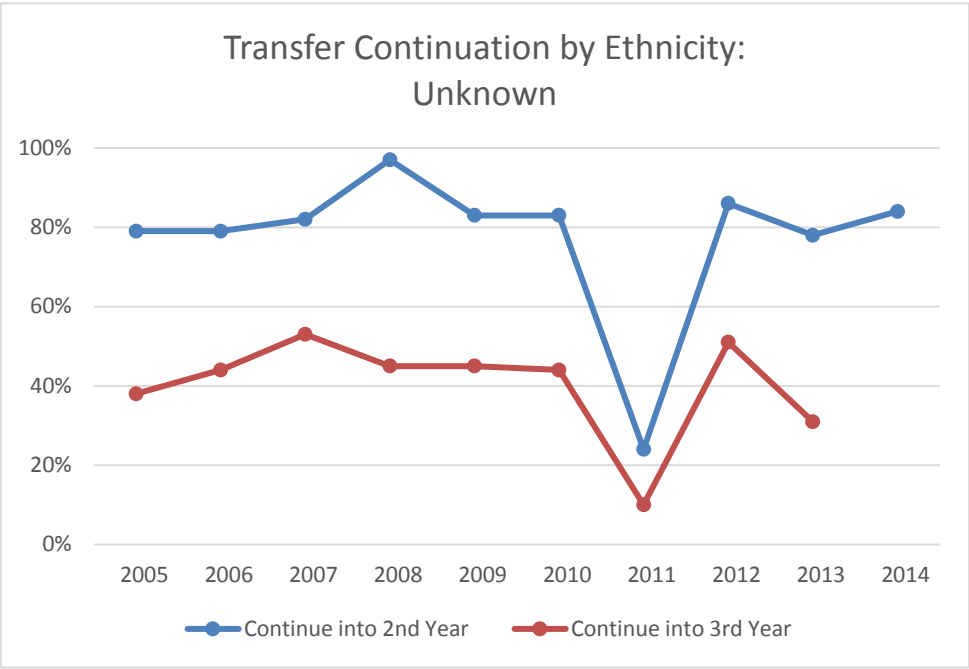


Transfer Continuation by Ethnicity:
White



Fall Cohort (PI/HAW)	Headcount	Continue into 2nd Year	Continue into 3rd Year
2005	14	64.0%	29.0%
2006	16	75.0%	38.0%
2007	35	80.0%	46.0%
2008	13	77.0%	31.0%
2009	1	0.0%	0.0%
2010	1	100.0%	0.0%
2011	1	100.0%	100.0%
2012	1	100.0%	100.0%
2013	1	100.0%	100.0%
2014	0	0.0%	

Fall Cohort (White)	Headcount	Continue into 2nd Year	Continue into 3rd Year
2005	259	83.0%	45.0%
2006	314	80.0%	43.0%
2007	319	80.0%	45.0%
2008	271	87.0%	45.0%
2009	261	89.0%	44.0%
2010	288	88.0%	38.0%
2011	297	86.0%	42.0%
2012	411	82.0%	42.0%
2013	363	87.0%	38.0%
2014	394	85.0%	



Fall Cohort (2+)	Headcount	Continue into 2nd Year	Continue into 3rd Year
2009	15	93.0%	40.0%
2010	35	86.0%	40.0%
2011	34	76.0%	35.0%
2012	48	79.0%	31.0%
2013	47	83.0%	40.0%
2014	51	90.0%	

Fall Cohort (Unknown)	Headcount	Continue into 2nd Year	Continue into 3rd Year
2005	47	79.0%	38.0%
2006	77	79.0%	44.0%
2007	68	82.0%	53.0%
2008	60	97.0%	45.0%
2009	87	83.0%	45.0%
2010	95	83.0%	44.0%
2011	49	24.0%	10.0%
2012	80	86.0%	51.0%
2013	72	78.0%	31.0%
2014	80	84.0%	