



Channel Islands
California State University

PROJECT **ISLAS**

Institutionalizing **S**tudent **L**earning,
Access, and **S**uccess

Title V Part A – Strengthening Hispanic Serving
Institutions Program

Funded by: US. Department of Education

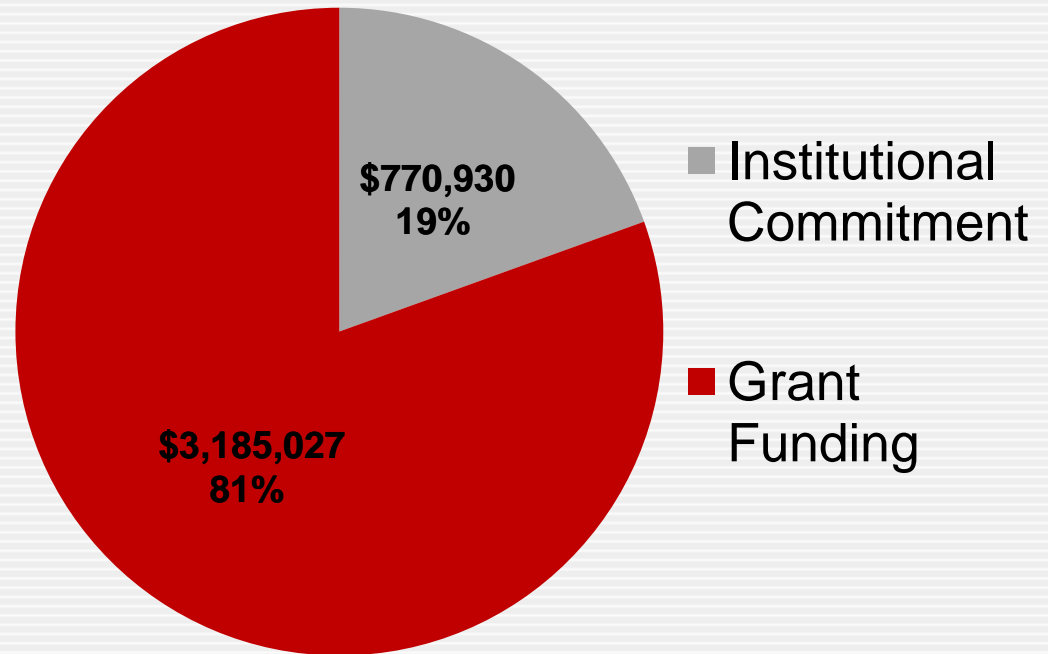
\$3.95M PROJECT OVER FIVE YEARS



Project Period: 10/2010 - 9/2015

Purpose of HSI Funding

1. To *expand* and *enhance* the academic offerings, program quality, and institutional stability of HSIs.
2. To *expand* educational opportunities for, and *improve* the academic attainment of, low-income & Hispanic students.



ABOUT PROJECT ISLAS



Background:

- ❖ Ventura County (VC) has a *high* rate of **university ineligibility** only 23.6% of Latino Students are eligible to apply to a 4-year CA public university.
- ❖ Students lack access to adequate academic advising & university planning guidance (outreach).
- ❖ VC has the *highest* **community-college-going rates** in the state, which disproportionately impacts Latino students by decreasing the odds of 4-year degree attainment.

PROJECT **ISLAS** Focus



Over five years **Project ISLAS** aims to:

1. Infuse a University-going culture in the region by improving access to higher education opportunities.
2. Increase student retention and academic success at CI.

PROJECT **ISLAS** COMPONENTS & ACTIVITIES



Project **ISLAS** is a cross-divisional collaboration with a campuswide and regional impact. Project components include:

- 1. Getting Ready:** To improve the *university readiness* of VC's future university students by developing targeted *outreach programs* for Hispanic students in VC public schools and community colleges.
- 2. Getting Through:** To increase the *academic success* of CI Hispanic and low-income students by developing a *University Experience Program* to increase *retention*.

PROJECT **ISLAS** COMPONENTS & ACTIVITIES



Getting **Ready**: Improving **Access** to Baccalaureate Programs Activities

- ❖ **Regional Bilingual Outreach Website.**
- ❖ **Financial Aid Literacy Workshops.**
- ❖ **Outreach to area high schools targeting 9th graders** to promote 4-year university educational goals.
- ❖ **College planning workshops** at HSs and CCs that cover A-G subject area requirements, transfer requirements, & application deadlines, etc.
- ❖ **“College for a Day”** a regional conference on *pathways to 4-year universities*; sessions for middle school, HS and CC students, administrators, and parents.
- ❖ **A-E General Education (GE) transfer/ articulation workshops** on CC campuses to increase *transfer readiness* through individualized academic advising to map GE requirements & articulation to universities of their choice.
- ❖ **Summer Bridge and Math Academy.**

PROJECT **ISLAS** COMPONENTS & ACTIVITIES



Getting **Through**: Increasing **Retention** and **Degree Attainment** Activities

❖ **University Experience Program (UEP)**

- Freshman (Sophomore) & Transfer Seminars
- Mission-focused curriculum
- Integrated advising, tracking & tutoring
- e-portfolio & electronic assessment management

❖ **Summer Bridge Program**

- Integrated math/English assessment/readiness, advising, & intro to majors
- Remediation services expanded to transfers students

❖ **Academic and Social Integration Programming**

- Integrated Mission Perspectives Programming
- Co-curricular Learning Communities

❖ **UEP Professional Development Academy**

- Outcomes-based Assessment
- Culturally responsive teaching & learning strategies
- Best practices for outreach to Hispanic, first generation, & low-income students

PROJECT **ISLAS** GOALS



- 1. Increase student success by developing a University Experience Program with integrated student support services and co-curricular elements.**
- 2. Build an institutional culture of evidence and assessment and provide professional development opportunities that support student success.**
- 3. Increase direct access to 4-year institutions for traditionally underserved populations.**

AREAS OF INSTITUTIONAL IMPACT



An Hispanic Serving Institution Serves Everyone!

❖ Academic Affairs

- UEP Curriculum Development & Implementation
- Enhanced Academic Support Services
- Opportunities for Faculty Professional Development

❖ Institutional Research & Information Technology

- Tk20: Digitized outcomes-based assessment system
- E-portfolio system
- Technical support & customization

❖ Student Affairs

- Expanded Outreach Services
- Enhanced Student Support Services
- Opportunities for Staff Professional Development

❖ Library Multimedia Equipment

- UEP Long-term Laptop Checkout Program
- UEP E-reader checkout Program

❖ University Advancement

- \$50k Matching University Endowment

PROJECT **ISLAS** STAFF



GETTING **READY**

Breana Christie

ISLAS Outreach **Activity Director**

Vanessa Mendoza

ISLAS Outreach lead

TBD

ISLAS Outreach Associates (6)

Leah Alvarado

ISLAS Summer Bridge Lead

TBD

ISLAS Summer Peer Mentors (8-12)

GETTING **THROUGH**

Dr. Marie Francois

ISLAS UEP **Activity Director**

TBD

UEP Faculty Leads (2)

TBD

UEP Associates (5-7)

TBD

UEP Math & English Tutors (4)

TBD

UEP Academy Faculty Stipends (82)

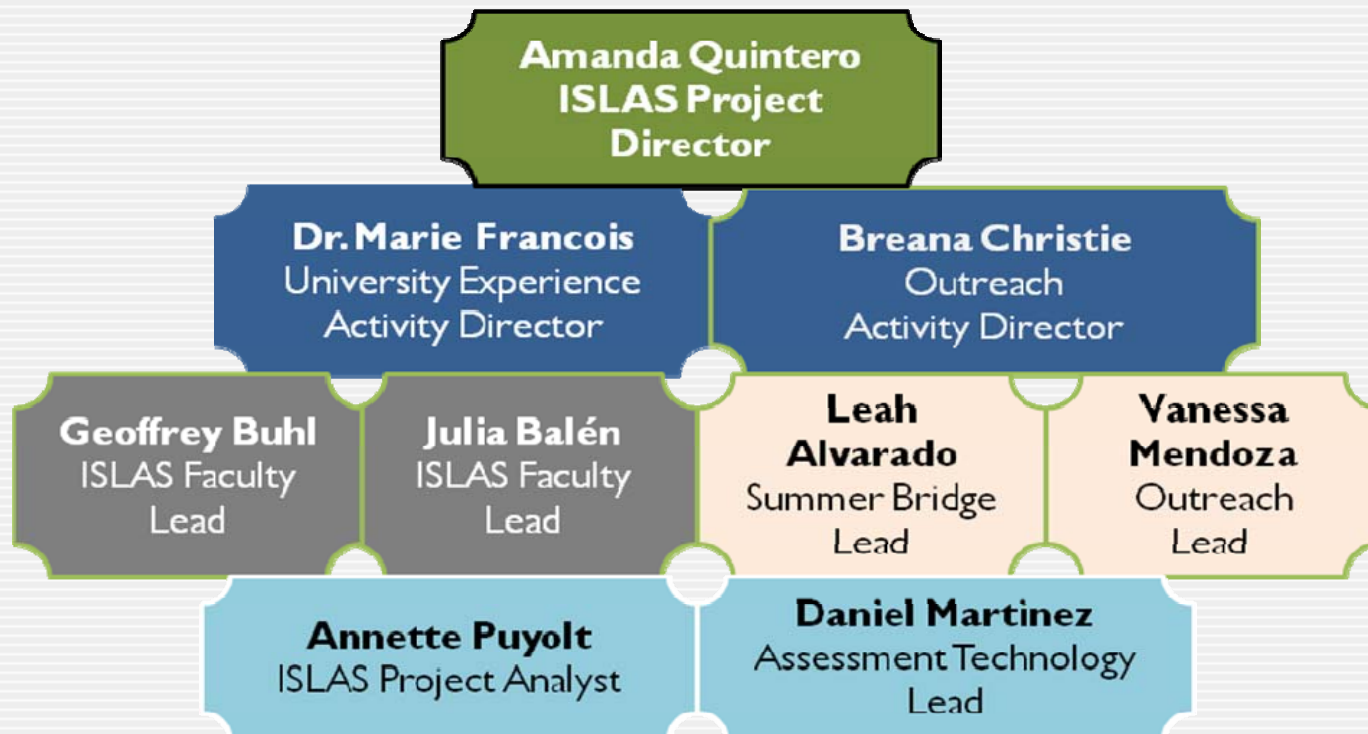
Project Director (PI): **Amanda Quintero**

External Evaluator: **David Trujillo**

Project Assistant: TBD

CHANNEL ISLANDS

PROJECT ISLAS STAFF



CHANNEL ISLANDS