



Channel Islands

CALIFORNIA STATE UNIVERSITY

President's Convocation 2024







NEW FACULTY HIRES



LilyAnne Tamai, Ph.D.

Asian American Studies

Timnit Kefela Araya, Ph.D.

ESRM

Vanina Machado Araujo, Ph.D.

Spanish

Cynthia Estrada, Ph.D.

Educational Leadership

Candice McKinnon, Ph.D.

Early Childhood Studies

Alysha Hachey, Ph.D.

Marketing

Seulgi (Sydney) Kim, Ph.D.

Accounting

Bridget Groat, Ph.D.

Native American & Indigenous Studies

Nathalie Confiac, Ph.D.

Nursing

Joshua Gold, Ph.D.

Health Science

NEW STAFF HIRES

Lelani De La Cruz

Student Account Specialist

Eric Sanchez

Project Manager

Leonard Tolentino

Network Engineer

Justin Daigle

Systems Engineer

Andrea Munson

Vault Teller/Cashier

Rafael Villicana Pantoja

Light Automotive Equipment
Operator

Brandon Chin

Collections Specialist

Alonso Castaneda

Custodian

Jamie Lara

Work Center Specialist

Apolinar Betancourt Riquelme

Groundswoker

Omeca Nedd

Contract Analyst

Josue Hernandez

Student Financials Accountant

Anthony Plascencia

Photographer/Videographer

Sarah Byrd

Instructional Tech I

Taryn McHugh

Curriculum and Articulation
Systems Analyst

Stephanie Yeager

Proyecto SABER Administrative
Coordinator

Fable Mangold

Administrative Analyst/
Specialist

Gabriel Bautista

Academic Program Analyst

Trent Ruiz

Academic Support Coordinator

Karen Flagg

Cloud Forest Restoration Technician

Carlos Heredia

Art Support Technician

Riley Crain

School of Education Academic
Program Assessment Analyst

Yisel Lara Uribe

Articulation and Support Systems
Analyst

Brianna Baeza

Admissions Counselor

Emma Akmakdjian

Marine Debris Grant Coordinator

Veronica Ramos

Project SOAR at CI Grant Analyst

Jasmine Moreno

Extended University Specialist

Joshua Crawley

Acquisitions and Cataloging

Madison Vargas

Residential Education Operations
Assistant

Lauren Spence

Black Cultural Center Coordinator

Brandon Langford

Coordinator of Social Justice, Equity,
and Inclusion Center

Juliette Marquez

Coordinator of Recreation Programming

Madison Hitchcock

Academic Advisor

Brian Accardi

HRE IT Consultant

Shenley Diaz

Learning Communities Coordinator

Paola Dios

SOE Social Media & Events Specialist

Bambi Hosaka

Coordinator for Alumni Engagement

Garrett Ehritt

Laborer

Hector Riestra

University Events Operations
Specialist

Emilio Suarez

Gift Management and
Constituent Record Specialist

Sevag Abajian

Director of Advancement
Database and Operations

Juliana Zendejas

Internship Program Analyst

Lee Yarborough

Career Counselor

Alberto Mendoza

Coordinator of University Outreach Marketing Administrative Assistant

Jonna Lewis

School of Education Budget Analyst Financial Aid Counselor

Joanna Romo

Cal-SOAP Project Director

Julia Shapiro

Administrative Coordinator

Rafael Alarado

Cal-SOAP Program
Coordinator

Amber-Marie Madrid

NAGPRA Director

Daisy Ratzlaff

Communication Specialist II

Morgan Howe

Student Equity Analytics Research
Technician

Deborah Battey

Enrollment Management and

Marketing Administrative Assistant

Hailey Magana

Financial Aid Counselor

Joseph Kim

Financial Aid Systems and Data
Analyst

Manpreet Singh

Admissions Counselor

Alejandra Rodriguez-Mena

Document Management
Coordinator

NEW CAMPUS LEADERS – ACADEMIC AFFAIRS



Jessica Lavariega Monforti, Ph.D.
Interim Provost



Gina Sanchez Gibau, Ph.D.
Associate Vice President for Faculty
Affairs, Success, and Equity



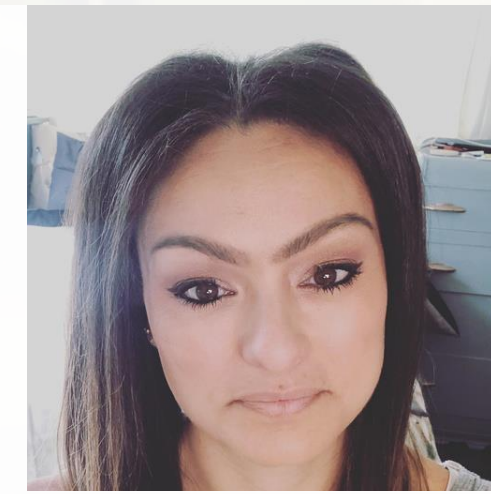
Phil Hampton, Ph.D.
Acting Dean,
School of Arts & Sciences



Luis Sánchez, Ph.D.
Acting Associate Dean,
School of Arts & Sciences



J. Spencer Clark, Ph.D.
Associate Dean,
School of Education



Saiqa Anne Qureshi
Interim Director of Research &
Sponsored Programs

NEW CAMPUS LEADERS – BUSINESS & FINANCIAL AFFAIRS



Bradley D. Olin, Ed.D.
Vice President for Business &
Financial Affairs



Drake Massey
Chief of Police



MaríaElena Plaza, Ed.D.
Associate Vice President for Human
Resources & HRO



Erica Moorner Taylor
Executive Director of Equity &
Inclusion and Title IX Coordinator

NEW CAMPUS LEADERS – STUDENT AFFAIRS



Julia Heck

Associate Vice President for Student
Life & Support Programs and Dean of
Students

NEW CAMPUS LEADERS – UNIVERSITY ADVANCEMENT



Abigail Barany, Ed.D.

Associate Vice President for
University Development

NEW CAMPUS LEADERS – OFFICE OF THE PRESIDENT



Dottie Patten, Ed.D.

Associate Vice President for
Organizational Effectiveness and
Special Assistant to the President

PROMOTED FACULTY - ASSOCIATE PROFESSOR



Raquel Baker, Ph.D.
English



Ronald Berkowsky, Ph.D.
Health Science



Karina Chavarria, Ph.D.
Sociology



Katherine Elder, Ph.D.
Communication



Brooke Ernest, Ph.D.
Math

PROMOTED FACULTY - ASSOCIATE PROFESSOR



Carolee Hurtado, Ph.D.

Education



Weldon Smith, Ph.D.

Psychology



Hugo Tapia, Ph.D.

Biology



Tadashi Dozono, Ph.D.

Education



Argero Zerr, Ph.D.

Psychology

PROMOTED FACULTY - PROFESSOR



Matthew Campbell, Ph.D.
Psychology



Jennie Luna, Ph.D.
Chicana/o Studies



Bryan Tomlin, Ph.D.
Economics



Christina Smith, Ph.D.
Communication



Georgina Guzmán, Ph.D.
English



Kiki Patsch, Ph.D.
ESRM

PROMOTED FACULTY - PROFESSOR



Elizabeth Sowers, Ph.D.
Sociology



Jared Barton, Ph.D.
Economics



Ahmed Awad, Ph.D.
Chemistry



Michelle Dean, Ph.D.
Special Education



Luis Sánchez, Ph.D.
Sociology



Jason Isaacs, Ph.D.
Computer Science

SETTING THE TONE: ON SHARED GOVERNANCE



ACADEMIC SENATE LEADERS



Christina Smith, Ph.D.
Academic Senate Chair



Matthew Campbell, Ph.D.
Second Officer/Vice Chair



Peter Krause, Ph.D.
Third Officer

CI STAFF COUNCIL EXECUTIVE BOARD



Rebecca Slocum
CI Staff Council Chair



Sean Kramer
Vice Chair



Rachel Danielson
Secretary



Colleen Haws
Treasurer



Amanda Sánchez
Custodian of Records

ASI STUDENT GOVERNMENT LEADERS



Andrew Fox
Student Government
President



Pearce Harris
Student Government
Vice President

SHARED GOVERNANCE COUNCIL



Andrew Fox

ASI Student Government
President



Rebecca Slocum

CI Staff Council Chair



Christina Smith, Ph.D.

Academic Senate Chair



President Yao

President





BUILDING A CULTURE OF CARE

“I want to be in the arena. I want to be brave with my life. And when we make the choice to dare greatly, we sign up to get our asses kicked. We can choose courage, or we can choose comfort, but we can’t have both. Not at the same time.”

- Brené Brown, Daring Greatly

IN THE ARENA: PRIORITIES FOR 2024-25



EDUCATION AND ENGAGEMENT: FREE SPEECH & ACADEMIC FREEDOM



Erica Moorer Taylor

Executive Director of Equity & Inclusion and Title IX Coordinator



Gina Sanchez Gibau, Ph.D.

Associate Vice President for Faculty Affairs, Success, and Equity



MaríaElena Plaza, Ed.D.

Associate Vice President for Human Resources & HRO



Kaia Tollefson, Ph.D.

Chief of Staff



Julia Heck

Associate Vice President for Student Life & Support Programs and Dean of Students



Kem French

Director of Inclusive Student Services



Dani Rae

Associate Director of Student Conduct & CARE



Marc Mootchnik

University Counsel



Nancy Covarrubias Gill

Associate Vice President for Communication & Public Relations

REAFFIRMATION



WSCUC RECOMMENDATIONS

6 Commendations

- Strides in Transitioning Campus Culture towards Integrated planning Processes
- Transparent Use of Data
- Community Engagement
- Commitment to Diversity
- Passion for Student Success
- Support for Faculty and Staff in Learning Outcomes Assessment

6 Recommendations

- Financial and Enrollment Planning
- Academic Master Plan
- Student Success Interventions
- Holistic Student Success Approaches
- Execution of the Inclusive Excellence Action Plan
- Implementation General Education Program Assessment Process



ENROLLMENT MANAGEMENT

↓ 6%

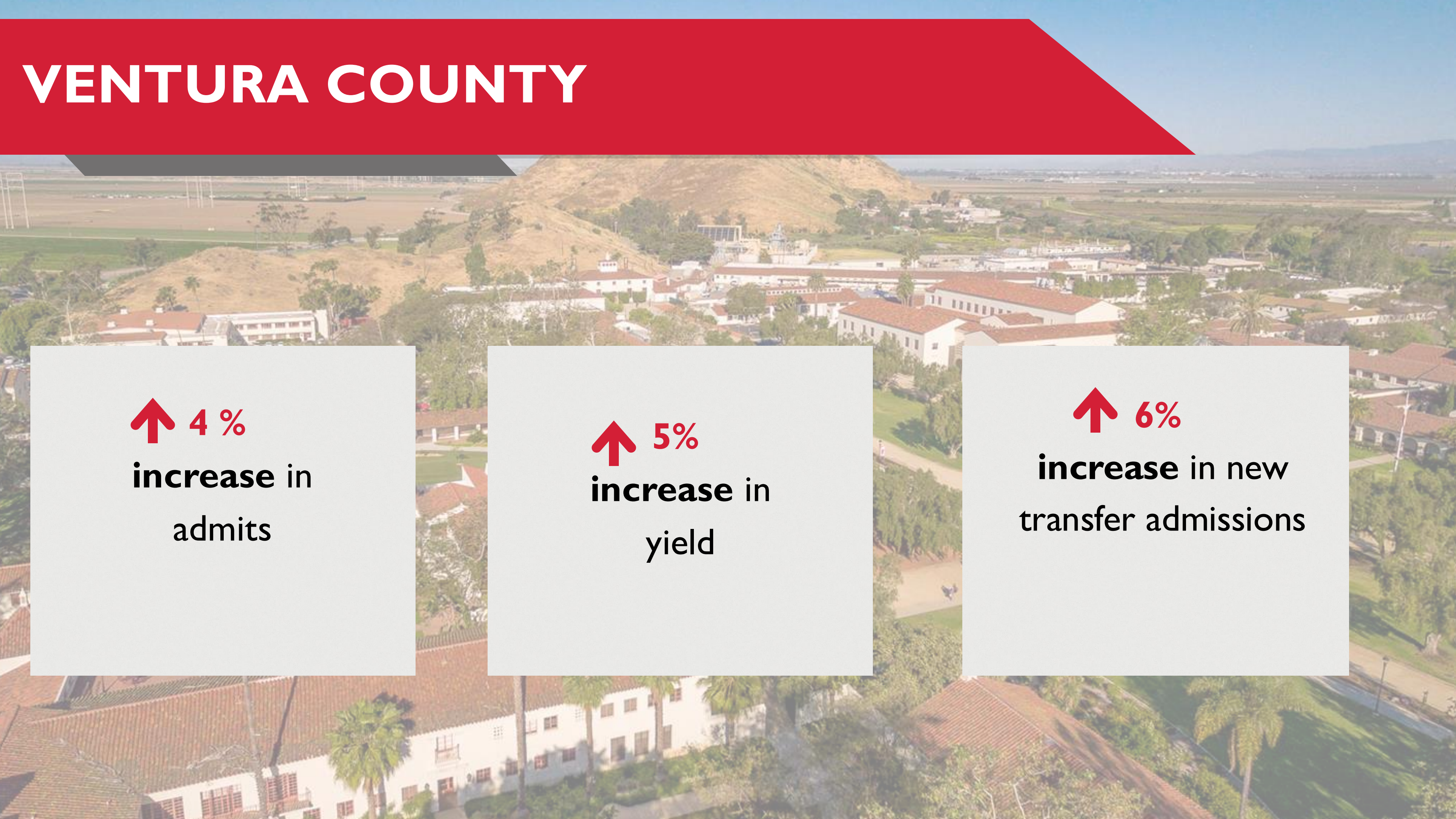
decrease in
student enrollment
compared to
Fall 2023

↓ 6%

decrease in 2024
First-Time
First-Year students

↑ 6%

increase in New
Transfer Students



VENTURA COUNTY

↑ 4 %

increase in
admits

↑ 5%

increase in
yield

↑ 6%

increase in new
transfer admissions

ADMISSIONS & RECRUITMENT

- **Customer Relationship Management system (CRM)**
- **Timeline For Financial Aid Packages**

ADMISSIONS & RECRUITMENT

Financial Aid Applications Day to Day (08/19)		Financial Aid Applicant		% Completed (FA/Enrolled)	
Student Type		Fall 2023	Fall 2024	Fall 2023	Fall 2024
Continuing Undergraduate		2,183	2,360	62.7%	74.4%
New Freshmen		473	476	83.3%	91.5%
New Transfer		585	672	73.2%	80.1%

ADMISSIONS & RECRUITMENT

- **More High-Touch, Engaging Yield Initiatives**
- **Learning Experiences Uniquely Accessible at CI**
- **Quality and Variety of our Student Support Services**
- **Full-Scale Digital Marketing Campaign Fall 2025**





Data+Pedagogy

2024



TOWN CENTER REVITALIZATION PROJECT



SHORT- AND LONG-TERM EFFORTS



BUDGET

↓ **\$75M**

one-time cut
imposed on the CSU

↓ **3%**

reallocation
reduction equates to
\$1.3M cut

CLEARING SAND IN THE GEARS



**President's Operational
Effectiveness Collaborative
(POEC)**



**Campus Climate Surveys &
Critical Learning Collectives**

STRATEGIC PLANNING TOWARD CSUCI FOR 2030+

- 
- **High-Impact, Experiential Learning Opportunities**
 - **State of the Art Digital User Experience**
 - **P-20 Educational Ecosystem**
 - **Supporting Faculty as Artists, Scholars, and Teachers**

ACADEMIC MASTER PLAN

Our academic programs drive enrollment growth, improved persistence and graduation rates, and improved post-graduate outcomes.

Focus on how to best support our existing programs in direct response to meeting our region's needs.



RECONNECT AND REDISCOVER YOUR DOLPHIN PRIDE

AT CSUCI'S INAUGURAL
HOMECOMING 2024

OCT. 21-26



WWW.CSUCI.EDU/HOMECOMING



HOMECOMING@CSUCI.EDU



[@CI_HOMECOMING](https://www.instagram.com/ci_homecoming)



PRESIDENT'S AWARD FOR STUDENT INNOVATION



Eleanor Fishburn

Anthropology

PRESIDENT'S TEACHING & INNOVATION AWARD



Ruben Alarcón, Ph.D.
Professor of Biology

PRESIDENT'S STAFF AWARD FOR EXCELLENCE



Tanya Gonzalez
Director of Basic Needs

PRESIDENT'S FACULTY FELLOW, 2023-2024



Melissa Soenke, Ph.D.
Associate Professor of Psychology

PRESIDENT'S FACULTY FELLOW, 2024-2025



Ekin Pehlivan, Ph.D.
Professor of Marketing





**We look forward
to seeing you
at Islands
Kitchen for
lunch.**