



Vol. 46

IN THE LOOP

April 2024



**STAFF
COUNCIL**
CHANNEL
ISLANDS



WHAT'S IN THIS ISSUE

Upcoming WSCUC
Visit

Give & Garden
Fundraiser

Reusable Bag
Collection Drive

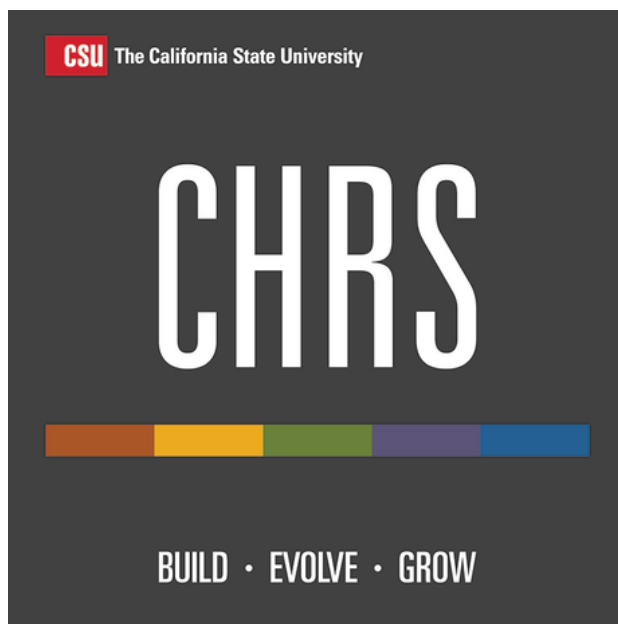
On Campus Thrift
Shop

National Month &
Days

Corporate Games

Game

TEAM SPOTLIGHT



The Common Human Resources System (CHRS) went live on November 13, 2023 and the **CI CHRS Team** worked hard to be one of the earliest campuses to successfully transition to this new system.

Staff Spotlight - **Nominate Today!**



Do you know a fellow colleague who deserves to be recognized in our next In the Loop Newsletter Staff Spotlight section? Please [click here](#) to nominate!

CHRS

TEAM



“I truly worked with the greatest group of people on this project. It was a journey and still is at times but we take pride in helping be one of first 4 CSU campuses who made this 10+ year vision become a reality and to help pave the way to continually improve CHRS moving forward.”

*Martha Ferguson
Manager of HR Information Systems*



TEAMS TO RECOGNIZE

Project Team

Melissa Bergem
Liza Bruno
Terrie Cilley
Rosario Cuevas
Diana Enos
Martha Ferguson
Donna Flores
Justine Giorgi

Christine Girardot
Manami Gutierrez
Richard Guyette
Michael Lee
Lai Leung
Josh Magana
Esmeralda Mendoza
Michele Naveau

David Ng
Wendy Olson
Jerilee Petralba
Stephany Rodriguez
Angela Stockman
Jerry Wong
Lisa Woods
Justin Yu

Sponsors and Leadership

James August
Jaqueline Connell
William DeGraffenreid
Ana Rosa Duran
Laurie Nichols
Angela Portillo
Asha Ramachandra

Additional Testers

Colleen Haws
Jessica Parker
Maria Perez
Ashley Segovia
Sharon Seravic
Maria Elena Zendejas



NATIONAL
MINORITY
HEALTH
MONTH



April is National Minority Health Month! This annual observance builds awareness about the health disparities that persist among racial and ethnic minority and American Indian/Alaska Native (AI/AN) populations and encourages everyone to take action to end these inequities. This year's theme, *Be the Source for Better Health: Improving Health Outcomes Through Our Cultures, Communities, and Connections*, is about understanding how the unique environments, cultures, histories, and circumstances (known as social determinants of health, or SDOH) of racial and ethnic minority and AI/AN populations impact their overall health.

Click [here](#) to find more information!

*Be The Source for
Better Health*



**Give &
Garden**



**STAFF
COUNCIL**

C H A N N E L
I S L A N D S

Hello **SPRING!**

Order online between

April 1 - April 30

**And plant with purpose knowing your participation
supports CI Staff Council!**



Reusable Bag Collection Drive

April 1 - April 30, 2024

These donated bags will be reused by Basic Needs at the Dolphin Food Pantry and Farmers Markets.

Types of bags to donate:

Canvas
Cloth
Jute
Mesh

Collection bin locations:

Broome Library
Student Union
Dolphin Pantry
Cove Bookstore



Collaboration event by CSUCI Sustainability and Basic Needs

Fun Fact: Did you know our CI mascot ,Ekho, was named after the echolocation abilities that dolphins possess and to represent the students' voice.



NATIONAL DOLPHIN DAY APRIL 14

**LEARN HOW YOU CAN HELP PROTECT THEIR OCEAN HABITATS.
TOGETHER, LET'S MAKE A SPLASH FOR DOLPHIN
CONSERVATION! #NATIONALDOLPHINDAY**

DOLPHIN FACTS: EVERYTHING YOU NEED TO KNOW



**SIGN UPS STILL
OPEN FOR...**

APRIL 21 - MINI GOLF
APRIL 27 - BEACH VOLLEYBALL
APRIL 29 - SPEED SCRABBLE
APRIL 30 - SPADES
MAY 1 - DOMINOES
MAY 4 - TUG-O-WAR

**SEE MORE DETAILS ON
THE STAFF COUNCIL SITE**



**SAVE
THE
PLANET**

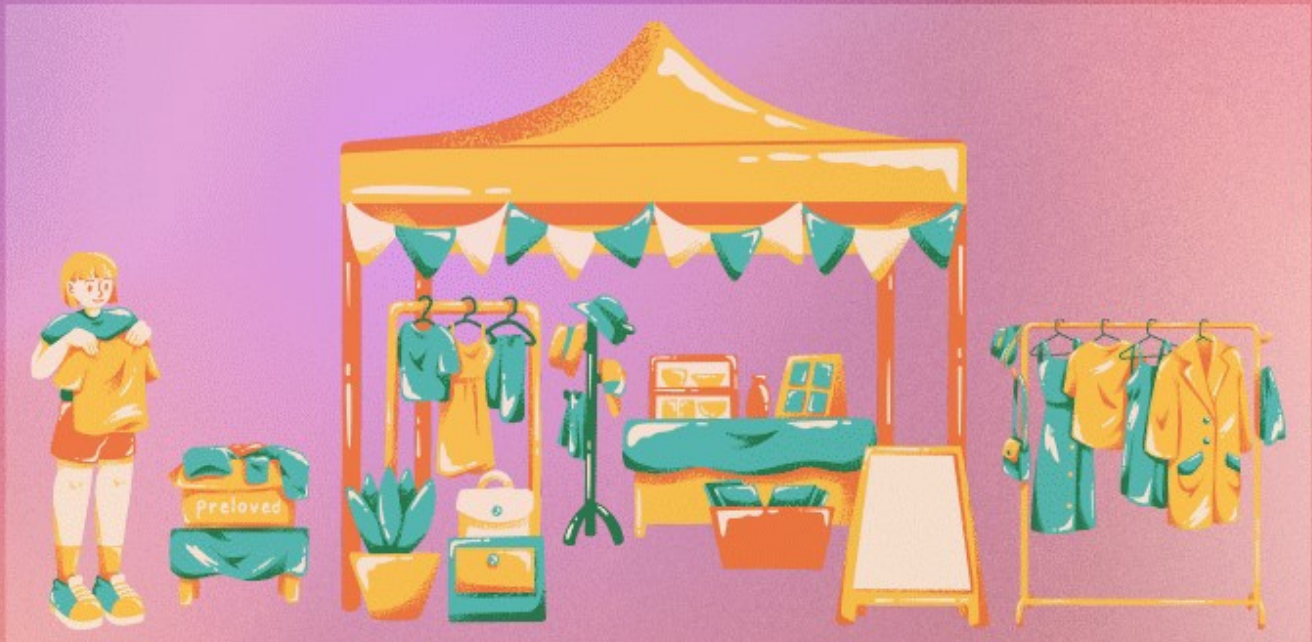
April 1 - Earth Month Begins!
April 22 - Earth Day - Take Action!
April 26 - Arbor Day - Plant a Tree!



Basic Needs Presents:

spring thrift shop

CLOTHES, CRAFTS, AND SNACKS!



Date: Monday, April 22, 2024

Time: 2 PM - 4 PM

Location: Central Mall East

*Deadline for vendors to apply: April 15, 2024.
Email Basicneeds@csuci.edu with any questions.

Interested in
selling? Apply
here!*



The University encourages persons with disabilities to participate in its programs and activities. If you anticipate needing any type of accommodation, or have questions about the physical access provided, please contact Disability Accommodations and Support Services at (805) 437-3331 or accommodations@csuci.edu as soon as possible, but no later than 7 business days prior to the event.



JOIN US FOR A

FUNDRAISER

Enjoy fantastic food & help raise money \$\$ for our student events. 10% of sales will benefit:



APRIL 23, 2024

11 a.m. to 8 p.m.

Please mention ChiLFASA when ordering or picking up your phone order.

BLVD BRGR CO.



**2145 Ventura Blvd
Camarillo, CA**

<https://www.blvdbrgr.com/>

QUESTIONS, EMAIL US AT CHILFASAMEMBERSHIP@CSUCI.EDU
TAG US ON INSTAGRAM @CHILFASA



Thank you!



Thank You

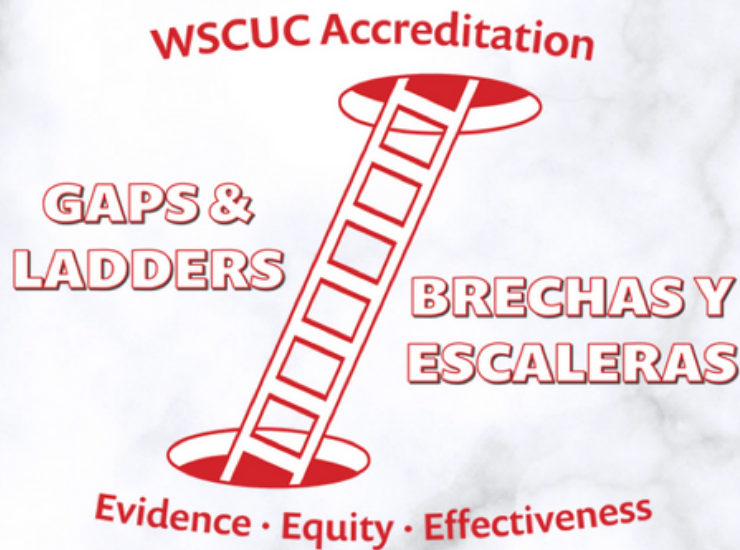


To CI Administrative Staff
WEDNESDAY, APRIL 24 IS
ADMINISTRATIVE
PROFESSIONALS DAY

**Administrative Professionals Day
recognizes and celebrates the work of
administrative assistants and other
office professionals for their
contributions to the workplace.**



**Our Visit is
4/24–4/26!**



What is WSCUC?

The Western Senior College and University Commission (WSCUC), formerly known as “WASC,” is the accrediting agency that aids institutions in developing and sustaining effective educational programs, while assuring the community that the accredited institution has met the high standards of quality and effectiveness.

What is TPR?

Thematic Pathway for Reaffirmation (TPR) is a streamlined, alternate pathway for reaffirmation for eligible institutions that demonstrate consistent evidence of a healthy fiscal condition, strong student achievement indicators, and sustained quality performance.

Can I learn more about the CSUCI’s reaffirmation process?

Visit this link: <https://www.csuci.edu/accreditation/>

This website is continuously being updated - visit frequently for new additions such as meeting notes, reports, and more.

Questions?

Contact: Edna Davoudi (edna.davoudi@csuci.edu)

Office email: accreditation@csuci.edu

In-Person: Bell Tower West Room 2188

Please email your answers to
ci.staffcouncil@csuci.edu

F	L	N	G	O	G	E	Y	J	I	C	Q	B	M	W
S	K	A	I	J	Y	E	B	C	D	P	E	I	P	N
V	W	L	E	H	W	R	S	R	T	P	X	R	J	Y
V	M	Q	A	U	P	T	D	P	A	E	K	D	O	T
D	Z	E	S	P	I	L	C	E	R	I	S	E	B	L
W	M	D	T	D	B	I	O	U	F	I	N	N	Z	K
V	P	K	E	G	Y	P	V	D	I	F	N	B	U	A
Y	L	F	R	E	T	T	U	B	J	M	O	G	O	S
A	D	M	I	N	I	S	T	R	A	T	I	V	E	W
N	P	D	C	E	Y	P	J	H	G	Q	K	Y	J	I
O	F	L	A	J	N	A	M	Y	R	R	R	L	H	E
O	B	R	A	I	N	R	O	F	I	L	A	C	Y	O
Y	T	E	Y	O	U	K	T	I	D	K	N	Q	V	X
H	E	U	E	A	K	L	K	L	I	H	Y	Y	S	P
E	O	Q	W	A	T	E	R	F	A	L	L	S	T	U

Spring Word Search