



Office of the President

Administrative & Operational Support * Community & Government Relations
Institutional Research, Planning and Effectiveness



MISSION

As stewards of the *CI Mission*, the Office of the President contributes to the exceptional educational experience for all students and ***supports the President*** through a high level of ***service*** and ***collaboration*** within and beyond the campus for all community members.

VISION

The Office of the President is known for its ***exceptional service, innovative practices*** and ***facilitating solutions*** for a diverse community.

VALUES

Professional Excellence Growth, Optimism, Inclusiveness, Service and



Office of the President Strategic Initiatives

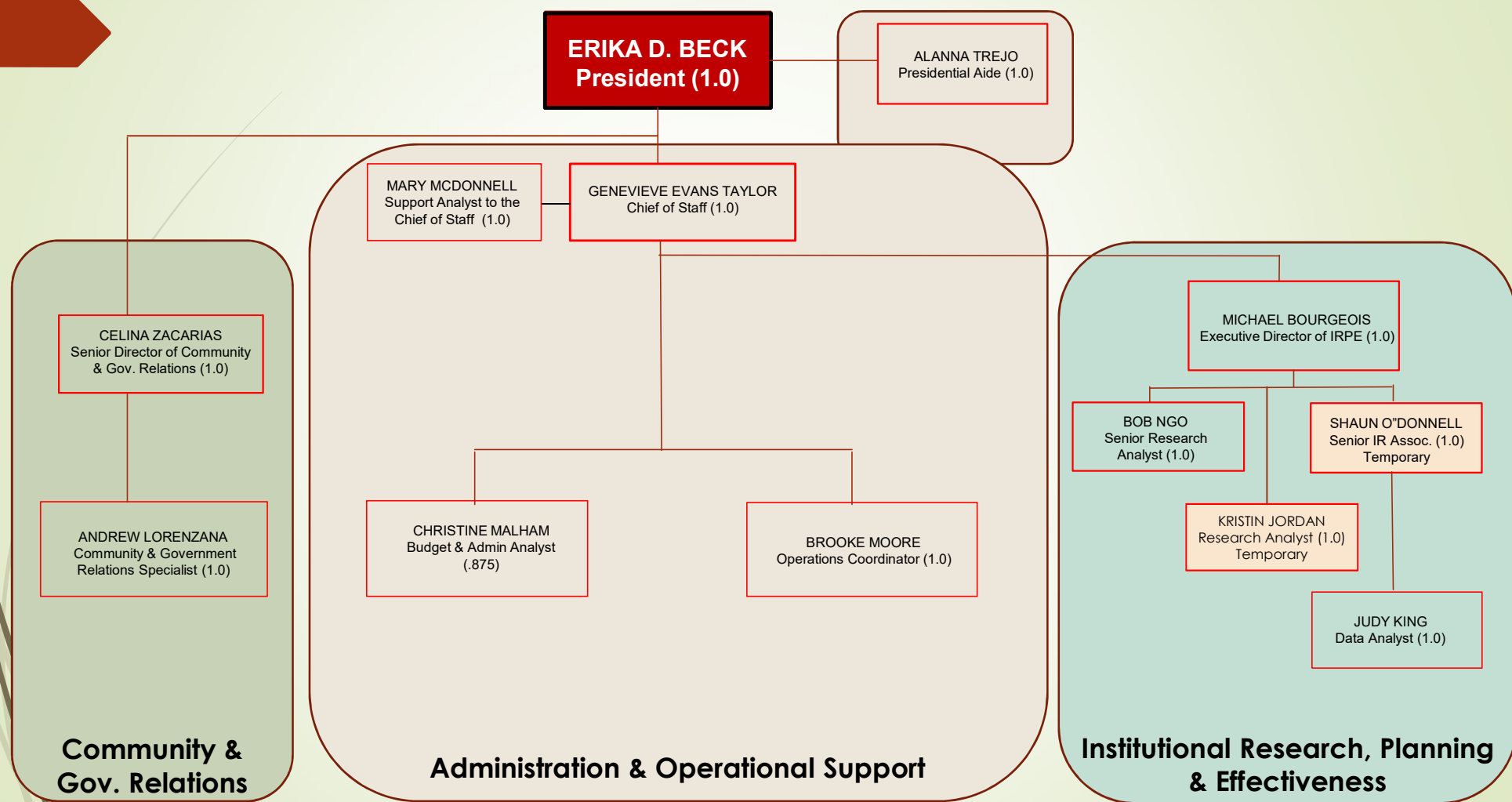
- **Support the President** in her vision, goals and values (3c, 3d)
- Ensure **compliance** of local, CSU, state, and federal requirements, rules and regulations governing higher education institutions (3d)
- Support and expand **external relations** (3c, 3d)
- Take an active role in the creation of the ideal **campus culture** (3c, 3d)
- Serve as a model of CI's commitment to **excellence** by providing a service-oriented, professional and confidential environment which serves the campus community and the public (3c, 3d)
- Lead the campus in creating a culture of **assessment, evidence-based decision-making** and the responsible use of data (3a, 3b, 3d)

Office of the President

2017/2018 Budget

	Salary (without benefits)	Operating	Total	FTE Staff
Office of the President	\$963,940	\$247,342	\$1,211,282	6.875
IRPE	\$314,150	\$47,172	\$361,322	3
TOTAL	\$1,278,090	\$294,514	\$1,572,604	9.875

IRPE – CSU Graduation Initiative 2025 Temporary Funding	Total
Two Temporary Positions	2.00
Salaries (incl. benefits)	235,426
Operating & Maintenance	90,000
TOTAL	\$325,426





Administrative & Operational Support

Purpose: To provide **administrative and operational support** to the President and the Division of the Office of the President.

- **Support the President** in her vision, goals and values (3c, 3d)
- **Take an active role in the creation of the ideal campus culture** (3c, 3d)
- **Ensure compliance of local, CSU, state, and federal requirements, rules and regulations governing higher education institutions** (3d)
- Support and expand *external relations* (3c, 3d)
- **Serve as a model of CI's commitment to excellence by providing a service oriented, professional and confidential environment which serves the campus community and the public** (3c, 3d)
- Lead the campus in creating a culture of *assessment*, evidence-based decision-making and the responsible use of data (3a, 3b, 3d)

Administrative & Operational Support



Community & Government Relations

Purpose: To advance CI's positive presence and goodwill at all levels by planning, directing, and implementing a comprehensive proactive program of community and government relations. To establish and maintain ***strong relationships with local elected officials, legislators*** in Sacramento, and ***U.S. Congressional representatives*** in Washington D.C. and their staffs to communicate positions on issues and ***obtain support for resources*** on behalf of the campus.

- **Support the President in her vision, goals and values (3c, 3d)**
- Take an active role in the creation of the ideal *campus culture* (3c, 3d)
- **Ensure compliance of local, CSU, state, and federal requirements, rules and regulations governing higher education institutions (3d)**
- **Support and expand external relations (3c, 3d)**
- Serve as a model of CI's commitment to excellence by providing a service oriented, professional and confidential environment which serves the campus community and the public (3c, 3d)
- Lead the campus in creating a culture of *assessment*, evidence-based decision-making and the responsible use of data (3a, 3b, 3d)

Community & Government Relations

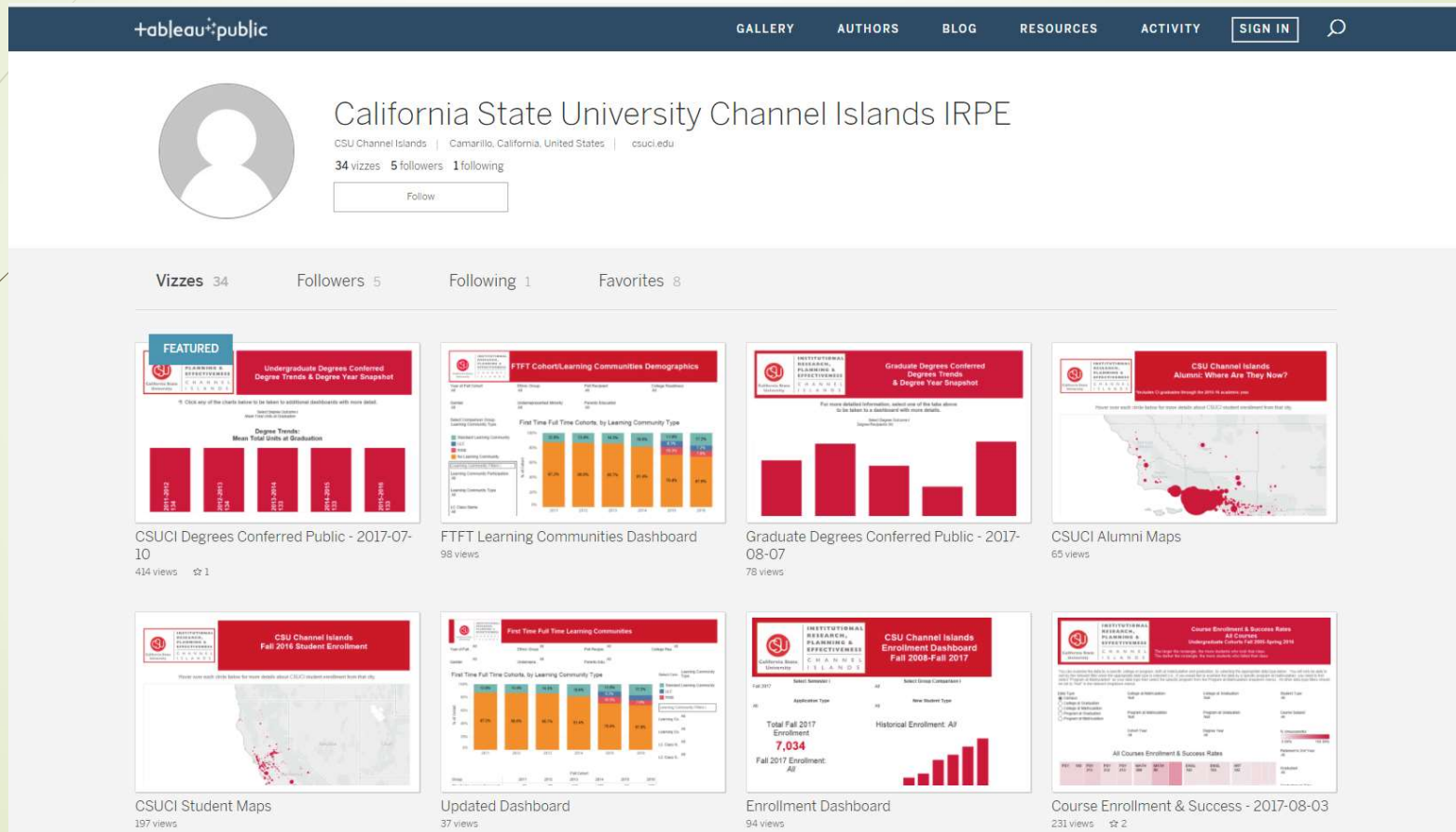


Institutional Research, Planning & Effectiveness

Purpose: IRPE develops and maintains institutional data and analytical studies to support the strategic plan, to **measure improvement**, to demonstrate **accountability** and to cultivate a culture of **evidence-based decision-making**.

- **Support the President in her vision, goals and values (3c, 3d)**
 - Take an active role in the creation of the ideal *campus culture* (3c, 3d)
- **Ensure compliance of local, CSU, state, and federal requirements, rules and regulations governing higher education institutions (3d)**
 - Support and expand *external relations* (3c, 3d)
 - Serve as a model of CI's commitment to *excellence* by providing a service-oriented, professional and confidential environment which serves the campus community and the public (3c, 3d)
- **Lead the campus in creating a culture of assessment, evidence-based decision-making and the responsible use of data (3a, 3b, 3d)**

Institutional Research, Planning & Effectiveness



- Reallocations
 - Future: IRPE permanently fund two positions, with one being partially funded with current student assistant salary allocation.
- Administrative Efficiencies
 - Moved two positions to AA and one to UA. We've absorbed duties.
 - Installation of Tableau
 - Calendar audits
 - Lean Six Sigma training
- Accountability
 - Review Strategic Initiatives
 - Annual Retreats

IT TAKES A
Village



QUESTIONS?

