



Division of Business and Financial Affairs

Broome Library 2325
December 5, 2018



Topics for Discussion

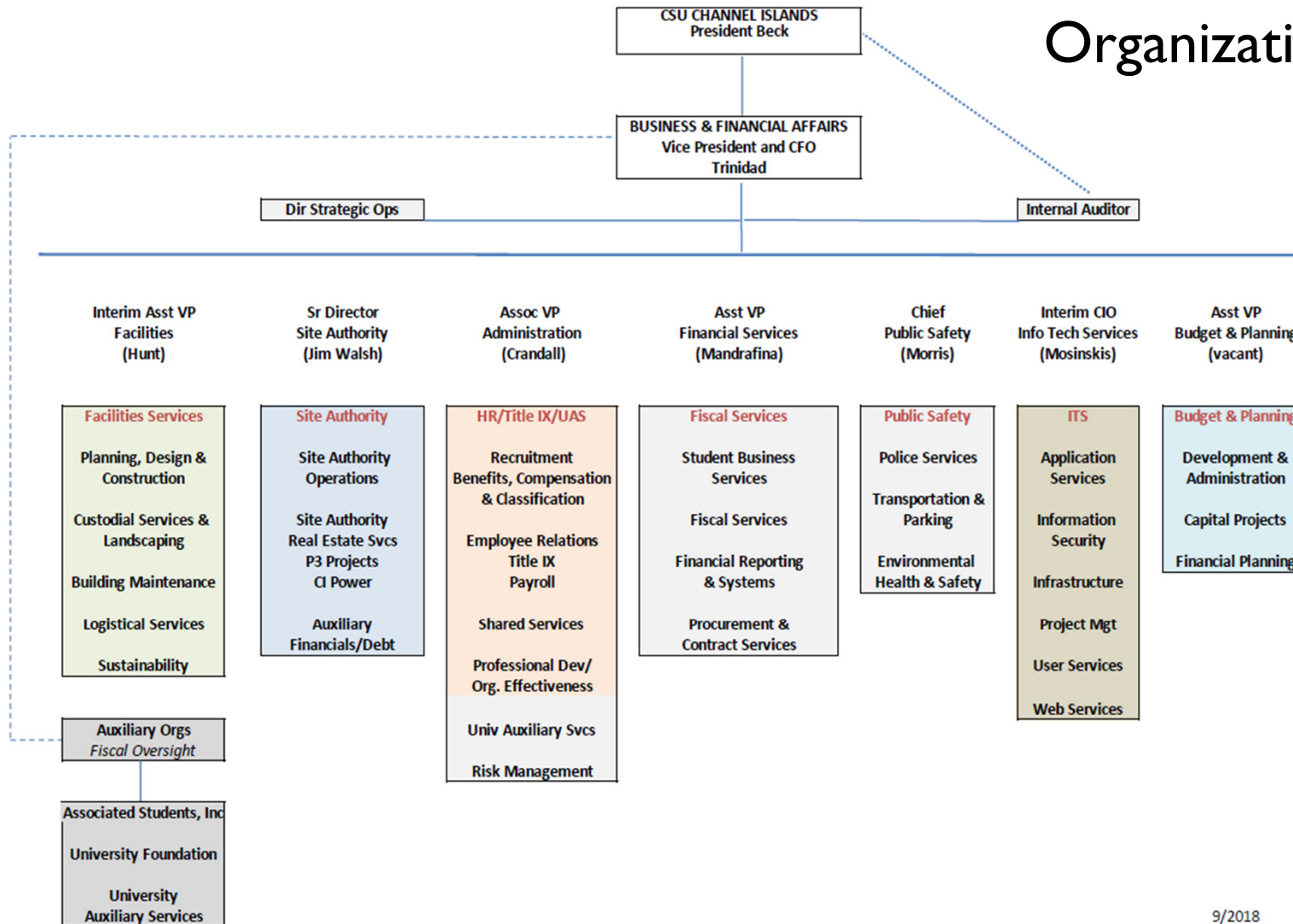
- I. Division Overview
- II. CSUCI Site Authority (Spotlight)
- III. Facilities Services (Spotlight)



Division Overview

- *Organizational Chart*
- *Division Strategy Map*
- *Numbers: Staff, Budgets and Expenditures*
- *Administrative Efficiencies*

Business & Financial Affairs Organizational Chart



CSUCI 2018-2023 Strategic Initiatives

1. Educational Excellence
2. Student Success
3. Inclusive Excellence
4. Capacity and Sustainability

Business & Financial Affairs Strategy Map 2018

Mission We transform the delivery of quality services to support the campus through continuous improvement	Vision We are the recognized leader for the delivery of outstanding services
Values: Teamwork • Diversity • Integrity • Respect • Excellence • Collaboration • Fun	



Business & Financial Affairs Staff Numbers by Unit

State-Supported Staff

Unit	Full Time
Vice President's Office	6.0
Financial Services	28.0
Administration	24.0
Facilities Services	105.7
Public Safety	26.5
Information Technology	41.0
TOTAL	231.2

Self-Supported Staff

Unit	Full Time (perm and temp)	Part time (includes students)
Transportation & Parking Svcs	8.0	
University Auxiliary Services	45.0	111
Site Authority Authority	4.8	
TOTAL	57.8	111

Total Staff: 289 full-time; 111 part-time

Business & Financial Affairs Budgets by Unit

State-Supported Programs

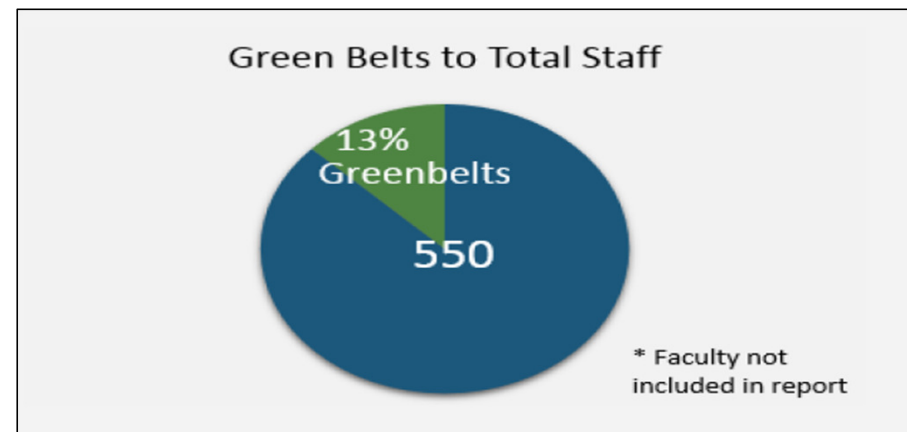
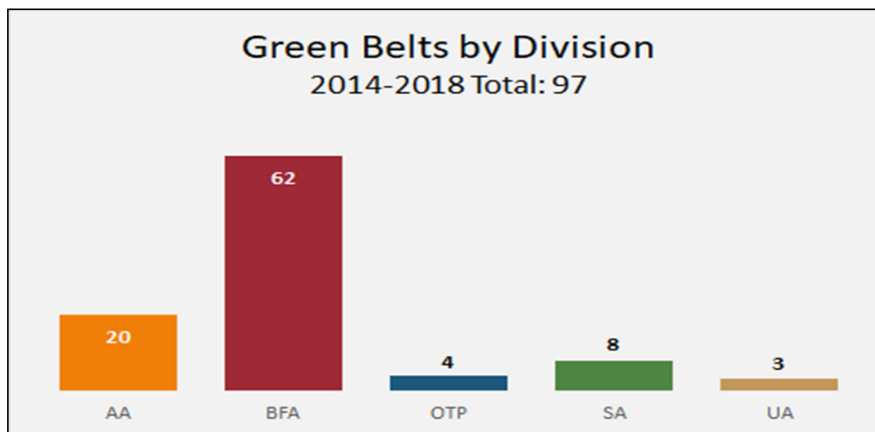
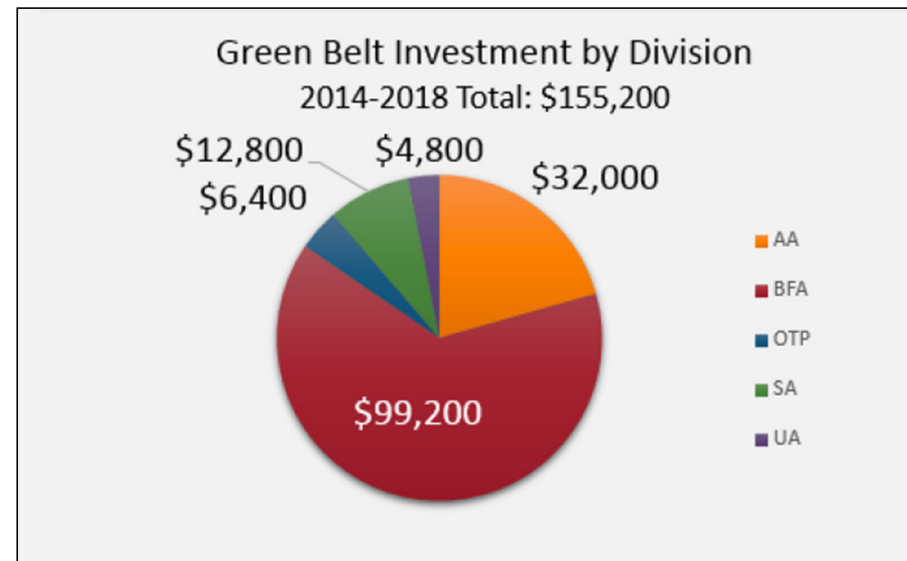
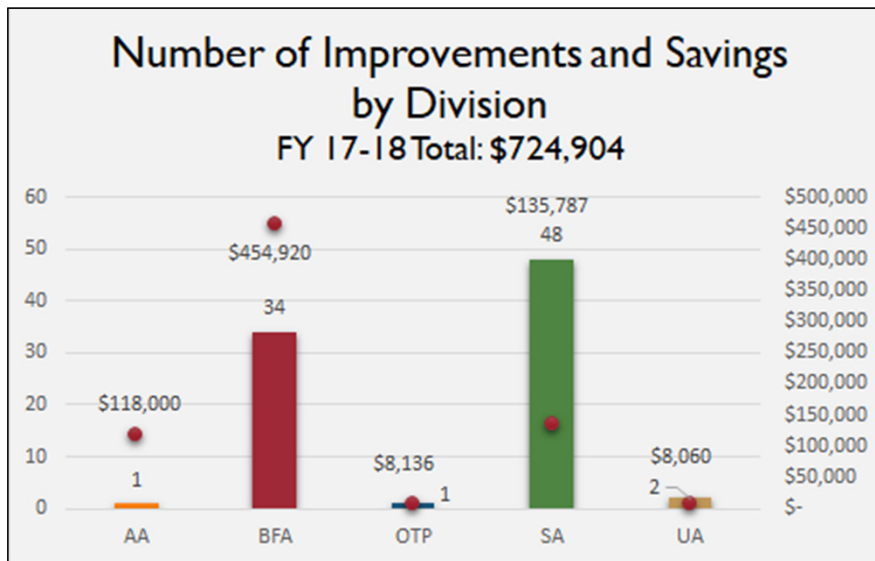
Unit	Budget
Vice President's Office	\$1,618,390
Financial Services	\$1,755,060
Administration	\$1,756,979
Facilities Services	\$6,157,603
Public Safety	\$2,323,050
Information Technology	\$5,362,157
TOTAL	\$18,973,239

Self-Supported Programs

Unit	Budget
Transportation & Parking Svcs	\$2,495,841
University Auxiliary Services	\$10,303,780
Site Authority Authority	\$11,420,519
TOTAL	\$ 24,220,140

Organizational Effectiveness Program

Campus Process Improvement Efficiencies





Spotlight: CSUCI Site Authority

James Walsh

Senior Director, CSUCI Site Authority

Lori Lang

Site Authority Housing Manager

Stephanie Bracamontes

Site Authority Fiscal Officer

What is the Site Authority?

- Established by California State Legislature - Senate Bill 1923 (1998).
- Created to provide financing and support for transition to CSUCI.
- SA Board has reps from CSU Trustees, Ventura County, and one VC city.
- SA developed Specific Reuse Plan in 2000 to guide its growth.
- Creation of SA laid the groundwork for the creation of income generating ventures.

Site Authority Budget

Site Authority Staff:
FTE - 2.80; represented - 2.0

Site Authority Operating Budget	
Salaries & Benefits	456,000
Faculty & Staff UGlen Housing Rental Program	456,920
General Operations	2,387,875
CI Power Operations	2,399,959
Debt Service	5,719,765
Total	\$11,420,519

University Glen Community Management

Home Sales: 88 for rent townhomes were sold to pay off debt service.

Landscape and maintenance services provided by CSUCI Facilities Services

University Glen website. Updated weekly to keep current information only. (Budget transparency)

Conduct monthly Homeowners Advisory Council meetings and University Glen Community Advisory Group meetings.



Site Authority Activities

32 Acre Development (P3): 598 new units beginning in 2019
170 age-restricted units, 310 apartments, 118 for-sale residences

CI Power: Site Authority has oversight of CI Power Plant, generating power and revenue for the campus. Plant powered by gas turbine jet engine. Turbine exhaust produces steam for campus heating and cooling.

Tracking our success

- Total number of invoices processed: reduce process time
- Home sales: reduce total transaction time
- Homeowner feedback through CAM Manager survey



Spotlight: Facilities Services

Thomas Hunt, P.E. CEM CFP

Interim Assistant Vice President for Facilities Services

Facilities Services core function is to provide a clean, safe, functioning and aesthetically pleasing campus environment in support of the University's mission.

- ***Operations and Maintenance:*** responsible for maintenance and capital renewal of facilities, utilities, utility infrastructure, and roads in a sustainable manner.
- ***Planning, Design and Construction:*** plan for the campus' growth through the planning, design and construction of buildings and infrastructure.
- ***Logistical Services:*** responsible for work center, locksmith, vehicle fleet, mail, shipping/receiving, warehousing, asset management, and campus moves.
- ***Grounds and Custodial:*** responsible for campus landscaping and cleaning of campus facilities.

Staff Numbers by Unit

State-Supported Staff

Facilities Services Departments	Full Time Employees
Administration	4
Operations & Maintenance	25
Logistical Services	11
Planning, Design & Construction	2
Grounds and Custodial	41
Auxiliaries/HRE/temp funding*	22.7
<i>TOTAL</i>	105.7

Budgets by Unit

State-Supported Programs

Facilities Services Departments	Budget
Administration	391,371
Capital Projects	97,367
Operations	3,156,252
Facility Services	1,223,761
Grounds	933,767
Planning Design & Construction	178,595
Utility Support	510,109
Logistical Services	282,167
<i>Reimbursed Activities</i>	<i>(615,786)</i>
<i>TOTAL</i>	\$6,157,603



Thank you