



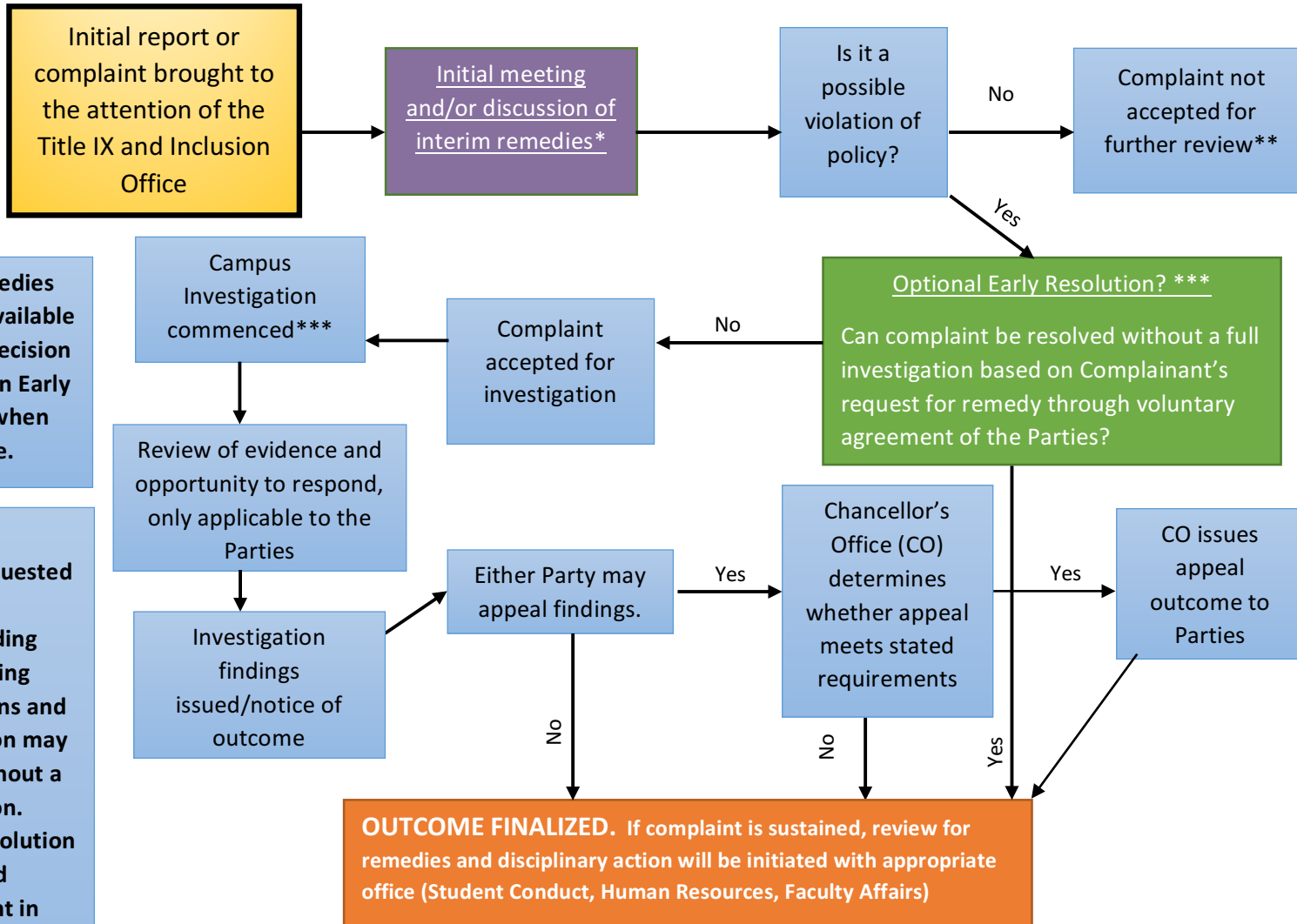
Campus Investigation Procedures: Executive Orders 1096/97****
Complaints of Discrimination, Harassment, Retaliation, Sexual Misconduct, Dating or Domestic Violence and Stalking

The Parties
Complainant: Person reported to have experienced a violation of the policy
Respondent: Person accused of violating the policy

www.csuci.edu/titleix/
<https://www.csuci.edu/inclusion>

To file a report go to:

https://cm.maxient.com/reportingform.php?CSUChannelIslands&layout_id=1



***Interim remedies will be made available regardless of decision to participate in Early Resolution, when applicable.**

*****In Early Resolution, requested remedies and response including academic or living accommodations and corrective action may be granted without a full investigation. Note: Early Resolution can be explored during any point in the investigative process before an outcome is issued to the Parties.**

****Complaint deemed outside of the scope of the executive order. If more information is needed, the Title IX and Inclusion Office will inform the Complainant that if the additional necessary information is provided, the case will be reviewed again for possible acceptance.**

Both Parties may elect at any time to have an Advisor present during all parts of the process, please see definition for advisor.
****This process does not take the place of an independent investigation that may, under some circumstances, be commenced by law enforcement regarding the same incident. Further details may be found on:
<https://www.calstate.edu/eo/EO-1096-rev-10-5-16.pdf>
<https://www.calstate.edu/eo/EO-1097-rev-10-5-16.pdf>