



Spring Division Meeting

BUSINESS & FINANCIAL AFFAIRS

LINDERO HALL COURTYARD

WEDNESDAY, MAY 11, 10:30 A.M. TO NOON



California State
University

Division of
**BUSINESS &
FINANCIAL
AFFAIRS**

C H A N N E L
I S L A N D S



WELCOME

Renee Fuentes, (EMCEE)
Title IX Administrative
Specialist



California State
University

Division of
**BUSINESS &
FINANCIAL
AFFAIRS**

C H A N N E L
I S L A N D S



AGENDA

- Welcome
- New Employees
- Icebreaker
- Team Activity
- Mingle Time
- Recognition
- Closing

WELCOME

Laurie Nichols

Associate Vice President for
Administrative Services and HRO

Barbara Rex

Associate Vice President for Budget &
Planning and Interim CFO



Division of
**BUSINESS &
FINANCIAL
AFFAIRS**

C H A N N E L
I S L A N D S





**California State
University**

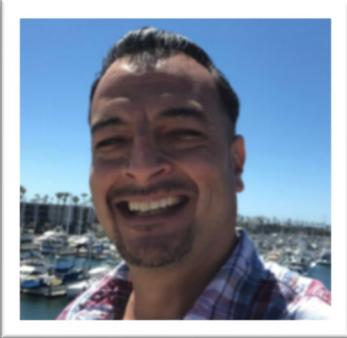
C H A N N E L
I S L A N D S

New Employees



New Employees

Financial Services



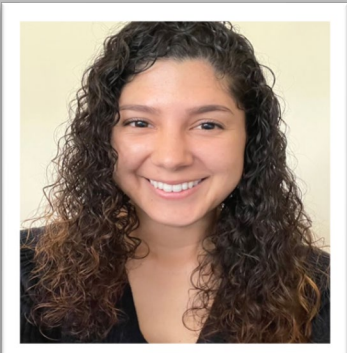
Gabriel Najar

Buyer II/Contract Specialist



Minna Chang

Auxiliary Finance Manager



Makayla Matheu

Procurement/Accounts Payable Coordinator



New Employees



Facilities

Michael Harrison
Senior Manager of Trades

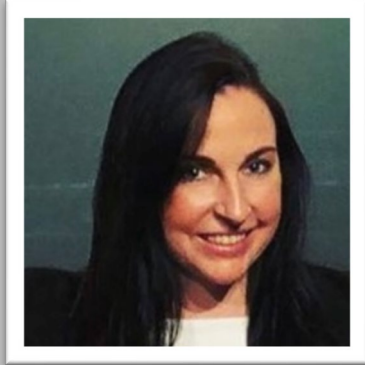


ITS

Lance Grange
Director of User Services



New Employees



VPBFA Office

Lindsay Billett
Risk Analyst



Site Authority

Christina Sotelo
Site Authority Resource Specialist



New Employees

Public Safety



Santiago Estrada
Police Officer



Jacqueline Chavez
Covid-19 Compliance Coordinator



Fun Time

Brian Lindgren

Organizational Effectiveness Specialist
/ Trainer

Wendy Olson

Learning & Development Specialist



California State
University

Division of
**BUSINESS &
FINANCIAL
AFFAIRS**

C H A N N E L
I S L A N D S





**California State
University**

C H A N N E L
I S L A N D S

ICE BREAKER

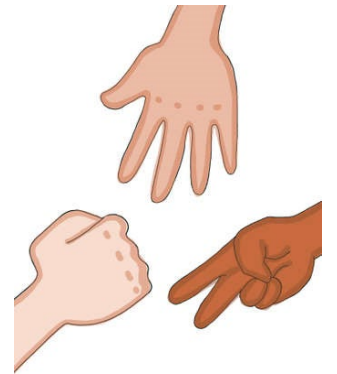


Rocks Paper Scissors Tournament!!!



Rocks Paper Scissors Tournament!!!

- Pair up
- At the signal, play one round of R,P,S
- Winner finds another winner
- Loser is now the winner's Cheering Section
- Repeat until there are 4 left





**California State
University**

C H A N N E L
I S L A N D S

TEAM ACTIVITY

A decorative floral wreath is positioned at the bottom right of the text. It features a variety of colorful flowers, including pink, purple, yellow, and blue, with green leaves and stems.

Trivia

- Groups of 4 or 5
- Work together to correctly guess the CSUCI related Trivia Questions and write them on the corresponding answer sheet
- Team with most correct WINS!



1. True or False – CSUCI is the second youngest of the 23 Cal State Universities.
2. In what year was CSUCI established?
3. What were the first CSUCI colors (3) before red and silver were chosen?
4. The campus is situated on land historically inhabited by?
5. How many reporting units does DBFA have?

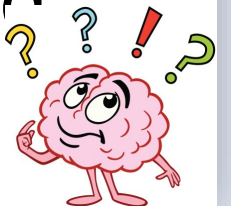


Answers

1. False – it is the youngest of all 23 campuses
2. 2002
3. Teal, Maroon and Gold
4. Chumash
5. 8 – Admin Services, Budget and Planning, Facilities, Financial Services, ITS, Internal Audit, Public Safety, VP Office



1. Name 5 of the 7 colleagues on President Yao's Executive Leadership Team
2. What Island is the CSUCI research station located on?
3. What is the name of the building where you get your questions answered regarding your key codes or key code permissions?
4. What is the name of CSUCI's mascot?
5. What year was the "Green Campus" concept proposed for CSUCI?



Answers

1. Laurie Nichols, Barbara Rex, Toni DeBoni, Celina Zacarias, Richard LeRoy, Mitch Avila, Kaia Tollefson
2. Santa Rosa
3. Ironwood Hall
4. Ekho the Dolphin
5. 1998



1. Name three of the 8 Channel Islands (excluding Santa Rosa)
2. What is the name of the building that houses transportation and parking?
3. What World War 2 movie was partially filmed at CSUCI?
4. What is the name of our interim Chief of Police?
5. What was the name of the first new building built on the CSUCI campus in 2003?



Answers

1. Anacapa, Santa Cruz, San Miguel, San Clemente, San Nicolas, Santa Catalina, Santa Barbara
2. Placer Hall
3. Pearl Harbor, 2001
4. Drake Massey
5. Aliso Hall





**California State
University**

C H A N N E L
I S L A N D S

MINGLE

TIME





**California State
University**

C H A N N E L
I S L A N D S

RECOGNITION



BFA Division Recognition Awards



Efficiency Award



Excellence Award



Collaboration & Teamwork Award
Individual & Team Awards



Committee Members

Paula Robertson, VP-BFA Office, Chair

Marina Moreno & Paula Rockenstein Financial Services*

Richard Guyette & William Nutt, Administrative Services

Michelle Dietz & Terry Tarr, Facilities Services

Ryan Garcia & Carlos Miranda, ITS

*Collen Haws** & Joyce Spencer, Public Safety*

Peter Maher, UAS

**Secretary **Communications Chair*



Spring 2022 Recognition Award Winners



Te Teamwork	Di Diversity	In Integrity
Re Respect	Ex Excellence	Co Collaboration


California State University

Division of
BUSINESS & FINANCIAL AFFAIRS
CHANNEL ISLANDS

Efficiency Award Winners

❖ *Pedro Rivas, ITS*

❖ *Marissa Zossimo, EH&S*



Excellence Award Winners

- ❖ *Dan Gerrard, Facilities Services*
- ❖ *Karly Ibrahim, Public Safety*
- ❖ *Jessica Parker, Human Resources*
- ❖ *Joyce Spencer, EH&S*
- ❖ *Terry Tarr, PD&C*
- ❖ *Dale Velador, ITS*



Collaboration & Teamwork Award Winners

Individual

- ❖ *Roxane Beigel-Coryell, Facilities Services*
- ❖ *Michael Long, ITS*



Collaboration & Teamwork Award Winners

Team

- ❖ *Custodial Crew*
- ❖ *Landscape Services Staff*
- ❖ *Human Resources Staff*





**California State
University**

C H A N N E L
I S L A N D S

PRESENTATION





**California State
University**

C H A N N E L
I S L A N D S

CLOSING





Thank You
for Joining Us

